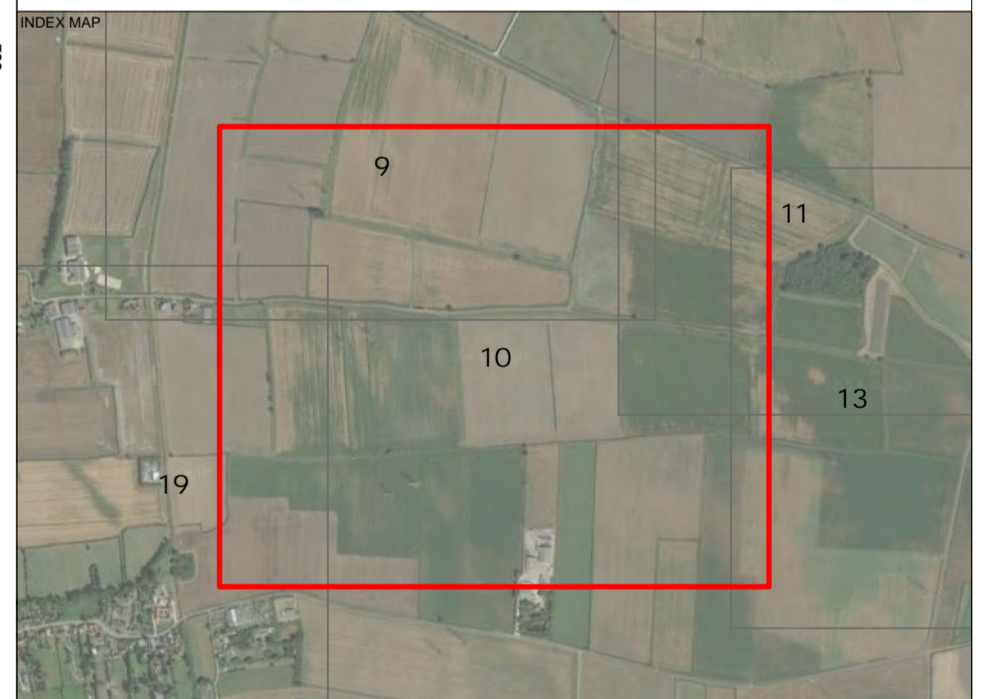




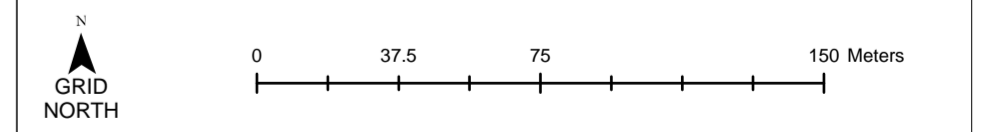
- KEY**
- Category A Tree - High quality (Retention highly desirable)
  - Category A - Hedgerow, Group, Woodland - High quality (Retention highly desirable)
  - Category B Tree - Moderate quality (Retention desirable)
  - Category B - Hedgerow, Group, Woodland - Moderate quality (Retention desirable)
  - Category C Tree - Low quality (May be retained but should not constrain development)
  - Category C - Hedgerow, Group, Woodland - Low quality (May be retained but should not constrain development)
  - Category U Tree - Very low quality (Mostly unsuitable for retention)
  - Category U - Hedgerow, Group, Woodland - Very low quality (Mostly unsuitable for retention)
  - Root Protection Area (RPA) - Layout design tool indicating the minimum area around a tree deemed to contain sufficient roots and soil volume to maintain the tree's viability
  - Shrub mass/offsite tree/out of scope (OOS)
  - Tree/Group/Hedgerow not on topographical survey. Location given is an estimate
  - Ancient Tree / Woodland or Veteran Trees
  - Ancient tree/woodland or Veteran tree: Important trees that require special consideration
  - Ancient tree/woodland or Veteran tree buffer: As per published standing advice from Natural England and the Forestry Commission
  - Statutory Protection
  - Tree Preservation Order (TPO): Trees under statutory protection. No tree works to be undertaken without specific consent or by relevant exception. The site may be within a designated Conservation Area which restricts tree works. Please see attached advice and guidance.
  - Existing gateway or field access
  - Target Note

Label	Description
OOS 001	Offsite ash, 8m tall
OOS 002	Offsite ash, 9m tall
OOS 003	Offsite ash, 9m tall
OOS 004	Offsite ash, 9m tall
OOS 005	Offsite ash, 8m tall
OOS 006	Collapsed dead tree 12m into site
OOS 007	Scrub mature ash - 7m tall
OOS 008	Offsite railway field maple, 3m tall
OOS 009	Heavily decayed ash stump, felled @ 1.5m, approx. dia. 850mm, small crown formed by young re-gen, not posted on top
OOS 010	Young dead stem
OOS 011	Bramble, hawthorn felled out of-escape hedging
OOS 012	Bramble, hawthorn, blackthorn felled out of-escape hedging
OOS 013	Saplings with tree protection measures
OOS 014	Saplings with tree protection measures
OOS 015	Sub 75mm predominantly blackthorn
OOS 016	Sub 75mm basal regrowth: crack willow, common ash, field maple, elder
OOS 017	Sub 75mm basal regrowth: crack willow, common ash, field maple, elder, hawthorn
OOS 018	Off-site adjacent to railway side, self established young thorn & maple
OOS 019	Off-site adjacent to railway side, self established young thorn & dogrose
OOS 020	Scrub - willow, laurel, sapling hawthorn
OOS 021	Area of scrub - elder, bramble, sapling hawthorn mix - 2m tall

Label	Description
TN1	Public survey access
TN2	Oak trees within the hedgerow are set back from site redline beyond RPAs
TN3	Oak trees within the hedgerow are set back from site redline beyond RPAs
TN4	Existing compacted earth and stone track



Note: The original of this drawing was produced in colour – a monochrome copy should not be relied upon. This drawing should be interpreted with reference to the accompanying tree schedule and written advice



PROJECT TITLE	Steeple (5343)		
DRAWING TITLE	Tree Survey Plan		
SCALE	Scale: 1:2,000 @ A1	DRAWING NUMBER	BHA_5343_01
DRAWN BY	APPROVED BY	REVISION	SHEET
TH	TH	10 of 19	DATE 14/05/2024
COORDINATE SYSTEM / DATUM British National Grid / Newlyn Datum (AOD)			
CLIENT	RES		
CREDITS	Crown copyright. All rights reserved. 2024 Ordnance Licence number 0100641064. Ordnance Survey Copyright Licence number 100054267.		

**Barton Hyett Associates**  
Arboricultural Consultants

Tel: 01386 576161  
Address: Office 5E, Deer Park Business Centre,  
Eckington, Peshore, Worcestershire, WR10 3DN

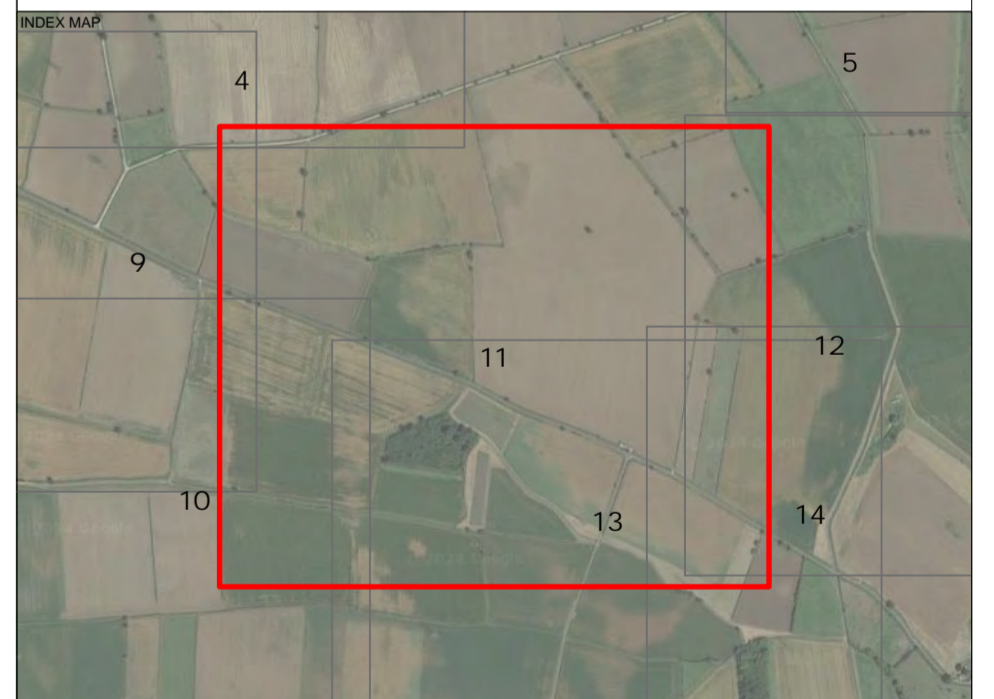




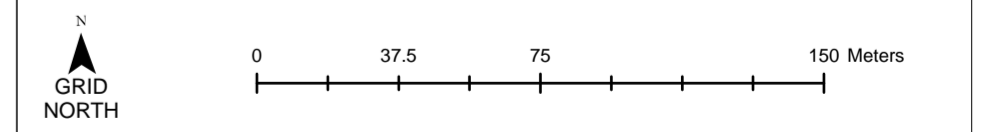
- KEY**
- Category A Tree - High quality (Retention highly desirable)
  - Category A - Hedgerow, Group, Woodland - High quality (Retention highly desirable)
  - Category B Tree - Moderate quality (Retention desirable)
  - Category B - Hedgerow, Group, Woodland - Moderate quality (Retention desirable)
  - Category C Tree - Low quality (May be retained but should not constrain development)
  - Category C - Hedgerow, Group, Woodland - Low quality (May be retained but should not constrain development)
  - Category U Tree - Very low quality (Mostly unsuitable for retention)
  - Category U - Hedgerow, Group, Woodland - Very low quality (Mostly unsuitable for retention)
  - Root Protection Area (RPA) - Layout design tool indicating the minimum area around a tree deemed to contain sufficient roots and soil volume to maintain the tree's viability
  - Shrub mass/offsite tree/out of scope (OOS)
  - Tree/Group/Hedgerow not on topographical survey. Location given is an estimate
  - Ancient Tree / Woodland or Veteran Trees**
  - Ancient tree/woodland or Veteran tree: Important trees that require special consideration
  - Ancient tree/woodland or Veteran tree buffer: As per published standing advice from Natural England and the Forestry Commission
  - Statutory Protection**
  - Tree Preservation Order (TPO): Trees under statutory protection. No tree works to be undertaken without specific consent or by relevant exception. The site may be within a designated Conservation Area which restricts tree works. Please see attached advice and guidance.
  - Existing gateway or field access
  - Target Note

Label	Description
OOS 001	Offsite ash, 8m tall
OOS 002	Offsite ash, 9m tall
OOS 003	Offsite ash, 9m tall
OOS 004	Offsite ash, 9m tall
OOS 005	Offsite ash, 8m tall
OOS 006	Collapsed dead tree 12m into site
OOS 007	Small mature ash - 7m tall
OOS 008	Offsite railway field maple, 3m tall
OOS 009	Heavily decayed ash stump, felled @ 1.5m, approx. dia. 850mm, small crown formed by young re-gen, not posted on top
OOS 010	Young dead stem
OOS 011	Bramble, Hawthorn felled out-of-scope hedging
OOS 012	Bramble, Hawthorn, Blackthorn felled out-of-scope hedging
OOS 013	Saplings with tree protection measures.
OOS 014	Saplings with tree protection measures.
OOS 015	Sub 75mm predominantly blackthorn
OOS 016	Sub 75mm basal regrowth: crack willow, common ash, field maple, elder
OOS 017	Sub 75mm basal regrowth: crack willow, common ash, field maple, elder, Hawthorn
OOS 018	Off-site adjacent to railway side, self established young thorn & maple
OOS 019	Off-site adjacent to railway side, self established young thorn & dogrose
OOS 020	Small - willow, laurel, sapling hawthorn
OOS 021	Area of scrub - elder, bramble, sapling hawthorn max - 2m tall

Label	Description
TN1	Public survey access
TN2	Oak trees within the hedgerow are set back from site redline beyond RPAs
TN3	Oak trees within the hedgerow are set back from site redline beyond RPAs
TN4	Existing compacted earth and stone track



Note: The original of this drawing was produced in colour – a monochrome copy should not be relied upon. This drawing should be interpreted with reference to the accompanying tree schedule and written advice



PROJECT TITLE		Steeple (5343)	
DRAWING TITLE		Tree Survey Plan	
SCALE	Scale: 1:2,000 @ A1	DRAWING NUMBER	BHA_5343_01
DRAWN BY	TS	APPROVED BY	TH
REVISION	11 of 19	DATE	14/05/2024
COORDINATE SYSTEM / DATUM British National Grid / Newlyn Datum (AOD)			
CLIENT RES			
CREDITS Crown copyright. All rights reserved. 2104 Ordnance Licence number 010061064. Ordnance Survey Copyright Licence number 100054267.			

**Barton Hyett Associates**  
Arboricultural Consultants

Tel: 01386 576161  
Address: Office 5E, Deer Park Business Centre,  
Eckington, Peshore, Worcestershire, WR10 3DN

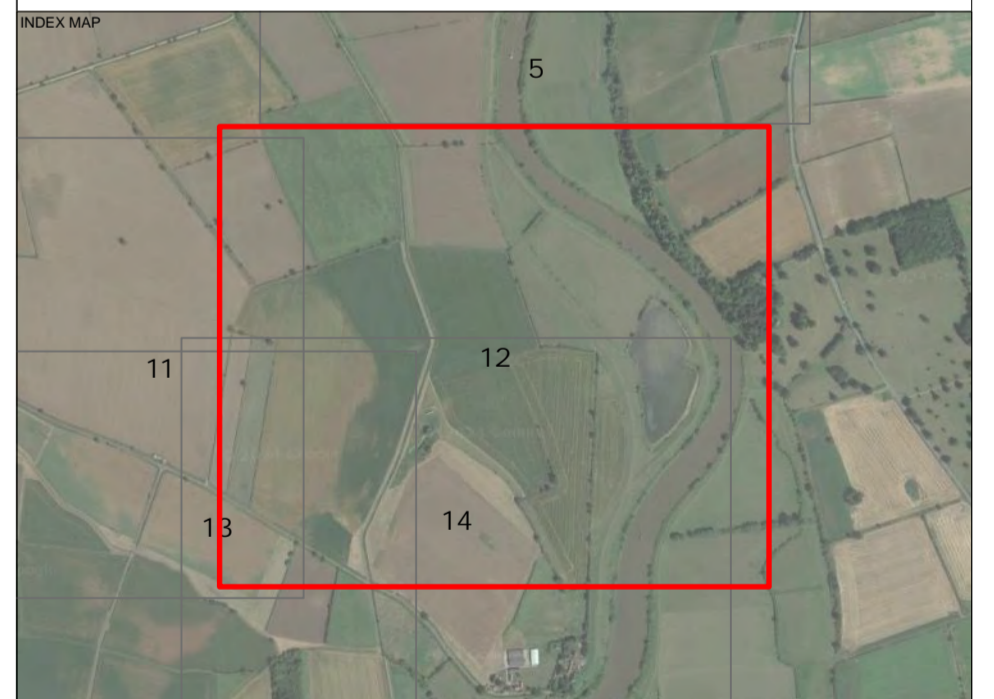




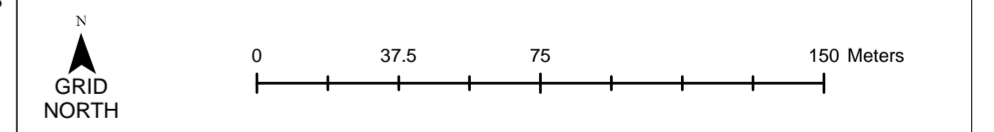
- KEY**
- Category A Tree - High quality (Retention highly desirable)
  - Category A - Hedgerow, Group, Woodland - High quality (Retention highly desirable)
  - Category B Tree - Moderate quality (Retention desirable)
  - Category B - Hedgerow, Group, Woodland - Moderate quality (Retention desirable)
  - Category C Tree - Low quality (May be retained but should not constrain development)
  - Category C - Hedgerow, Group, Woodland - Low quality (May be retained but should not constrain development)
  - Category U Tree - Very low quality (Mostly unsuitable for retention)
  - Category U - Hedgerow, Group, Woodland - Very low quality (Mostly unsuitable for retention)
  - Root Protection Area (RPA) - Layout design tool indicating the minimum area around a tree deemed to contain sufficient roots and soil volume to maintain the tree's viability
  - Shrub mass/offsite tree/out of scope (OOS)
  - Tree/Group/Hedgerow not on topographical survey. Location given is an estimate
- Ancient Tree / Woodland or Veteran Trees**
- Ancient tree/woodland or Veteran tree: Important trees that require special consideration
  - Ancient tree/woodland or Veteran tree buffer: As per published standing advice from Natural England and the Forestry Commission
- Statutory Protection**
- Tree Preservation Order (TPO): Trees under statutory protection. No tree works to be undertaken without specific consent or by relevant exception. The site may be within a designated Conservation Area which restricts tree works. Please see attached advice and guidance.
  - Existing gateway or field access
  - Target Note

Label	Description
OOS 001	Offsite ash, 8m tall
OOS 002	Offsite ash, 9m tall
OOS 003	Offsite ash, 9m tall
OOS 004	Offsite ash, 8m tall
OOS 005	Offsite ash, 8m tall
OOS 006	Collapsed dead tree 12m into site
OOS 007	Semi mature ash - 7m tall
OOS 008	Offsite railway field maple, 3m tall
OOS 009	Heavily decayed ash stump, felled @ 1.5m, approx. dia. 850mm, small crown formed by young re-gen, not posted on top
OOS 010	Young dead stem
OOS 011	Bramble, hawthorn felled out-of-scope hedging
OOS 012	Bramble, hawthorn, blackthorn felled out-of-scope hedging
OOS 013	Saplings with tree protection measures
OOS 014	Saplings with tree protection measures
OOS 015	Sub 75mm predominantly blackthorn
OOS 016	Sub 75mm basal regrowth: crack willow, common ash, field maple, elder
OOS 017	Sub 75mm basal regrowth: crack willow, common ash, field maple, elder, hawthorn
OOS 018	Off-site adjacent to railway side, self established young thorn & maple
OOS 019	Off-site adjacent to railway side, self established young thorn & dogrose
OOS 020	Spash - willow, laurel, sapling laurel
OOS 021	Area of scrub - elder, bramble, sapling hawthorn mix - 2m tall

Label	Description
TW1	Public survey access
TN2	Oak trees within the hedgerow are set back from site redline beyond RPAs
TN3	Oak trees within the hedgerow are set back from site redline beyond RPAs
TN4	Existing compacted earth and stone track



Note: The original of this drawing was produced in colour – a monochrome copy should not be relied upon. This drawing should be interpreted with reference to the accompanying tree schedule and written advice



PROJECT TITLE		Steeple (5343)	
DRAWING TITLE		Tree Survey Plan	
SCALE	Scale: 1:2,000 @ A1	DRAWING NUMBER	BHA_5343_01
DRAWN BY	APPROVED BY	REVISION	SHEET
TB	TH	12 of 19	DATE 14/05/2024
COORDINATE SYSTEM / DATUM British National Grid / Newlyn Datum (AOD)			
CLIENT RES			
CREDITS Crown copyright. All rights reserved. 2024 Ordnance Licence number 0100041064. Ordnance Survey Copyright Licence number 100054267.			

**Barton Hyett Associates**  
Arboricultural Consultants

Tel: 01386 576161  
Address: Office 5E, Deer Park Business Centre,  
Eckington, Peshore, Worcestershire, WR10 3DN

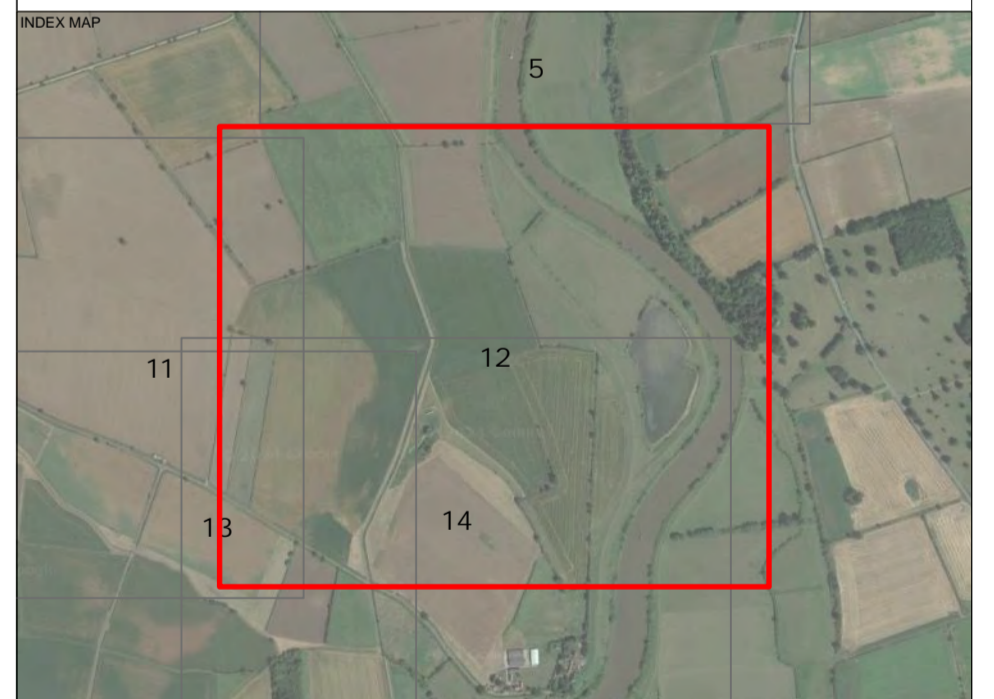




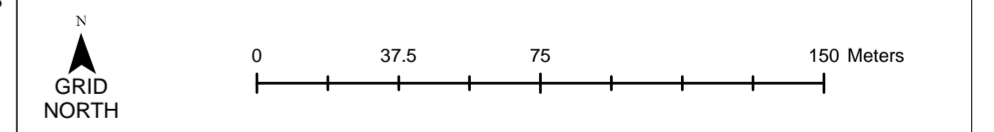
- KEY**
- Category A Tree - High quality (Retention highly desirable)
  - Category A - Hedgerow, Group, Woodland - High quality (Retention highly desirable)
  - Category B Tree - Moderate quality (Retention desirable)
  - Category B - Hedgerow, Group, Woodland - Moderate quality (Retention desirable)
  - Category C Tree - Low quality (May be retained but should not constrain development)
  - Category C - Hedgerow, Group, Woodland - Low quality (May be retained but should not constrain development)
  - Category U Tree - Very low quality (Mostly unsuitable for retention)
  - Category U - Hedgerow, Group, Woodland - Very low quality (Mostly unsuitable for retention)
  - Root Protection Area (RPA) - Layout design tool indicating the minimum area around a tree deemed to contain sufficient roots and soil volume to maintain the tree's viability
  - Shrub mass/offsite tree/out of scope (OOS)
  - Tree/Group/Hedgerow not on topographical survey. Location given is an estimate
  - Ancient Tree / Woodland or Veteran Trees**
  - Ancient tree/woodland or Veteran tree: Important trees that require special consideration
  - Ancient tree/woodland or Veteran tree buffer: As per published standing advice from Natural England and the Forestry Commission
  - Statutory Protection**
  - Tree Preservation Order (TPO): Trees under statutory protection. No tree works to be undertaken without specific consent or by relevant exception. The site may be within a designated Conservation Area which restricts tree works. Please see attached advice and guidance.
  - Existing gateway or field access
  - Target Note

Label	Description
O05 001	Office ash, 8m tall
O05 002	Office ash, 9m tall
O05 003	Office ash, 9m tall
O05 004	Office ash, 8m tall
O05 005	Office ash, 8m tall
O05 006	Collapsed dead tree 12m into site
O05 007	Semi mature ash - 7m tall
O05 008	Office railway field maple, 3m tall
O05 009	Heavily decayed ash stump, felled @ 1.5m, approx. dia. 850mm, small crown formed by young re-gen, not posted on top
O05 010	Young dead stem
O05 011	Bramble, hawthorn felled out-of-scope hedging
O05 012	Bramble, hawthorn, blackthorn felled out-of-scope hedging
O05 013	Saplings with tree protection measures
O05 014	Saplings with tree protection measures
O05 015	Sub 75mm predominantly blackthorn
O05 016	Sub 75mm basal regrowth: crack willow, common ash, field maple, elder
O05 017	Sub 75mm basal regrowth: crack willow, common ash, field maple, elder, hawthorn
O05 018	Off-site adjacent to railway side, self established young thorn & maple
O05 019	Off-site adjacent to railway side, self established young thorn & dogrose
O05 020	Stash - willow, laurel, sapling laurel
O05 021	Area of scrub - elder, bramble, sapling hawthorn mix - 2m tall

Label	Description
TW1	Public survey access
TN2	Oak trees within the hedgerow are set back from site redline beyond RPA's
TN3	Oak trees within the hedgerow are set back from site redline beyond RPA's
TN4	Existing compacted earth and stone track



Note: The original of this drawing was produced in colour – a monochrome copy should not be relied upon. This drawing should be interpreted with reference to the accompanying tree schedule and written advice



PROJECT TITLE  
**Steeple (5343)**

DRAWING TITLE  
**Tree Survey Plan**

SCALE  
**Scale: 1:2,000 @ A1**

DRAWING NUMBER  
**BHA\_5343\_01**

DRAWN BY  
**TH**

APPROVED BY  
**TH**

REVISION  
**12 of 19**

DATE  
**14/05/2024**

COORDINATE SYSTEM / DATUM  
**British National Grid / Newlyn Datum (AOD)**

CLIENT  
**RES**

CREDITS  
Crown copyright. All rights reserved.  
2024 Ordnance Licence number 0100642664.  
Ordnance Survey Copyright Licence number 100054267.

**Barton Hyett Associates**  
Arboricultural Consultants

Tel: 01386 576161  
Address: Office 5E, Deer Park Business Centre,  
Eckington, Peshore, Worcestershire, WR10 3DN

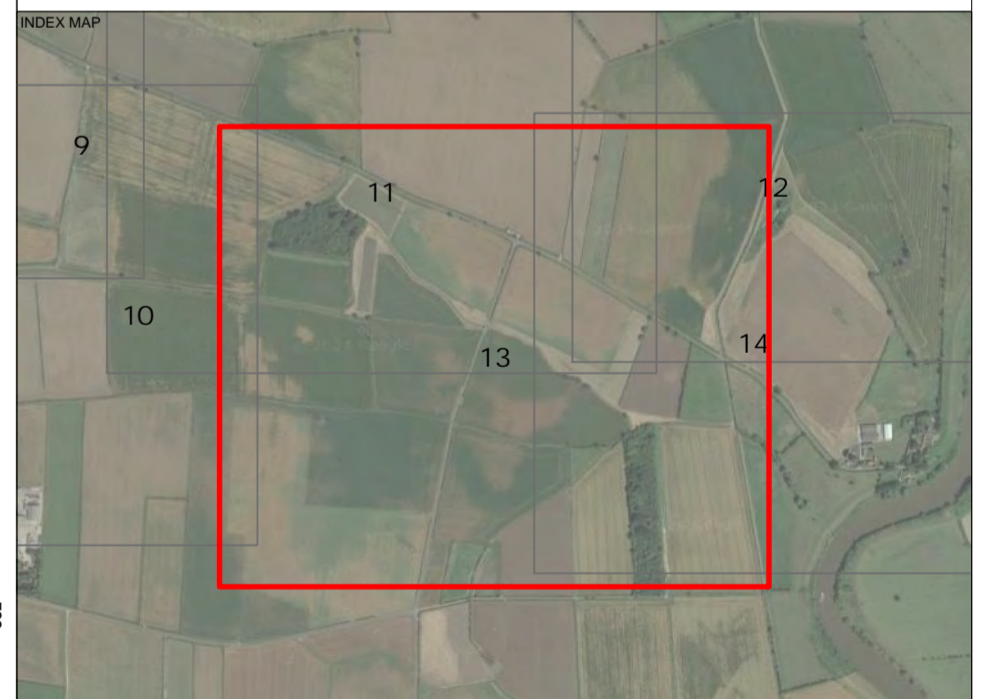




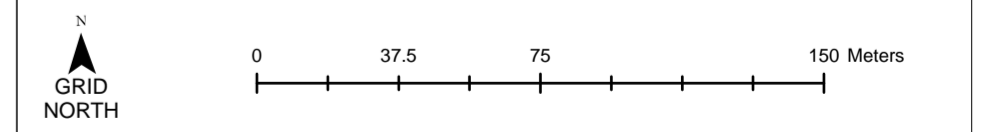
- KEY**
- Category A Tree - High quality (Retention highly desirable)
  - Category A - Hedgerow, Group, Woodland - High quality (Retention highly desirable)
  - Category B Tree - Moderate quality (Retention desirable)
  - Category B - Hedgerow, Group, Woodland - Moderate quality (Retention desirable)
  - Category C Tree - Low quality (May be retained but should not constrain development)
  - Category C - Hedgerow, Group, Woodland - Low quality (May be retained but should not constrain development)
  - Category U Tree - Very low quality (Mostly unsuitable for retention)
  - Category U - Hedgerow, Group, Woodland - Very low quality (Mostly unsuitable for retention)
  - Root Protection Area (RPA) - Layout design tool indicating the minimum area around a tree deemed to contain sufficient roots and soil volume to maintain the tree's viability
  - Shrub mass/offsite tree/out of scope (OOS)
  - Tree/Group/Hedgerow not on topographical survey. Location given is an estimate
  - Ancient tree / Woodland or Veteran Trees
  - Ancient tree/woodland or Veteran tree: Important trees that require special consideration
  - Ancient tree/woodland or Veteran tree buffer: As per published standing advice from Natural England and the Forestry Commission
  - Statutory Protection
  - Tree Preservation Order (TPO): Trees under statutory protection. No tree works to be undertaken without specific consent or by relevant exception. The site may be within a designated Conservation Area which restricts tree works. Please see attached advice and guidance.
  - Existing gateway or field access
  - Target Note

Label	Description
OOS 001	Offsite ash, 8m tall
OOS 002	Offsite ash, 8m tall
OOS 003	Offsite ash, 8m tall
OOS 004	Offsite ash, 8m tall
OOS 005	Offsite ash, 8m tall
OOS 006	Collapsed dead tree 12m into site
OOS 007	Small mature ash - 7m tall
OOS 008	Offsite railway field maple, 3m tall
OOS 009	Heavily decayed ash stump, felled @ 1.5m, approx. dia. 850mm, small crown formed by young re-gen, not posted on top
OOS 010	Young dead stem
OOS 011	Bramble, Hawthorn felled out of scope hedging
OOS 012	Bramble, Hawthorn, Blackthorn felled out of scope hedging
OOS 013	Saplings with tree protection measures.
OOS 014	Saplings with tree protection measures.
OOS 015	Sub 75mm predominantly blackthorn
OOS 016	Sub 75mm basal regrowth: crack willow, common ash, field maple, elder
OOS 017	Sub 75mm basal regrowth: crack willow, common ash, field maple, elder, Hawthorn
OOS 018	Off-site adjacent to railway side, self established young thorn & maple
OOS 019	Off-site adjacent to railway side, self established young thorn & dogrose
OOS 020	Stand - willow, laurel, sapling Hawthorn
OOS 021	Area of scrub - elder, bramble, sapling Hawthorn mix - 2m tall

Label	Description
TN1	Public survey access
TN2	Oak trees within the hedgerow are set back from site redline beyond RPAs
TN3	Oak trees within the hedgerow are set back from site redline beyond RPAs
TN4	Existing compacted earth and stone track



Note: The original of this drawing was produced in colour – a monochrome copy should not be relied upon. This drawing should be interpreted with reference to the accompanying tree schedule and written advice



PROJECT TITLE  
**Steeple (5343)**

DRAWING TITLE  
**Tree Survey Plan**

SCALE	<b>Scale: 1:2,000 @ A1</b>	DRAWING NUMBER	<b>BHA_5343_01</b>
DRAWN BY	<b>TS</b>	APPROVED BY	<b>TH</b>
REVISION	<b>13 of 19</b>	DATE	<b>14/05/2024</b>
COORDINATE SYSTEM / DATUM <b>British National Grid / Newlyn Datum (AOD)</b>			
CLIENT	<b>RES</b>		

CREDITS  
 Crown copyright. All rights reserved.  
 2024 Ordnance Licence number 010061064.  
 Ordnance Survey Copyright Licence number 100054267.

**Barton Hyett Associates**  
 Arboricultural Consultants  
 Tel: 01386 576161  
 Address: Office 5E, Deer Park Business Centre,  
 Eckington, Peshore, Worcestershire, WR10 3DN





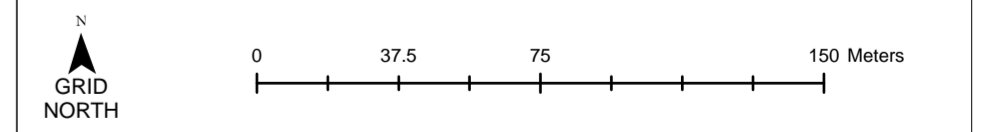
- KEY**
- Category A Tree - High quality (Retention highly desirable)
  - Category A - Hedgerow, Group, Woodland - High quality (Retention highly desirable)
  - Category B Tree - Moderate quality (Retention desirable)
  - Category B - Hedgerow, Group, Woodland - Moderate quality (Retention desirable)
  - Category C Tree - Low quality (May be retained but should not constrain development)
  - Category C - Hedgerow, Group, Woodland - Low quality (May be retained but should not constrain development)
  - Category U Tree - Very low quality (Mostly unsuitable for retention)
  - Category U - Hedgerow, Group, Woodland - Very low quality (Mostly unsuitable for retention)
  - Root Protection Area (RPA) - Layout design tool indicating the minimum area around a tree deemed to contain sufficient roots and soil volume to maintain the tree's viability
  - Shrub mass/offsite tree/out of scope (OOS)
  - Tree/Group/Hedgerow not on topographical survey. Location given is an estimate
  - Ancient Tree / Woodland or Veteran Trees
  - Ancient tree/woodland or Veteran tree: Important trees that require special consideration
  - Ancient tree/woodland or Veteran tree buffer: As per published standing advice from Natural England and the Forestry Commission
  - Statutory Protection
  - Tree Preservation Order (TPO): Trees under statutory protection. No tree works to be undertaken without specific consent or by relevant exception. The site may be within a designated Conservation Area which restricts tree works. Please see attached advice and guidance.
  - Existing gateway or field access
  - Target Note

Label	Description
OOS 001	Offsite ash, 8m tall
OOS 002	Offsite ash, 9m tall
OOS 003	Offsite ash, 9m tall
OOS 004	Offsite ash, 9m tall
OOS 005	Offsite ash, 8m tall
OOS 006	Collapsed dead tree 12m into site
OOS 007	Small mature ash - 7m tall
OOS 008	Offsite railway field maple, 3m tall
OOS 009	Heavily decayed ash stump, felled @ 1.5m, approx. dia. 850mm, small crown formed by young re-gen, not posted on top
OOS 010	Young dead stem
OOS 011	Bramble, Hawthorn felled out of-escape hedging
OOS 012	Bramble, Hawthorn, Blackthorn felled out of-escape hedging
OOS 013	Saplings with tree protection measures.
OOS 014	Saplings with tree protection measures.
OOS 015	Sub 75mm predominantly blackthorn
OOS 016	Sub 75mm basal regrowth: crack willow, common ash, field maple, elder
OOS 017	Sub 75mm basal regrowth: crack willow, common ash, field maple, elder, hawthorn
OOS 018	Off-site adjacent to railway side, self established young thorn & maple
OOS 019	Off-site adjacent to railway side, self established young thorn & dogrose
OOS 020	Small - elder, laurel, sapling laurel
OOS 021	Area of scrub - elder, laurel, sapling hawthorn mix - 2m tall

Label	Description
TW1	Public survey access
TN2	Oak trees within the hedgerow are set back from site redline beyond RPA's
TN3	Oak trees within the hedgerow are set back from site redline beyond RPA's
TN4	Existing compacted earth and stone track



Note: The original of this drawing was produced in colour – a monochrome copy should not be relied upon. This drawing should be interpreted with reference to the accompanying tree schedule and written advice



PROJECT TITLE  
**Steeple (5343)**

DRAWING TITLE  
**Tree Survey Plan**

SCALE	<b>Scale: 1:2,000 @ A1</b>	DRAWING NUMBER	<b>BHA_5343_01</b>
DRAWN BY	<b>TH</b>	APPROVED BY	<b>TH</b>
REVISION	<b>14 of 19</b>	DATE	<b>14/05/2024</b>
COORDINATE SYSTEM / DATUM <b>British National Grid / Newlyn Datum (AOD)</b>			
CLIENT	<b>RES</b>		

CREDITS  
 Crown copyright. All rights reserved.  
 2104 Ordnance Licence number 010061064.  
 Ordnance Survey Copyright Licence number 100054267.

**Barton Hyett Associates**  
 Arboricultural Consultants  
 Tel: 01386 576161  
 Address: Office 5E, Deer Park Business Centre,  
 Eckington, Pershore, Worcestershire, WR10 3DN

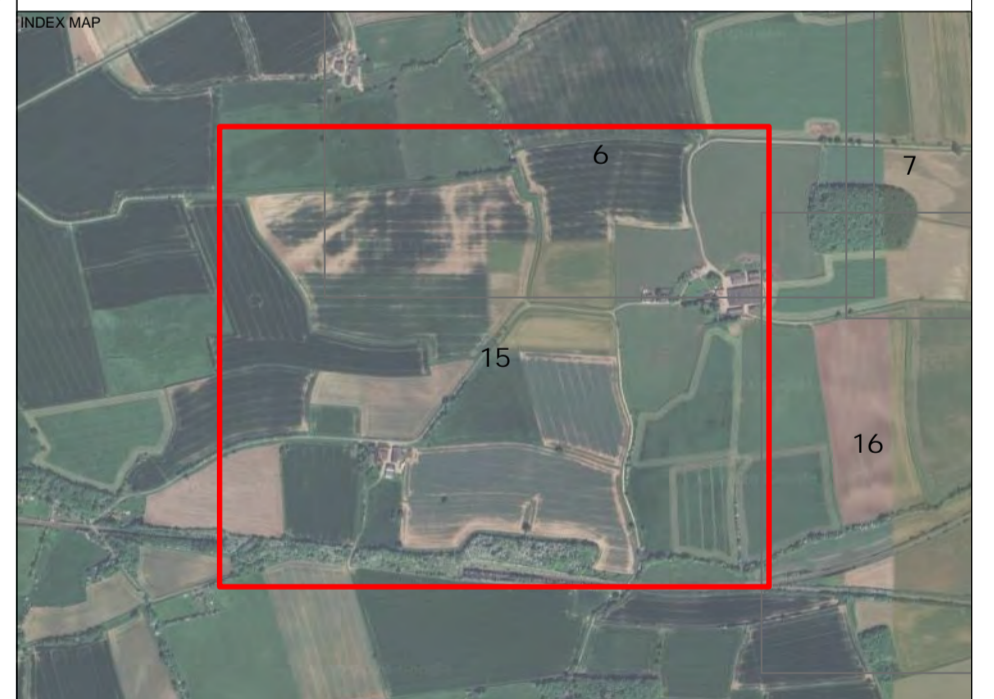




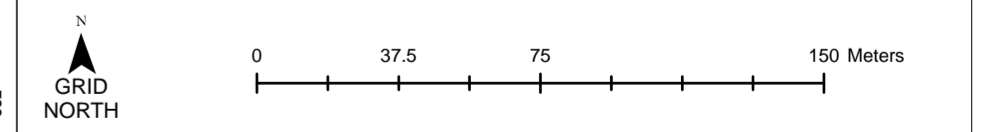
- KEY**
- Category A Tree - High quality (Retention highly desirable)
  - Category A - Hedgerow, Group, Woodland - High quality (Retention highly desirable)
  - Category B Tree - Moderate quality (Retention desirable)
  - Category B - Hedgerow, Group, Woodland - Moderate quality (Retention desirable)
  - Category C Tree - Low quality (May be retained but should not constrain development)
  - Category C - Hedgerow, Group, Woodland - Low quality (May be retained but should not constrain development)
  - Category U Tree - Very low quality (Mostly unsuitable for retention)
  - Category U - Hedgerow, Group, Woodland - Very low quality (Mostly unsuitable for retention)
  - Root Protection Area (RPA) - Layout design tool indicating the minimum area around a tree deemed to contain sufficient roots and soil volume to maintain the tree's viability
  - Shrub mass/off-site tree/out of scope (OOS)
  - Tree/Group/Hedgerow not on topographical survey. Location given is an estimate
- Ancient Tree / Woodland or Veteran Trees**
- Ancient tree/woodland or Veteran tree: Important trees that require special consideration
  - Ancient tree/woodland or Veteran tree buffer: As per published standing advice from Natural England and the Forestry Commission
- Statutory Protection**
- Tree Preservation Order (TPO): Trees under statutory protection. No tree works to be undertaken without specific consent or by relevant exception. The site may be within a designated Conservation Area which restricts tree works. Please see attached advice and guidance.
  - Existing gateway or field access
  - Target Note

Label	Description
OOS 001	Office ash, 8m tall
OOS 002	Office ash, 9m tall
OOS 003	Office ash, 9m tall
OOS 004	Office ash, 9m tall
OOS 005	Office ash, 8m tall
OOS 006	Collapsed dead tree 12m into site
OOS 007	Small mature ash - 7m tall
OOS 008	Office railway field maple, 3m tall
OOS 009	Heavily decayed ash stump, felled @ 1.5m, approx. dia. 850mm, small crown formed by young re-gen, not planted on top
OOS 010	Young dead stem
OOS 011	Bramble, Hawthorn felled out-of-scope hedging
OOS 012	Bramble, Hawthorn, Blackthorn felled out-of-scope hedging
OOS 013	Saplings with tree protection measures.
OOS 014	Saplings with tree protection measures.
OOS 015	Sub 75mm predominantly blackthorn
OOS 016	Sub 75mm basal regrowth: crack willow, common ash, field maple, elder
OOS 017	Sub 75mm basal regrowth: crack willow, common ash, field maple, elder, hawthorn
OOS 018	Off-site adjacent to railway side, self established young thorn & maple
OOS 019	Off-site adjacent to railway side, self established young thorn & dogrose
OOS 020	Stand - willow, laurel, sapling hawthorn
OOS 021	Area of scrub - elder, bramble, sapling hawthorn mix - 2m tall

Label	Description
TN1	Public survey access
TN2	Oak trees within the hedgerow are set back from site redline beyond RPA's
TN3	Oak trees within the hedgerow are set back from site redline beyond RPA's
TN4	Existing compacted earth and stone track



Note: The original of this drawing was produced in colour – a monochrome copy should not be relied upon. This drawing should be interpreted with reference to the accompanying tree schedule and written advice



PROJECT TITLE: Steeple (5343)

DRAWING TITLE: Tree Survey Plan

SCALE: Scale: 1:2,000 @ A1	DRAWING NUMBER: BHA_5343_01
DRAWN BY: TS	APPROVED BY: BH
REVISION: 15 of 19	DATE: 14/05/2024
COORDINATE SYSTEM / DATUM: British National Grid / Newlyn Datum (AOD)	
CLIENT: RES	
CREDITS: Crown copyright. All rights reserved. 2024. Ordnance Licence number 0100961064. Ordnance Survey Copyright Licence number 100054267.	

**Barton Hyett Associates**  
Arboricultural Consultants

Tel: 01386 576161  
Address: Office 5E, Deer Park Business Centre, Eckington, Peshore, Worcestershire, WR10 3DN

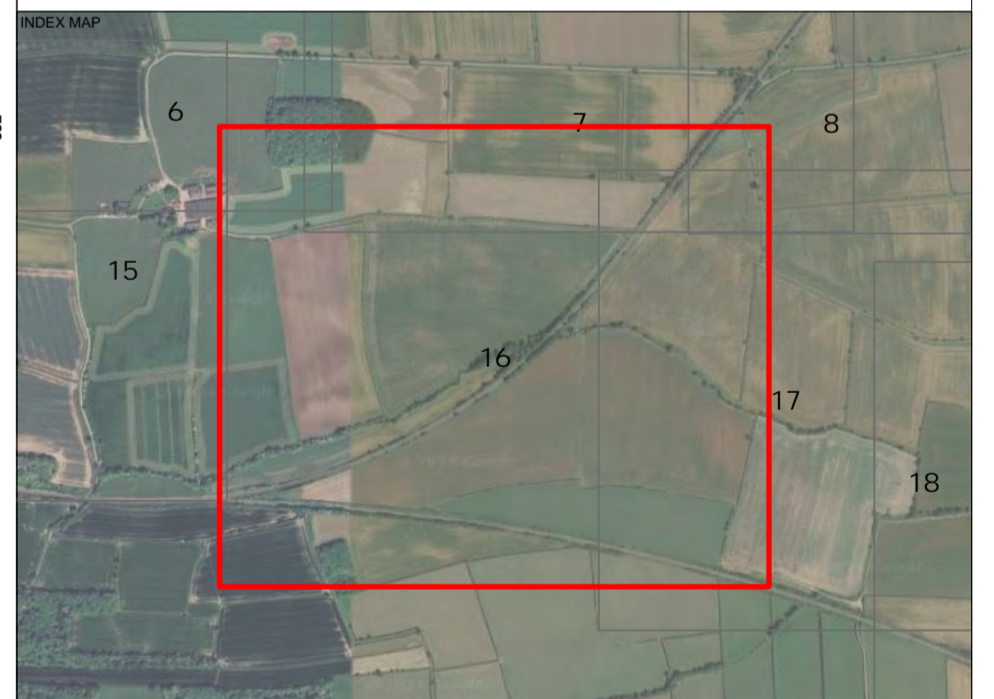




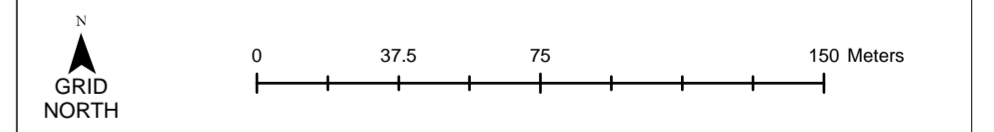
- KEY**
- Category A Tree - High quality (Retention highly desirable)
  - Category A - Hedgerow, Group, Woodland - High quality (Retention highly desirable)
  - Category B Tree - Moderate quality (Retention desirable)
  - Category B - Hedgerow, Group, Woodland - Moderate quality (Retention desirable)
  - Category C Tree - Low quality (May be retained but should not constrain development)
  - Category C - Hedgerow, Group, Woodland - Low quality (May be retained but should not constrain development)
  - Category U Tree - Very low quality (Mostly unsuitable for retention)
  - Category U - Hedgerow, Group, Woodland - Very low quality (Mostly unsuitable for retention)
  - Root Protection Area (RPA) - Layout design tool indicating the minimum area around a tree deemed to contain sufficient roots and soil volume to maintain the tree's viability
  - Shrub mass/off-site tree/out of scope (OOS)
  - Tree/Group/Hedgerow not on topographical survey. Location given is an estimate
  - Ancient Tree / Woodland or Veteran Trees
  - Ancient tree/woodland or Veteran tree: Important trees that require special consideration
  - Ancient tree/woodland or Veteran tree buffer: As per published standing advice from Natural England and the Forestry Commission
  - Statutory Protection
  - Tree Preservation Order (TPO): Trees under statutory protection. No tree works to be undertaken without specific consent or by relevant exception. The site may be within a designated Conservation Area which restricts tree works. Please see attached advice and guidance.
  - Existing gateway or field access
  - Target Note

Label	Description
OOS 001	Off-site ash, 8m tall
OOS 002	Off-site ash, 8m tall
OOS 003	Off-site ash, 8m tall
OOS 004	Off-site ash, 8m tall
OOS 005	Off-site ash, 8m tall
OOS 006	Collapsed dead tree 12m into site
OOS 007	Small mature ash - 7m tall
OOS 008	Off-site railway field maple, 3m tall
OOS 009	Heavily decayed ash stump, felled @ 1.5m, approx. dia. 850mm, small crown formed by young re-gen, not posted on top
OOS 010	Young dead stem
OOS 011	Bramble, Hawthorn felled out-of-scope hedging
OOS 012	Bramble, Hawthorn, Blackthorn felled out-of-scope hedging
OOS 013	Saplings with tree protection measures
OOS 014	Saplings with tree protection measures
OOS 015	Sub 75mm predominantly blackthorn
OOS 016	Sub 75mm basal regrowth: crack willow, common ash, field maple, elder
OOS 017	Sub 75mm basal regrowth: crack willow, common ash, field maple, elder, hawthorn
OOS 018	Off-site adjacent to railway side, self established young thorn & maple
OOS 019	Off-site adjacent to railway side, self established young thorn & dogrose
OOS 020	Spruce - mature, heavily shading hawthorn
OOS 021	Area of scrub - elder, bramble, sapling hawthorn mix - 2m tall

Label	Description
TN1	Public survey access
TN2	Oak trees within the hedgerow are set back from site redline beyond RPAs
TN3	Oak trees within the hedgerow are set back from site redline beyond RPAs
TN4	Existing compacted earth and stone track



Note: The original of this drawing was produced in colour – a monochrome copy should not be relied upon. This drawing should be interpreted with reference to the accompanying tree schedule and written advice



PROJECT TITLE		Steeple (5343)	
DRAWING TITLE		Tree Survey Plan	
SCALE	Scale: 1:2,000 @ A1	DRAWING NUMBER	BHA_5343_01
DRAWN BY	TB	APPROVED BY	TH
REVISION	16 of 19	DATE	14/05/2024
COORDINATE SYSTEM / DATUM British National Grid / Newlyn Datum (AOD)			
CLIENT		RES	
CREDITS Crown copyright. All rights reserved. 2024 Ordnance Licence number 010061064. Ordnance Survey Copyright Licence number 100054267.			

**Barton Hyett Associates**  
Arboricultural Consultants

Tel: 01386 576161  
Address: Office 5E, Deer Park Business Centre,  
Eckington, Peshore, Worcestershire, WR10 3DN

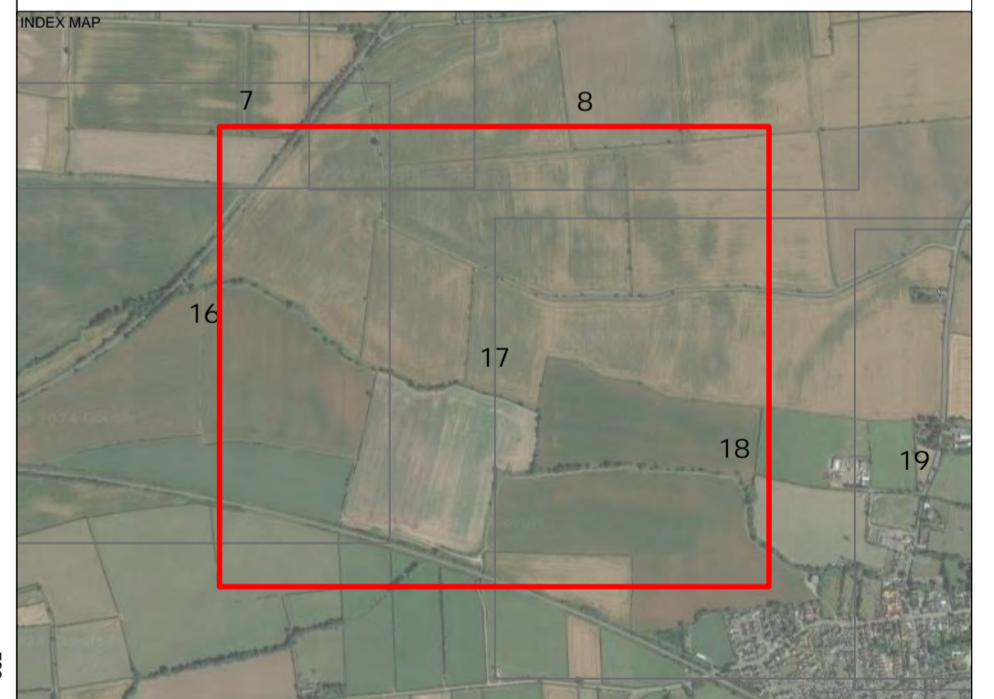




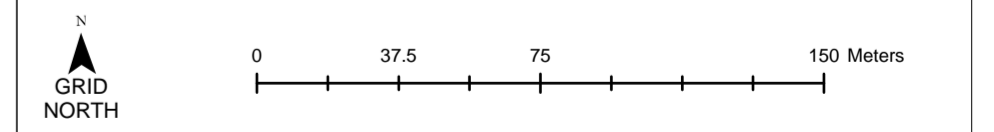
- KEY**
- Category A Tree - High quality (Retention highly desirable)
  - Category A - Hedgerow, Group, Woodland - High quality (Retention highly desirable)
  - Category B Tree - Moderate quality (Retention desirable)
  - Category B - Hedgerow, Group, Woodland - Moderate quality (Retention desirable)
  - Category C Tree - Low quality (May be retained but should not constrain development)
  - Category C - Hedgerow, Group, Woodland - Low quality (May be retained but should not constrain development)
  - Category U Tree - Very low quality (Mostly unsuitable for retention)
  - Category U - Hedgerow, Group, Woodland - Very low quality (Mostly unsuitable for retention)
  - Root Protection Area (RPA) - Layout design tool indicating the minimum area around a tree deemed to contain sufficient roots and soil volume to maintain the tree's viability
  - Shrub mass/offsite tree/out of scope (OOS)
  - Tree/Group/Hedgerow not on topographical survey. Location given is an estimate
  - Ancient Tree / Woodland or Veteran Trees**
  - Ancient tree/woodland or Veteran tree: Important trees that require special consideration
  - Ancient tree/woodland or Veteran tree buffer: As per published standing advice from Natural England and the Forestry Commission
  - Statutory Protection**
  - Tree Preservation Order (TPO): Trees under statutory protection. No tree works to be undertaken without specific consent or by relevant exception. The site may be within a designated Conservation Area which restricts tree works. Please see attached advice and guidance.
  - Existing gateway or field access
  - Target Note

Label	Description
O05 001	Offsite ash, 8m tall
O05 002	Offsite ash, 9m tall
O05 003	Offsite ash, 9m tall
O05 004	Offsite ash, 9m tall
O05 005	Offsite ash, 8m tall
O05 006	Collapsed dead tree 12m into site
O05 007	Small mature ash - 7m tall
O05 008	Offsite railway field maple, 3m tall
O05 009	Heavily decayed ash stump, felled @ 1.5m, approx. dia. 850mm, small crown formed by young re-gen, not posted on top
O05 010	Young dead stem
O05 011	Bramble, hawthorn felled out-of-scope hedging
O05 012	Bramble, hawthorn, Blackthorn felled out-of-scope hedging
O05 013	Saplings with tree protection measures.
O05 014	Saplings with tree protection measures.
O05 015	Sub 75mm predominantly blackthorn
O05 016	Sub 75mm basal regrowth: crack willow, common ash, field maple, elder
O05 017	Sub 75mm basal regrowth: crack willow, common ash, field maple, elder, hawthorn
O05 018	Off-site adjacent to railway side, self established young thorn & maple
O05 019	Off-site adjacent to railway side, self established young thorn & dogrose
O05 020	Sand - elder, laurel, sapling hawthorn
O05 021	Area of scrub - elder, bramble, sapling hawthorn mix - 2m tall

Label	Description
TN1	Public survey access
TN2	Oak trees within the hedgerow are set back from site redline beyond RPA's
TN3	Oak trees within the hedgerow are set back from site redline beyond RPA's
TN4	Existing compacted earth and stone track



Note: The original of this drawing was produced in colour – a monochrome copy should not be relied upon. This drawing should be interpreted with reference to the accompanying tree schedule and written advice



PROJECT TITLE: **Steeple (5343)**

DRAWING TITLE: **Tree Survey Plan**

SCALE: <b>Scale: 1:2,000 @ A1</b>	DRAWING NUMBER: <b>BHA_5343_01</b>
DRAWN BY: <b>TB</b>	APPROVED BY: <b>BH</b>
REVISION: <b>17 of 19</b>	DATE: <b>14/05/2024</b>
COORDINATE SYSTEM / DATUM: <b>British National Grid / Newlyn Datum (AOD)</b>	
CLIENT: <b>RES</b>	

CREDITS: Crown copyright. All rights reserved. 2024 Ordnance Survey Licence number 010064264. Ordnance Survey Copyright Licence number 100054267.

**Barton Hyett Associates**  
Arboricultural Consultants

Tel: 01386 576161  
Address: Office 5E, Deer Park Business Centre, Eckington, Peshore, Worcestershire, WR10 3DN

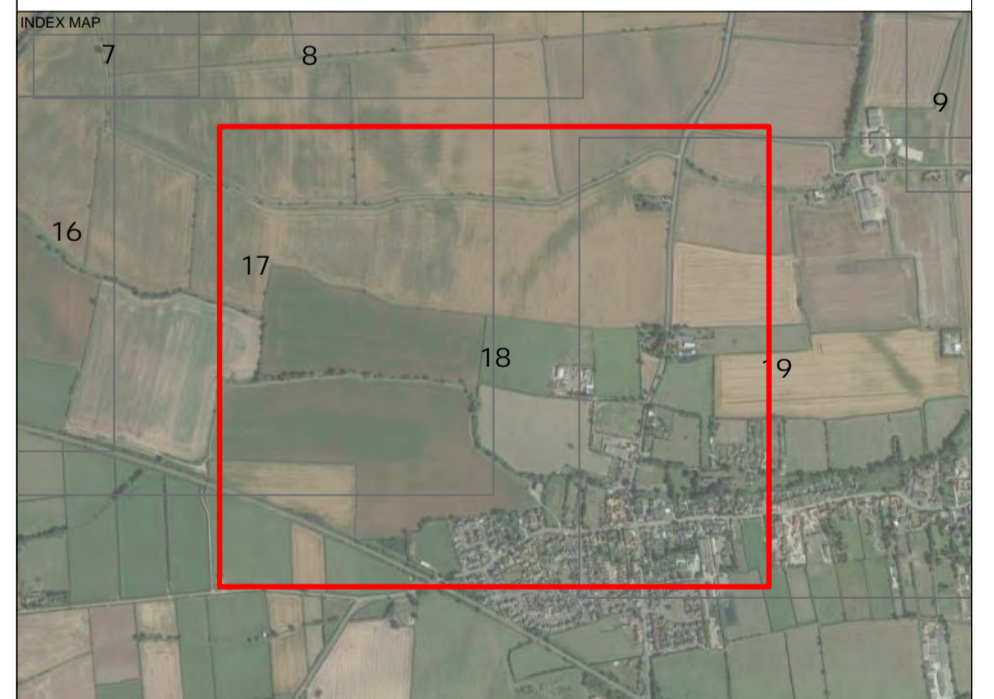




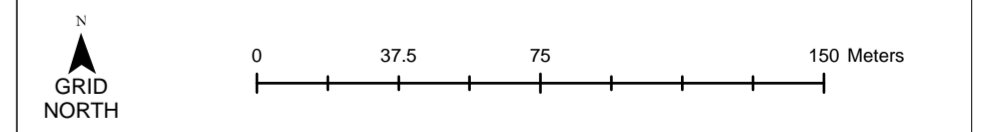
- KEY**
- Category A Tree - High quality (Retention highly desirable)
  - Category A - Hedgerow, Group, Woodland - High quality (Retention highly desirable)
  - Category B Tree - Moderate quality (Retention desirable)
  - Category B - Hedgerow, Group, Woodland - Moderate quality (Retention desirable)
  - Category C Tree - Low quality (May be retained but should not constrain development)
  - Category C - Hedgerow, Group, Woodland - Low quality (May be retained but should not constrain development)
  - Category U Tree - Very low quality (Mostly unsuitable for retention)
  - Category U - Hedgerow, Group, Woodland - Very low quality (Mostly unsuitable for retention)
  - Root Protection Area (RPA) - Layout design tool indicating the minimum area around a tree deemed to contain sufficient roots and soil volume to maintain the tree's viability
  - Shrub mass/off-site tree/out of scope (OOS)
  - Tree/Group/Hedgerow not on topographical survey. Location given is an estimate
- Ancient Tree / Woodland or Veteran Trees**
- Ancient tree/woodland or Veteran tree: Important trees that require special consideration
  - Ancient tree/woodland or Veteran tree buffer: As per published standing advice from Natural England and the Forestry Commission
- Statutory Protection**
- Tree Preservation Order (TPO): Trees under statutory protection. No tree works to be undertaken without specific consent or by relevant exception. The site may be within a designated Conservation Area which restricts tree works. Please see attached advice and guidance.
  - Existing gateway or field access
  - Target Note

Label	Description
O05 001	Office ash, 8m tall
O05 002	Office ash, 8m tall
O05 003	Office ash, 8m tall
O05 004	Office ash, 8m tall
O05 005	Office ash, 8m tall
O05 006	Collapsed dead tree 12m into site
O05 007	Small mature ash - 7m tall
O05 008	Office railway field maple, 3m tall
O05 009	Heavily decayed ash stump, felled @ 1.5m, approx. dia. 850mm, small crown formed by young re-gen, not planted on top
O05 010	Young dead stem
O05 011	Bramble, Hawthorn felled out-of-scope hedging
O05 012	Bramble, Hawthorn, Blackthorn felled out-of-scope hedging
O05 013	Saplings with tree protection measures
O05 014	Saplings with tree protection measures
O05 015	Sub 75mm predominantly blackthorn
O05 016	Sub 75mm basal regrowth: crack willow, common ash, field maple, elder
O05 017	Sub 75mm basal regrowth: crack willow, common ash, field maple, elder, hawthorn
O05 018	Off-site adjacent to railway side, self established young thorn & maple
O05 019	Off-site adjacent to railway side, self established young thorn & dogrose
O05 020	Scrub - willow, laurel, sapling hawthorn
O05 021	Area of scrub - elder, bramble, sapling hawthorn mix - 2m tall

Label	Description
TN1	Public survey access
TN2	Oak trees within the hedgerow are set back from site redline beyond RPAs
TN3	Oak trees within the hedgerow are set back from site redline beyond RPAs
TN4	Existing compacted earth and stone track



Note: The original of this drawing was produced in colour – a monochrome copy should not be relied upon. This drawing should be interpreted with reference to the accompanying tree schedule and written advice



PROJECT TITLE  
**Steeple (5343)**

DRAWING TITLE  
**Tree Survey Plan**

SCALE	<b>Scale: 1:2,000 @ A1</b>	DRAWING NUMBER	<b>BHA_5343_01</b>
DRAWN BY	<b>TH</b>	APPROVED BY	<b>TH</b>
REVISION	<b>18 of 19</b>	DATE	<b>14/05/2024</b>
COORDINATE SYSTEM / DATUM <b>British National Grid / Newlyn Datum (AOD)</b>			
CLIENT	<b>RES</b>		

CREDITS  
 Crown copyright. All rights reserved.  
 2104 Ordnance Licence number 0100861064.  
 Ordnance Survey Copyright Licence number 100054267.

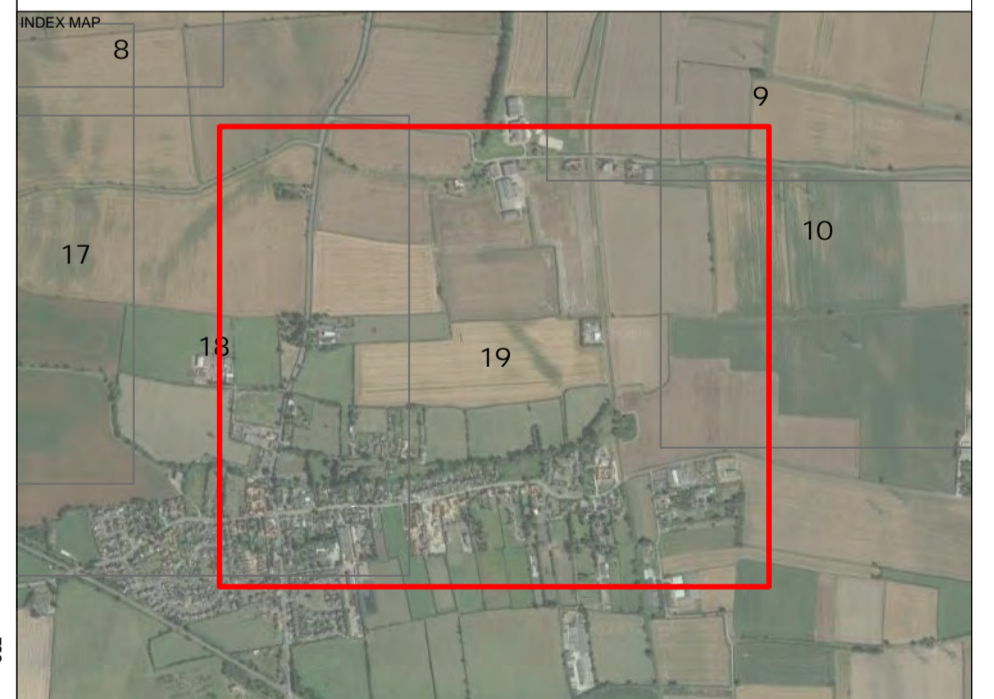
**Barton Hyett Associates**  
 Arbicultural Consultants  
 Tel: 01386 576161  
 Address: Office 5E, Deer Park Business Centre,  
 Eckington, Peshore, Worcestershire, WR10 3DN



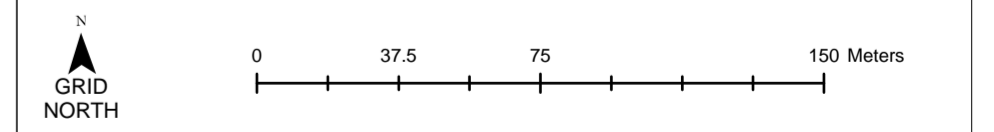


- KEY**
- Category A Tree - High quality (Retention highly desirable)
  - Category A - Hedgerow, Group, Woodland - High quality (Retention highly desirable)
  - Category B Tree - Moderate quality (Retention desirable)
  - Category B - Hedgerow, Group, Woodland - Moderate quality (Retention desirable)
  - Category C Tree - Low quality (May be retained but should not constrain development)
  - Category C - Hedgerow, Group, Woodland - Low quality (May be retained but should not constrain development)
  - Category U Tree - Very low quality (Mostly unsuitable for retention)
  - Category U - Hedgerow, Group, Woodland - Very low quality (Mostly unsuitable for retention)
  - Root Protection Area (RPA) - Layout design tool indicating the minimum area around a tree deemed to contain sufficient roots and soil volume to maintain the tree's viability
  - Shrub mass/offsite tree/out of scope (OOS)
  - Tree/Group/Hedgerow not on topographical survey. Location given is an estimate
  - Ancient Tree / Woodland or Veteran Trees
  - Ancient tree/woodland or Veteran tree: Important trees that require special consideration
  - Ancient tree/woodland or Veteran tree buffer: As per published standing advice from Natural England and the Forestry Commission
  - Statutory Protection**
  - Tree Preservation Order (TPO): Trees under statutory protection. No tree works to be undertaken without specific consent or by relevant exception. The site may be within a designated Conservation Area which restricts tree works. Please see attached advice and guidance.
  - Existing gateway or field access
  - Target Note

Label	Description
OOS 001	Offsite ash, 8m tall
OOS 002	Offsite ash, 9m tall
OOS 003	Offsite ash, 9m tall
OOS 004	Offsite ash, 9m tall
OOS 005	Offsite ash, 8m tall
OOS 006	Collapsed dead tree 12m into site
OOS 007	Small mature ash - 7m tall
OOS 008	Offsite railway field maple, 3m tall
OOS 009	Heavily decayed ash stump, felled @ 1.5m, approx. dia. 850mm, small crown formed by young re-gen, not posted on top
OOS 010	Young dead stem
OOS 011	Bramble, Hawthorn felled out-of-scope hedging
OOS 012	Bramble, Hawthorn, Blackthorn felled out-of-scope hedging
OOS 013	Saplings with tree protection measures.
OOS 014	Saplings with tree protection measures.
OOS 015	Sub 75mm predominantly blackthorn
OOS 016	Sub 75mm basal regrowth: crack willow, common ash, field maple, elder
OOS 017	Sub 75mm basal regrowth: crack willow, common ash, field maple, elder, Hawthorn
OOS 018	Off-site adjacent to railway side, self established young thorn & maple
OOS 019	Off-site adjacent to railway side, self established young thorn & dogrose
OOS 020	Scrub: willow, laurel, sapling hawthorn
OOS 021	Area of scrub - elder, bramble, sapling hawthorn mix - 2m tall
TN1	Public survey access
TN2	Oak trees within the hedgerow are set back from site redline beyond RPA's
TN3	Oak trees within the hedgerow are set back from site redline beyond RPA's
TN4	Existing compacted earth and stone track



Note: The original of this drawing was produced in colour – a monochrome copy should not be relied upon. This drawing should be interpreted with reference to the accompanying tree schedule and written advice



PROJECT TITLE: **Steeple (5343)**

DRAWING TITLE: **Tree Survey Plan**

SCALE: <b>Scale: 1:2,000 @ A1</b>	DRAWING NUMBER: <b>BHA_5343_01</b>
DRAWN BY: <b>TH</b>	APPROVED BY: <b>TH</b>
REVISION: <b>19 of 19</b>	DATE: <b>14/05/2024</b>
COORDINATE SYSTEM / DATUM: <b>British National Grid / Newlyn Datum (AOD)</b>	
CLIENT: <b>RES</b>	
CREDITS: Crown copyright. All rights reserved. 2024 Ordnance Licence number 0100961064. Ordnance Survey Copyright Licence number 100054267.	

**Barton Hyett Associates**  
Arboricultural Consultants

Tel: 01386 576161  
Address: Office 5E, Deer Park Business Centre, Eckington, Pershore, Worcestershire, WR10 3DN



**INDIVIDUAL TREES**

Ref	Species	On/off site	Height (m)	No. of stems	Est diam?	Calc. / actual stem dia. (mm)	Crown radii (m) N-E-S-W	Av. low crown height (m)	1st branch ht (m)	1st branch dir.	Life stage	Special importance	General observations	Health & vitality	Structural condition	Estimated remaining contribution (Years)	BS 5837 Category	RPA radius (m)	RPA m <sup>2</sup>	Veteran / ancient tree buffer(m)
T1	Ash (Common)	On	10.0	1	Yes	600	5.0-5.0-4.0-5.0	4.0	3.0	E	M	None	Hedgerow tree; large cavity at base with sections of deadwood.	Fair	Fair	10+	C1	7.2	163.0	-
T2	Ash (Common)	Off	12.0	1	Yes	320	4.0-3.0-4.0-5.0	4.0	3.0	E	M	None	Hedgerow offsite tree in decline. Dead branch leaning towards field.	Fair	Fair	10+	C1	3.8	46.0	-
T3	Oak (English)	On	14.0	1	Yes	850	8.0-8.0-8.0-7.0	4.0	3.0	W	M	None	Typical for age and species; minor deadwood.	Good	Good	40+	B1	10.2	327.0	-
T4	Ash (Common)	Off	12.0	3	Yes	420	5.0-7.0-5.0-3.0	4.0	2.0	S	EM	None	Typical for age and species; overhanging site.	Good	Fair	20+	C1	5.0	80.0	-
T5	Ash (Common)	Off	10.0	1	Yes	300	3.0-3.0-6.0-5.0	4.0	0.5	S	EM	None	Hedgerow tree overhanging site by 6m.	Fair	Fair	20+	C1	3.6	41.0	-
T6	Ash (Common)	On	15.0	3	Yes	590	7.0-6.0-9.0-6.0	4.0	2.0	W	M	None	Typical for age and species.	Good	Good	40+	B1	7.1	157.0	-
T7	Ash (Common)	On	15.0	5	Yes	560	6.0-6.0-7.0-6.0	4.0	0.0	E	M	None	Typical for age and species.	Good	Good	40+	B1	6.7	142.0	-
T8	Ash (Common)	Off	7.0	1	Yes	100	2.0-2.0-2.0-2.0	2.0	0.0	W	SM	None	Typical for age and species.	Good	Good	20+	C1	1.3	5.0	-
T9	Ash (Common)	Off	10.0	1	Yes	250	3.0-10.0-4.0-3.0	5.0	4.0	W	EM	None	Typical for age and species; significantly overhanging site.	Good	Fair	20+	C1	3.0	28.0	-
T10	Ash (Common)	On	10.0	1	Yes	450	5.0-5.0-5.0-5.0	4.0	3.0	E	M	None	Hedgerow tree; typical for age and species. Minor deadwood	Fair	Fair	20+	C1	5.4	92.0	-
T11	Maple (Field)	Off	10.0	4	Yes	380	5.0-5.0-5.0-5.0	4.0	1.0	E	EM	None	Hedgerow tree; crown lifted over field side.	Good	Good	40+	C1	4.5	65.0	-
T12	Hawthorn	On	9.0	1	Yes	310	5.0-4.0-5.0-6.0	4.0	2.0	S	EM	None	Hedgerow tree; crown lifted over fields.	Good	Good	40+	B1	3.7	43.0	-
T13	Maple (Field)	On	8.0	5	Yes	460	5.0-5.0-6.0-5.0	2.0	0.5	E	EM	None	Hedgerow tree; crown lifted over field side. Ditch to the north.	Good	Good	40+	B1	5.5	96.0	-
T14	Ash (Common)	On	10.0	4	Yes	470	5.0-5.0-6.0-5.0	4.0	1.0	W	EM	None	Hedgerow tree; crown lifted over field side. Ditch to the north. Reduced vitality in crown	Fair	Good	20+	C1	5.6	100.0	-
T15	Hawthorn	Off	6.0	3	Yes	290	4.0-5.0-4.0-4.0	3.0	1.0	W	M	None	Hedgerow tree; crown lifted over field.	Good	Good	40+	C1	3.5	38.0	-
T16	Ash (Common)	On	11.0	1	Yes	600	5.0-6.0-5.0-6.0	4.0	2.0	S	EM	None	Hedgerow tree; lost main leader with regrowth.	Fair	Fair	20+	C1	7.2	163.0	-



Ref	Species	On/off site	Height (m)	No. of stems	Est diam?	Calc. / actual stem dia. (mm)	Crown radii (m) N-E-S-W	Av. low crown height (m)	1st branch ht (m)	1st branch dir.	Life stage	Special importance	General observations	Health & vitality	Structural condition	Estimated remaining contribution (Years)	BS 5837 Category	RPA radius (m)	RPA m <sup>2</sup>	Veteran / ancient tree buffer(m)
T17	Ash (Common)	On	12.0	1	Yes	500	5.0-5.0-6.0-5.0	4.0	3.0	E	M	None	Hedgerow tree; lost main leader. Ditch to the north.	Good	Fair	20+	C1	6.0	113.0	-
T18	Ash (Common)	On	9.0	1	Yes	450	3.0-3.0-4.0-4.0	4.0	1.0	E	EM	None	Hedgerow tree; large cavity at base and in decline.	Fair	Poor	10+	C1	5.4	92.0	-
T19	Ash (Common)	On	11.0	1	Yes	700	7.0-5.0-5.0-5.0	5.0	3.0	N	M	None	Inonotus present. Several lost branches.	Good	Fair	20+	B3	8.4	222.0	-
T20	Ash (Common)	On	11.0	1	Yes	600	3.0-3.0-3.0-3.0	4.0	0.0	N	M	None	Centre of ash decaying up to 2.5m with inonotus at 4m and 5m.	Fair	Poor	10+	B3	7.2	163.0	-
T21	Ash (Common)	On	11.0	2	Yes	370	7.0-7.0-7.0-7.0	3.0	5.0	N	M	None	Hedgerow tree. Typical for age and species.	Good	Good	40+	B1	4.4	62.0	-
T22	Maple (Field)	On	7.0	6	Yes	170	3.0-2.0-2.0-2.0	4.0	0.0	N	M	None	Hedgerow tree. Typical for age and species.	Good	Good	40+	C1	2.0	13.0	-
T23	Ash (Common)	On	7.0	1	Yes	250	3.0-3.0-3.0-3.0	4.0	2.0	N	EM	None	Hedgerow tree. Typical for age and species.	Good	Good	40+	C1	3.0	28.0	-
T24	Ash (Common)	On	9.0	1	Yes	230	3.0-3.0-3.0-3.0	4.0	0.0	N	M	None	Hedgerow tree. Typical for age and species.	Good	Good	40+	B1	2.8	24.0	-
T25	Ash (Common)	On	13.0	1	Yes	550	9.0-7.0-7.0-7.0	4.0	4.0	N	M	None	Hedgerow tree. Minor deadwood; reduced vitality.	Good	Good	40+	B1	6.6	137.0	-
T26	Ash (Common)	On	16.0	1	Yes	900	9.0-8.0-8.0-8.0	4.0	4.0	N	M	None	Impressive form with inonotus at majority of main unions. Ditch to the north.	Good	Fair	40+	B3	10.8	366.0	-
T27	Ash (Common)	On	10.0	4	Yes	410	3.0-3.0-3.0-3.0	4.0	0.0	N	M	None	Hedgerow tree. Typical for age and species. Minor deadwood.	Good	Good	40+	B1	4.9	76.0	-
T28	Hawthorn	On	10.0	6	Yes	220	2.0-2.0-2.0-2.0	3.0	0.0	N	M	None	Hedgerow tree. Typical for age and species.	Good	Good	40+	B1	2.6	22.0	-
T29	Ash (Common)	On	9.0	1	Yes	220	3.0-3.0-3.0-3.0	4.0	2.0	N	EM	None	Hedgerow tree. Typical for age and species.	Good	Good	40+	C1	2.6	22.0	-
T30	Ash (Common)	On	9.0	5	Yes	460	3.0-3.0-3.0-3.0	4.0	0.0	N	M	None	Hedgerow tree. Typical for age and species. Minor deadwood.	Good	Good	40+	B1	5.5	96.0	-
T31	Ash (Common)	On	13.0	1	Yes	600	7.0-7.0-7.0-6.0	4.0	3.0	N	M	None	Hedgerow tree. Minor deadwood; ivy clad. Ditch to the north.	Good	Good	40+	B1	7.2	163.0	-
T32	Oak (English)	On	10.0	1	Yes	500	2.0-2.0-2.0-2.0	4.0	0.0	N	M	None	Hedgerow tree. Reduced vitality; minimal remaining crown. Deadwood and ivy clad.	Fair	Good	40+	B3	6.0	113.0	-



Ref	Species	On/off site	Height (m)	No. of stems	Est diam?	Calc. / actual stem dia. (mm)	Crown radii (m) N-E-S-W	Av. low crown height (m)	1st branch ht (m)	1st branch dir.	Life stage	Special importance	General observations	Health & vitality	Structural condition	Estimated remaining contribution (Years)	BS 5837 Category	RPA radius (m)	RPA m <sup>2</sup>	Veteran / ancient tree buffer(m)
T33	Ash (Common)	On	10.0	2	Yes	390	5.0-6.0-5.0-6.0	4.0	0.0	N	M	None	Hedgerow tree. Typical for age and species. Minor deadwood.	Good	Good	40+	B1	4.7	69.0	-
T34	Ash (Common)	On	7.0	1	Yes	210	2.0-2.0-2.0-2.0	3.0	1.5	N	EM	None	Hedgerow tree.	Fair	Good	20+	C1	2.5	20.0	-
T35	Ash (Common)	On	9.0	1	Yes	400	1.0-2.0-3.0-2.0	6.0	1.0	S	M	None	Recent collapse of leading stem from main union. Remaining stem provides good habitat.	Fair	Poor	10+	C3	4.8	72.0	-
T36	Ash (Common)	On	9.0	2	Yes	480	7.0-6.0-5.0-3.0	4.0	3.0	N	EM	None	Hedgerow tree; in decline with symptoms of ash dieback.	Fair	Fair	20+	C1	5.8	104.0	-
T37	Ash (Common)	On	10.0	6	Yes	930	7.0-6.0-6.0-6.0	4.0	3.0	N	EM	None	Hedgerow tree. Ditch to the north	Good	Fair	40+	B1	11.2	391.0	-
T38	Ash (Common)	On	7.0	1	Yes	250	3.0-3.0-3.0-3.0	4.0	2.0	N	EM	None	Hedgerow tree. Typical for age and species.	Good	Good	40+	C1	3.0	28.0	-
T39	Oak (English)	On	14.0	1	Yes	900	8.0-7.0-8.0-8.0	4.0	2.0	N	M	None	Full crown; ditch to the east. Typical for age and species.	Good	Good	40+	A1	10.8	366.0	-
T40	Ash (Common)	Off	10.0	1	Yes	400	3.0-3.0-3.0-3.0	0.0	0.0	None	EM	None	Off-site tree on railway embankment; cursory inspection from site boundary	Good	Fair	20+	B1	4.8	72.0	-
T41	Ash (Common)	On	10.0	1	Yes	400	4.0-4.0-3.5-4.0	3.0	0.0	None	EM	None	Adjacent to access; main stem splits @4m into 3x scaffold limbs; ivy to main stem has been secured	Good	Fair	20+	B1	4.8	72.0	-
T42	Ash (Common)	On	12.0	1	Yes	450	4.5-4.5-4.5-4.0	3.0	3.0	W	EM	None	Adjacent to access; bark damage & associated decay to S of root collar with good reaction growth	Good	Fair	20+	B1	5.4	92.0	-
T43	Ash (Common)	On	7.0	1	Yes	220	2.0-2.0-2.0-2.0	2.0	3.0	N	EM	None	Hedgerow tree. In severe decline.	Fair	Fair	10+	C1	2.6	22.0	-
T44	Ash (Common)	On	7.0	1	Yes	220	2.0-2.0-2.0-2.0	2.0	3.0	N	EM	None	Hedgerow tree. In decline.	Fair	Good	20+	C1	2.6	22.0	-
T45	Ash (Common)	On	8.0	1	Yes	180	2.0-2.0-2.0-2.0	1.0	1.0	N	SM	None	Hedgerow tree. Typical for age and species.	Good	Good	40+	C1	2.2	15.0	-
T46	Willow (Crack)	On	13.0	7	Yes	610	12.0-9.0-4.0-14.0	3.0	0.0	N	LM	None	Collapsed willow with phoenix growth. Veteran-type features. Ditch to the south.	Good	Poor	40+	B3	7.3	168.0	-
T47	Oak (English)	Off	12.0	1	Yes	450	6.0-6.0-5.0-5.0	3.0	2.0	SW	SM	None	Off-site tree on railway side; main stem splits @6m into 2x scaffold limbs	Good	Fair	20+	B1	5.4	92.0	-



Ref	Species	On/off site	Height (m)	No. of stems	Est diam?	Calc. / actual stem dia. (mm)	Crown radii (m) N-E-S-W	Av. low crown height (m)	1st branch ht (m)	1st branch dir.	Life stage	Special importance	General observations	Health & vitality	Structural condition	Estimated remaining contribution (Years)	BS 5837 Category	RPA radius (m)	RPA m <sup>2</sup>	Veteran / ancient tree buffer(m)
T48	Maple (Field)	On	7.0	1	Yes	250	4.0-4.0-4.0-3.0	4.0	3.0	N	EM	None	Hedgerow tree. Crown lifted over track.	Good	Good	40+	B1	3.0	28.0	-
T49	Ash (Common)	On	7.0	1	Yes	220	3.0-3.0-3.0-3.0	3.0	3.0	N	EM	None	Hedgerow tree. Typical for age and species. Minor deadwood.	Good	Good	40+	C1	2.6	22.0	-
T50	Ash (Common)	On	12.0	1	Yes	350	5.0-5.0-5.0-5.0	2.0	4.0	N	EM	None	Hedgerow tree. Typical for age and species. Minor deadwood.	Good	Good	40+	B1	4.2	55.0	-
T51	Oak (English)	On	16.0	1	Yes	800	10.0-10.0-10.0-10.0	3.0	2.0	N	M	None	Twin stem from 2m; full crown. Typical for age and species. Crown lifted over track.	Good	Good	40+	A1	9.6	290.0	-
T52	Ash (Common)	On	7.0	1	Yes	180	2.0-2.0-2.0-2.0	1.0	1.0	N	SM	None	Hedgerow tree. Typical for age and species.	Good	Good	40+	C1	2.2	15.0	-
T53	Ash (Common)	On	11.0	3	Yes	170	3.0-3.0-3.0-2.0	4.0	3.0	N	EM	None	Hedgerow tree. Minor deadwood; crown lifted over track. Ditch to the north.	Good	Good	40+	B1	2.0	13.0	-
T54	Ash (Common)	On	12.0	1	Yes	220	4.0-4.0-4.0-4.0	3.0	3.0	N	EM	None	Hedgerow tree. Reduced vitality; crown lifted over track. Ditch to the north.	Fair	Good	40+	B1	2.6	22.0	-
T55	Ash (Common)	On	9.0	2	Yes	410	5.0-5.0-5.0-5.0	3.0	4.0	N	EM	None	Hedgerow tree. Typical for age and species. Minor deadwood	Good	Good	40+	B1	4.9	76.0	-
T56	Ash (Common)	On	12.0	2	Yes	240	4.0-4.0-4.0-4.0	3.0	3.0	N	EM	None	Hedgerow tree. Reduced vitality; symptoms of ash dieback; crown lifted over track. Ditch to the north.	Fair	Good	40+	C1	2.9	26.0	-
T57	Maple (Field)	On	7.0	1	Yes	210	3.0-3.0-3.0-2.0	3.0	1.0	N	EM	None	Hedgerow tree. Crown lifted over track. Ditch to the east.	Good	Good	40+	B1	2.5	20.0	-
T58	Maple (Field)	On	6.0	1	Yes	150	3.0-3.0-3.0-2.0	3.0	1.0	N	EM	None	Hedgerow tree. Crown lifted over track. Ditch to the east.	Good	Good	40+	B1	1.8	10.0	-
T59	Ash (Common)	On	9.0	1	Yes	220	3.0-3.0-3.0-2.0	4.0	3.0	N	EM	None	Hedgerow tree. Minor deadwood; crown lifted over track.	Good	Good	40+	B1	2.6	22.0	-
T60	Ash (Common)	On	9.0	1	Yes	340	3.0-3.0-3.0-3.0	4.0	3.0	N	EM	None	Hedgerow tree. Typical for age and species. Minor deadwood.	Good	Good	40+	B1	4.1	52.0	-
T61	Maple (Field)	On	7.0	1	Yes	210	3.0-2.0-3.0-2.0	3.0	1.0	N	EM	None	Hedgerow tree. Crown lifted over track. Ditch to the east.	Good	Good	40+	B1	2.5	20.0	-
T62	Ash (Common)	On	9.0	1	Yes	200	2.0-2.0-2.0-2.0	4.0	3.0	N	EM	None	Hedgerow tree. Typical for age and species. Minor deadwood.	Good	Good	40+	B1	2.4	18.0	-



Ref	Species	On/off site	Height (m)	No. of stems	Est diam?	Calc. / actual stem dia. (mm)	Crown radii (m) N-E-S-W	Av. low crown height (m)	1st branch ht (m)	1st branch dir.	Life stage	Special importance	General observations	Health & vitality	Structural condition	Estimated remaining contribution (Years)	BS 5837 Category	RPA radius (m)	RPA m <sup>2</sup>	Veteran / ancient tree buffer(m)
T63	Maple (Field)	On	7.0	1	Yes	190	3.0-2.0-3.0-2.0	2.0	1.0	N	EM	None	Hedgerow tree. Crown lifted over track. Ditch to the east.	Good	Good	40+	B1	2.3	16.0	-
T64	Cherry (Wild)	On	7.0	2	Yes	210	4.0-2.0-4.0-2.0	1.0	1.0	N	EM	None	Hedgerow tree. Crown lifted over track.	Good	Good	40+	B1	2.5	20.0	-
T65	Ash (Common)	On	7.0	1	Yes	300	5.0-5.0-5.0-5.0	4.0	3.0	N	EM	None	Hedgerow tree. Typical for age and species.	Good	Good	40+	C1	3.6	41.0	-
T66	Ash (Common)	On	7.0	2	Yes	270	3.0-3.0-3.0-3.0	4.0	3.0	N	EM	None	Hedgerow tree. Typical for age and species.	Good	Good	40+	C1	3.2	33.0	-
T67	Oak (English)	On	8.0	1	Yes	500	5.0-5.0-6.0-5.0	2.0	1.0	N	M	None	Located close to hedgerow. Large wound from historical loss of second stem.	Good	Fair	40+	B1	6.0	113.0	-
T68	Oak (English)	On	10.0	2	Yes	390	6.0-5.0-3.0-5.0	2.0	1.0	N	EM	None	One stem in severe decline. Hedgerow tree.	Fair	Fair	40+	C1	4.7	69.0	-
T69	Ash (Common)	On	8.0	1	Yes	220	4.0-4.0-4.0-4.0	4.0	2.0	W	EM	None	Located within hedgerow. Ditch to the south. Historical storm damage.	Fair	Good	20+	C1	2.6	22.0	-
T70	Ash (Common)	On	6.0	1	Yes	220	4.0-4.0-4.0-4.0	4.0	2.0	W	EM	None	Located within hedgerow. Ditch to the south. Slight decline.	Fair	Good	20+	C1	2.6	22.0	-
T71	Oak (English)	On	4.0	1	Yes	200	3.0-2.0-3.0-2.0	2.0	2.0	E	M	None	Part of hedgerow.	Good	Good	40+	C1	2.4	18.0	-
T72	Oak (English)	On	16.0	1	Yes	900	5.0-6.0-8.0-6.0	5.0	2.0	S	M	None	Part of hedgerow. Crown lifted clear of field by 5m.	Good	Good	40+	B1	10.8	366.0	-
T73	Oak (English)	On	16.0	1	Yes	750	7.0-8.0-8.0-7.0	6.0	5.0	N	M	None	Part of hedgerow. Crown lifted clear of both fields by 5m. Ivy clad	Good	Good	40+	B1	9.0	254.0	-
T74	Ash (Common)	On	13.0	1	Yes	400	4.0-4.0-4.0-4.0	4.0	3.0	S	M	None	Located within hedgerow. Typical for age and species.	Good	Fair	40+	C1	4.8	72.0	-
T75	Ash (Common)	On	12.0	1	Yes	300	4.0-4.0-4.0-4.0	4.0	3.0	S	EM	None	Located within hedgerow. Slight decline. Ditch to the south.	Fair	Good	40+	C1	3.6	41.0	-
T76	Oak (English)	On	11.0	1	Yes	680	4.0-4.0-4.0-4.0	3.0	2.0	E	M	None	Part of hedgerow. Stem has slight lean.	Good	Good	40+	B1	8.2	209.0	-
T77	Ash (Common)	On	6.0	1	Yes	500	3.0-4.0-3.0-4.0	4.0	3.0	S	EM	None	Located within hedgerow. Ditch to the north.	Fair	Good	20+	C1	6.0	113.0	-
T78	Willow (Crack)	On	16.0	2	Yes	860	6.0-8.0-8.0-8.0	4.0	1.0	E	M	None	Located within hedgerow. Minor deadwood in crown. Ditch to the north.	Good	Good	40+	A1	10.3	335.0	-



Ref	Species	On/off site	Height (m)	No. of stems	Est diam?	Calc. / actual stem dia. (mm)	Crown radii (m) N-E-S-W	Av. low crown height (m)	1st branch ht (m)	1st branch dir.	Life stage	Special importance	General observations	Health & vitality	Structural condition	Estimated remaining contribution (Years)	BS 5837 Category	RPA radius (m)	RPA m <sup>2</sup>	Veteran / ancient tree buffer(m)
T79	Elm (Wych)	Off	5.0	1	Yes	180	2.0-3.0-2.0-3.0	2.0	0.0	W	EM	None	Located within hedgerow. Ditch to the south.	Fair	Good	20+	C1	2.2	15.0	-
T80	Ash (Common)	On	10.0	1	Yes	300	5.0-4.0-5.0-4.0	4.0	3.0	W	EM	None	Located within hedgerow. Ditch to the north. Inonotus bracket at 3m.	Good	Fair	20+	C1	3.6	41.0	-
T81	Elm (Wych)	Off	7.0	1	Yes	200	2.0-2.0-2.0-2.0	3.0	0.0	W	EM	None	Located within hedgerow. Ditch to the south.	Good	Good	20+	C1	2.4	18.0	-
T82	Elm (Wych)	Off	5.0	1	Yes	160	2.0-2.0-2.0-2.0	3.0	0.0	W	EM	None	Located within hedgerow. Ditch to the south.	Good	Good	20+	C1	2.0	12.0	-
T83	Oak (English)	On	16.0	1	Yes	750	6.0-6.0-6.0-6.0	5.0	3.0	S	M	None	Part of hedgerow. Crown lifted by 5m. Ditch to the north.	Good	Good	40+	B1	9.0	254.0	-
T84	Ash (Common)	Off	12.0	2	Yes	490	4.5-4.0-4.0-4.0	3.0	0.0	None	SM	None	Off-site multi stemmed tree on railway embankment & field boundary	Good	Fair	20+	B1	5.9	109.0	-
T85	Ash (Common)	On	10.0	1	Yes	280	4.0-4.0-5.0-4.0	5.0	3.0	W	EM	None	Located within hedgerow. Ditch to the south. Slight decline.	Fair	Good	20+	C1	3.3	35.0	-
T86	Oak (English)	On	8.0	1	Yes	400	4.0-3.0-4.0-3.5	3.0	3.0	N	SM	None	Main stem splits @2.5m into 2x stems; large stump to N of stem	Good	Fair	20+	C1	4.8	72.0	-
T87	Ash (Common)	On	12.0	1	Yes	350	3.0-3.0-3.0-3.0	3.5	3.0	N	SM	None	Typical for age & species	Good	Fair	20+	C1	4.2	55.0	-
T88	Ash (Common)	On	10.0	1	Yes	350	4.0-3.0-3.5-3.0	3.5	2.5	N	SM	None	Typical for age & species	Good	Fair	20+	C1	4.2	55.0	-
T89	Apple	On	10.0	2	Yes	500	4.0-3.0-4.0-4.0	0.0	0.0	None	M	None	Established in wide verge adjacent to track; historical minor storm damage to S of crown @3m; does not appear to have been pruned at all	Good	Fair	40+	A1	6.0	113.0	-
T90	Hawthorn	Off	6.0	20	Yes	490	2.0-2.0-2.0-2.0	0.0	0.0	None	SM	None	Off-site tree on railway embankment	Good	Fair	20+	B1	5.9	109.0	-
T91	Ash (Common)	Off	10.0	15	Yes	770	3.0-3.0-3.0-3.0	0.0	0.0	None	SM	None	Off-site multi stemmed tree on railway embankment	Good	Fair	20+	B1	9.2	268.0	-
T92	Maple (Norway)	On	9.0	1	Yes	380	3.0-3.0-3.0-3.0	3.0	0.0	None	SM	None	Main stem splits @1m into 2x stems; dia. est. @0.25m	Good	Fair	20+	C1	4.5	65.0	-
T93	Ash (Common)	Off	10.0	15	Yes	770	3.0-3.0-3.0-3.0	0.0	0.0	None	SM	None	Off-site multi stemmed tree on railway embankment	Good	Fair	20+	B1	9.2	268.0	-
T94	Beech (Common)	On	5.0	1	Yes	120	1.5-1.0-1.0-1.0	2.5	1.5	S	Y	None	Ditch to N; not plotted on topo	Good	Fair	20+	C1	1.5	7.0	-



Ref	Species	On/off site	Height (m)	No. of stems	Est diam?	Calc. / actual stem dia. (mm)	Crown radii (m) N-E-S-W	Av. low crown height (m)	1st branch ht (m)	1st branch dir.	Life stage	Special importance	General observations	Health & vitality	Structural condition	Estimated remaining contribution (Years)	BS 5837 Category	RPA radius (m)	RPA m <sup>2</sup>	Veteran / ancient tree buffer(m)
T95	Lime (Common)	On	5.0	1	Yes	150	2.0-1.5-1.0-1.5	1.5	1.5	N	Y	None	Main stem splits @1m into 2; dia. est. @0.25m; ditch to N; not plotted on topo	Good	Fair	20+	C1	1.8	10.0	-
T96	Ash (Common)	On	10.0	1	Yes	350	4.0-3.0-3.0-3.0	3.5	3.0	N	SM	None	Water shoots triggered throughout crown; minor twiggy dieback	Fair	Fair	20+	C1	4.2	55.0	-
T97	Oak (English)	On	16.0	1	Yes	900	6.0-6.0-7.0-7.0	3.0	3.0	SW	M	None	Main stem splits @3m into 2 scaffold limbs; cranked scaffold & lateral limbs throughout crown; historical storm damage to mid crown + associated moderate sized deadwood; bark loss & decay; visible cavity to W scaffold @4m; good habitat value; ditch to E	Good	Fair	40+	A1	10.8	366.0	-
T98	Ash (Common)	On	8.0	1	Yes	350	4.0-3.0-3.0-2.5	3.0	0.0	None	SM	None	Main stem splits @1.5m into 2 stems which form a cohesive crown	Good	Fair	20+	C1	4.2	55.0	-
T99	Maple (Norway)	On	8.0	1	Yes	350	3.0-3.0-3.0-3.0	3.0	2.0	S	SM	None	Sub dominant limb to S (1st sig. limb) which forms part of a cohesive crown	Good	Fair	20+	C1	4.2	55.0	-
T100	Ash (Common)	On	12.0	1	Yes	350	3.0-2.0-3.0-3.0	3.0	2.0	W	SM	None	Main stem splits @2.5m into 2 stems which form a cohesive crown; ditch to N	Good	Fair	20+	C1	4.2	55.0	-
T101	Elm (English)	Off	10.0	20	Yes	540	3.0-3.0-3.0-3.0	0.0	0.0	None	SM	None	Off-site multi stemmed tree on railway embankment	Good	Fair	20+	B1	6.5	132.0	-
T102	Maple (Norway)	On	10.0	1	Yes	350	3.0-3.0-3.0-3.0	3.0	2.5	W	SM	None	Main stem splits @3m into 3x scaffold limbs	Good	Fair	20+	C1	4.2	55.0	-
T103	Chestnut (Horse)	On	6.5	1	Yes	300	2.5-2.5-2.0-2.0	1.5	0.0	None	SM	None	Main stem splits @2.5m into multiple stems which form a cohesive crown; ditch to S	Good	Fair	20+	C1	3.6	41.0	-
T104	Ash (Common)	On	12.0	1	Yes	350	3.0-3.0-3.0-3.0	3.0	2.0	N	SM	None	Main stem splits @2m into 2 stems which form a cohesive crown; ditch to N	Good	Fair	20+	C1	4.2	55.0	-
T105	Maple (Norway)	On	10.0	1	Yes	300	3.0-3.0-3.0-3.0	3.0	2.5	SW	SM	None	Main stem splits @3m into 3x scaffold limbs	Good	Fair	20+	C1	3.6	41.0	-
T106	Ash (Common)	On	10.0	1	Yes	250	3.0-2.0-2.0-2.5	2.0	2.0	W	SM	None	Typical for age & species; ditch to N	Good	Fair	20+	C1	3.0	28.0	-



Ref	Species	On/off site	Height (m)	No. of stems	Est diam?	Calc. / actual stem dia. (mm)	Crown radii (m) N-E-S-W	Av. low crown height (m)	1st branch ht (m)	1st branch dir.	Life stage	Special importance	General observations	Health & vitality	Structural condition	Estimated remaining contribution (Years)	BS 5837 Category	RPA radius (m)	RPA m <sup>2</sup>	Veteran / ancient tree buffer(m)
T107	Maple (Norway)	On	10.0	1	Yes	300	3.0-3.0-3.0-3.0	3.0	3.0	N	SM	None	Main stem splits @3m into 3x scaffold limbs	Good	Fair	20+	C1	3.6	41.0	-
T108	Maple (Norway)	On	9.0	1	Yes	300	3.0-3.0-3.0-3.0	3.0	2.5	SW	SM	None	Main stem splits @3m into 2x scaffold limbs	Good	Fair	20+	C1	3.6	41.0	-
T109	Chestnut (Horse)	On	7.0	1	Yes	300	2.5-2.5-2.5-2.5	1.5	0.0	None	SM	None	Main stem splits @2m into multiple stems which form a cohesive crown; ditch to S	Good	Fair	20+	C1	3.6	41.0	-
T110	Oak (English)	On	6.0	1	Yes	300	2.5-3.0-2.5-2.5	1.5	0.0	None	SM	None	Main stem splits @1.5m into 3 stems which form a cohesive crown; ditch to S	Good	Fair	20+	C1	3.6	41.0	-
T111	Maple (Norway)	On	10.0	1	Yes	350	3.0-3.0-3.0-3.0	3.0	2.5	N	SM	None	Main stem splits @3m into 5x scaffold limbs	Good	Fair	20+	C1	4.2	55.0	-
T112	Beech (Common)	On	7.0	1	Yes	150	1.5-1.5-1.5-1.5	2.5	2.5	W	Y	None	Ditch to N; typical for age & species	Good	Fair	20+	C1	1.8	10.0	-
T113	Maple (Norway)	On	12.0	1	Yes	350	3.5-3.0-3.5-3.5	3.5	2.5	N	SM	None	Main stem splits @3m into 3x scaffold limbs	Good	Fair	20+	C1	4.2	55.0	-
T114	Ash (Common)	On	14.0	1	Yes	500	6.0-7.0-6.0-5.0	3.0	2.0	E	SM	None	Main stem splits @2.5m into 3 stems; ivy cover to N stem; ditch to S	Good	Fair	20+	B1	6.0	113.0	-
T115	Maple (Norway)	On	8.0	1	Yes	300	3.0-3.0-3.0-3.0	3.0	2.5	S	SM	None	Typical for age & species	Good	Fair	20+	C1	3.6	41.0	-
T116	Ash (Common)	On	13.0	1	Yes	500	6.0-7.0-6.0-6.0	3.0	2.0	S	SM	None	Main stem splits @2.5m into 4 stems; ditch to S	Good	Fair	20+	B1	6.0	113.0	-
T117	Ash (Common)	On	15.0	1	Yes	750	6.0-6.5-6.0-6.0	3.5	0.0	None	M	None	Hollowing to main stem; historical storm damage; crown formed by SM re-gen which has created an ungainly / non cohesive crown; ditch to N; good habitat value	Good	Fair	20+	B3	9.0	254.0	-
T118	Ash (Common)	On	7.0	2	Yes	280	3.0-3.0-3.0-3.0	3.0	0.0	None	SM	None	Twin stemmed forming a cohesive crown	Good	Fair	20+	C1	3.3	35.0	-
T119	Maple (Norway)	On	7.5	1	Yes	250	3.0-2.5-3.0-3.0	3.0	3.0	N	SM	None	Typical for age & species	Good	Fair	20+	C1	3.0	28.0	-
T120	Beech (Common)	On	7.0	1	Yes	300	3.0-3.0-2.5-2.5	2.5	1.0	N	SM	None	Ditch to N; main stem splits @1.5m into 3 stems	Good	Fair	20+	C1	3.6	41.0	-
T121	Maple (Norway)	On	4.5	1	Yes	150	2.0-2.0-2.0-2.0	2.5	2.5	NE	SM	None	Typical for age & species; not plotted on topo	Good	Fair	20+	C1	1.8	10.0	-



Ref	Species	On/off site	Height (m)	No. of stems	Est diam?	Calc. / actual stem dia. (mm)	Crown radii (m) N-E-S-W	Av. low crown height (m)	1st branch ht (m)	1st branch dir.	Life stage	Special importance	General observations	Health & vitality	Structural condition	Estimated remaining contribution (Years)	BS 5837 Category	RPA radius (m)	RPA m <sup>2</sup>	Veteran / ancient tree buffer(m)
T122	Oak (English)	On	5.0	1	Yes	110	1.0-1.0-1.0-1.0	1.5	1.5	W	Y	None	Typical for age & species; ditch to S; not plotted on topo	Good	Fair	20+	C1	1.3	5.0	-
T123	Maple (Norway)	On	6.5	1	Yes	220	2.5-2.5-2.5-2.5	2.5	2.5	N	SM	None	Main stem splits @2.5m into 2x stems	Good	Fair	20+	C1	2.6	22.0	-
T124	Ash (Common)	On	6.5	1	Yes	250	3.0-3.0-3.0-2.5	3.0	2.5	W	SM	None	Main stem splits @3m into 3x scaffold limbs	Good	Fair	20+	C1	3.0	28.0	-
T125	Rowan	On	5.0	1	Yes	100	1.0-1.0-1.0-1.0	1.5	1.5	W	Y	None	Typical for age & species; ditch to N; not plotted on topo	Good	Fair	20+	C1	1.3	5.0	-
T126	Ash (Common)	On	8.0	1	Yes	300	3.5-4.0-4.0-4.0	3.0	2.5	S	SM	None	Main stem splits @3.5m into 3x scaffold limbs	Good	Fair	20+	C1	3.6	41.0	-
T127	Maple (Norway)	On	6.0	1	Yes	200	3.0-3.0-2.5-3.0	2.5	2.5	N	SM	None	Main stem splits @2.5m into 3x stems	Good	Fair	20+	C1	2.4	18.0	-
T128	Maple (Norway)	On	6.5	1	Yes	200	2.5-3.0-2.5-2.5	2.5	2.5	W	SM	None	Main stem splits @3m into 4x stems	Good	Fair	20+	C1	2.4	18.0	-
T129	Ash (Common)	On	12.0	1	Yes	500	6.0-6.0-6.0-5.0	3.0	2.5	S	EM	None	Main stem splits @2.5m into 3 stems; light ivy cover to main & W stem	Good	Fair	20+	B1	6.0	113.0	-
T130	Lime (Common)	On	8.0	4	Yes	290	3.0-3.0-3.0-3.0	2.0	0.0	None	SM	None	Ditch to S; 4 stems which form a cohesive crown	Good	Fair	20+	C1	3.5	38.0	-
T131	Ash (Common)	On	8.0	1	Yes	300	3.5-3.5-3.5-3.5	2.5	2.0	SW	SM	None	Typical for age & species	Good	Fair	20+	C1	3.6	41.0	-
T132	Ash (Common)	On	9.0	3	Yes	320	3.0-3.0-3.0-3.0	3.0	0.0	None	SM	None	Tri stemmed forming a cohesive crown	Good	Fair	20+	C1	3.8	46.0	-
T133	Maple (Norway)	On	8.0	1	Yes	250	3.0-3.0-2.5-2.5	3.0	2.5	W	SM	None	Main stem splits @3m into 3x stems	Good	Fair	20+	C1	3.0	28.0	-
T134	Ash (Common)	On	8.0	1	Yes	300	3.0-3.5-3.0-3.0	3.0	2.5	SE	SM	None	Typical for age & species	Good	Fair	20+	C1	3.6	41.0	-
T135	Ash (Common)	On	10.0	1	Yes	250	3.0-3.0-3.0-3.0	1.5	1.5	SW	SM	None	Ditch to N; main stem splits into 2 stems @1.5m which form a cohesive crown	Good	Fair	20+	C1	3.0	28.0	-
T136	Oak (English)	On	8.0	1	Yes	450	5.0-4.0-3.5-4.0	3.0	0.0	None	SM	None	Main stem splits @2 - 3m into multiple scraps limbs creating a low spreading crown	Good	Fair	20+	B1	5.4	92.0	-
T137	Ash (Common)	On	12.0	1	Yes	350	4.0-4.0-4.0-4.0	2.5	2.0	S	SM	None	Ditch to S; typical for age & species	Good	Fair	20+	C1	4.2	55.0	-
T138	Maple (Field)	On	9.0	1	Yes	200	3.0-3.0-3.0-3.0	1.5	1.5	N	SM	None	Ditch to N; typical for age & species	Good	Fair	20+	C1	2.4	18.0	-



Ref	Species	On/off site	Height (m)	No. of stems	Est diam?	Calc. / actual stem dia. (mm)	Crown radii (m) N-E-S-W	Av. low crown height (m)	1st branch ht (m)	1st branch dir.	Life stage	Special importance	General observations	Health & vitality	Structural condition	Estimated remaining contribution (Years)	BS 5837 Category	RPA radius (m)	RPA m <sup>2</sup>	Veteran / ancient tree buffer(m)
T139	Maple (Norway)	On	4.5	1	Yes	150	3.0-2.5-2.5-3.0	2.5	3.0	N	SM	None	Main stem splits @3m into 2x stems	Good	Fair	20+	C1	1.8	10.0	-
T140	Beech (Copper)	On	8.0	1	Yes	180	1.5-1.5-1.5-1.5	1.5	1.5	N	Y	None	Ditch to N; typical for age & species	Good	Fair	20+	C1	2.2	15.0	-
T141	Chestnut (Horse)	On	6.5	1	Yes	150	2.5-2.5-2.0-2.0	1.5	1.0	SW	SM	None	Typical for age & species	Good	Fair	20+	C1	1.8	10.0	-
T142	Maple (Norway)	On	4.5	1	Yes	120	2.0-1.5-2.0-2.0	2.5	2.5	N	SM	None	Main stem splits @2.5m into 3x stems; not plotted on topo	Good	Fair	20+	C1	1.5	7.0	-
T143	Beech (Common)	On	8.0	1	Yes	200	3.0-3.0-2.5-2.5	0.5	1.5	NW	Y	None	Ditch to N; typical for age & species	Good	Fair	20+	C1	2.4	18.0	-
T144	Lime (Common)	On	8.0	1	Yes	200	3.0-3.0-3.0-3.0	0.5	1.5	N	Y	None	Ditch to N; typical for age & species	Good	Fair	20+	C1	2.4	18.0	-
T145	Ash (Common)	On	15.0	1	Yes	450	6.0-6.0-6.0-6.0	2.5	2.5	NE	SM	None	Typical for age & species	Fair	Fair	20+	C1	5.4	92.0	-
T146	Ash (Common)	On	8.0	1	Yes	280	2.5-3.0-2.0-2.0	2.5	0.0	None	SM	None	Main stem splits @2m into 2x stems	Good	Fair	20+	C1	3.3	35.0	-
T147	Oak (English)	On	7.5	1	Yes	380	3.5-3.5-2.5-3.5	3.0	2.5	W	SM	None	Main stem splits @2m into 4x stems creating a low spreading crown	Good	Fair	20+	C1	4.5	65.0	-
T148	Oak (English)	On	8.0	1	Yes	150	2.0-2.0-2.0-2.0	1.5	1.5	N	Y	None	Ditch to N; typical for age & species	Good	Fair	20+	C1	1.8	10.0	-
T149	Ash (Common)	On	9.0	1	Yes	380	4.5-4.5-4.5-4.5	2.5	2.5	S	SM	None	Twin stemmed from 1m; visible bark damage to S stem; water shoots triggered around lower S of crown	Fair	Fair	20+	C1	4.5	65.0	-
T150	Ash (Common)	On	14.0	1	Yes	750	6.0-6.0-5.0-6.0	3.0	2.5	W	M	None	Hollowing to main stem; historical storm damage which has left an ungainly / non cohesive crown; small deadwood throughout crown; ditch to N; good habitat value	Fair	Fair	20+	B3	9.0	254.0	-
T151	Ash (Common)	On	9.0	1	Yes	280	3.0-3.5-2.5-2.0	2.5	1.5	SE	SM	None	Typical for age & species	Good	Fair	20+	C1	3.3	35.0	-
T152	Oak (English)	On	7.0	1	Yes	150	2.5-2.5-2.5-2.5	1.5	1.5	N	Y	None	Ditch to N; typical for age & species	Good	Fair	20+	C1	1.8	10.0	-
T153	Elm (English)	On	9.0	2	Yes	270	3.0-3.0-3.0-3.0	2.0	0.0	None	SM	None	Twin stemmed; typical for age & species	Good	Fair	20+	C1	3.2	33.0	-
T154	Maple (Norway)	On	5.5	1	Yes	150	3.0-2.5-2.0-2.0	2.5	3.5	NE	SM	None	Main stem splits @3m into 2x stems; not plotted on topo	Good	Fair	20+	C1	1.8	10.0	-



Ref	Species	On/off site	Height (m)	No. of stems	Est diam?	Calc. / actual stem dia. (mm)	Crown radii (m) N-E-S-W	Av. low crown height (m)	1st branch ht (m)	1st branch dir.	Life stage	Special importance	General observations	Health & vitality	Structural condition	Estimated remaining contribution (Years)	BS 5837 Category	RPA radius (m)	RPA m <sup>2</sup>	Veteran / ancient tree buffer(m)
T155	Larch (Common)	On	7.0	1	Yes	150	2.5-2.5-1.5-1.5	1.5	1.5	E	Y	None	Ditch to N; typical for age & species	Good	Fair	20+	C1	1.8	10.0	-
T156	Ash (Common)	On	7.0	3	Yes	300	4.0-3.5-3.0-3.0	2.5	0.0	None	SM	None	Tri stemmed tree with a cohesive crown	Good	Fair	20+	C1	3.6	41.0	-
T157	Maple (Norway)	On	5.0	1	Yes	150	3.0-3.0-3.0-3.0	2.5	2.5	NE	SM	None	Main stem splits @2m into 3x stems; not plotted on topo	Good	Fair	20+	C1	1.8	10.0	-
T158	Ash (Common)	On	8.0	1	Yes	200	3.5-3.5-3.5-3.5	1.5	2.0	N	SM	None	Ditch to N; typical for age & species	Good	Fair	20+	C1	2.4	18.0	-
T159	Ash (Common)	On	9.0	1	Yes	350	5.0-3.5-4.0-4.0	2.5	2.5	N	SM	None	Small twiggy dieback & water shoots triggered throughout crown; recent minor storm damage to SW @3m	Fair	Fair	20+	C1	4.2	55.0	-
T160	Ash (Common)	On	14.0	1	Yes	500	6.0-6.0-6.0-5.0	3.5	2.0	W	SM	None	Main stem splits @2m into 3 stems	Good	Fair	20+	B1	6.0	113.0	-
T161	Oak (English)	On	7.0	1	Yes	250	2.5-3.0-3.0-3.0	3.0	3.0	W	SM	None	Noon progressive lean to N; main stem splits @3m into 2x stems	Good	Fair	20+	C1	3.0	28.0	-
T162	Maple (Norway)	On	6.0	1	Yes	250	3.0-3.0-3.0-3.0	2.5	2.5	NE	SM	None	Main stem splits @3m into 4x stems	Good	Fair	20+	C1	3.0	28.0	-
T163	Chestnut (Horse)	On	10.0	1	Yes	350	3.0-3.0-2.5-2.5	1.5	1.5	E	SM	None	Ditch to N; typical for age & species	Good	Fair	20+	C1	4.2	55.0	-
T164	Maple (Norway)	On	7.0	1	Yes	220	3.0-3.0-3.0-3.0	2.5	2.5	NE	SM	None	Main stem splits @3m into 2x stems	Good	Fair	20+	C1	2.6	22.0	-
T165	Pine (Scots)	On	4.0	1	Yes	70	1.0-1.0-1.0-1.0	1.5	1.5	W	Y	None	Ditch to N; sparse crown; not plotted on topo	Fair	Fair	10+	C1	0.8	2.0	-
T166	Oak (English)	On	12.0	1	Yes	200	3.0-3.0-3.0-3.0	1.0	1.0	S	SM	None	Ditch to N; typical for age & species	Good	Fair	20+	C1	2.4	18.0	-
T167	Ash (Common)	On	12.0	1	Yes	450	5.0-4.5-5.0-5.0	3.5	2.0	SE	SM	None	Main stem splits @2m into 4 stems	Good	Fair	20+	B1	5.4	92.0	-
T168	Ash (Common)	On	13.0	1	Yes	400	5.0-6.0-5.0-4.0	3.5	2.0	W	SM	None	Main stem splits @2m into 3 stems	Good	Fair	20+	B1	4.8	72.0	-
T169	Elm (English)	On	13.0	1	Yes	400	5.0-5.0-5.0-5.0	2.0	0.25	S	EM	None	Sub dominant stem to S; good vigour throughout crown	Good	Fair	20+	B1	4.8	72.0	-
T170	Maple (Norway)	On	8.0	2	Yes	280	3.0-3.0-3.0-3.0	2.5	2.5	N	SM	None	Twin stemmed tree	Good	Fair	20+	C1	3.3	35.0	-



Ref	Species	On/off site	Height (m)	No. of stems	Est diam?	Calc. / actual stem dia. (mm)	Crown radii (m) N-E-S-W	Av. low crown height (m)	1st branch ht (m)	1st branch dir.	Life stage	Special importance	General observations	Health & vitality	Structural condition	Estimated remaining contribution (Years)	BS 5837 Category	RPA radius (m)	RPA m <sup>2</sup>	Veteran / ancient tree buffer(m)
T171	Oak (English)	On	10.0	2	Yes	850	8.0-7.0-6.0-6.0	2.5	0.0	None	M	None	Twin stemmed forming a cohesive & wide spreading crown	Good	Fair	40+	B1	10.2	327.0	-
T172	Oak (English)	On	5.5	1	Yes	220	3.5-3.0-2.0-2.0	2.5	3.0	N	SM	None	Heavily cranked main stem which splits @3m into 4x stems	Good	Fair	20+	C1	2.6	22.0	-
T173	Ash (Common)	On	12.0	1	Yes	350	4.0-4.0-4.0-4.0	2.5	0.0	None	SM	None	Twin stemmed from 1m; dia. est. @0.5m	Good	Fair	20+	C1	4.2	55.0	-
T174	Maple (Norway)	On	7.0	1	Yes	220	3.5-3.0-2.5-2.5	2.5	2.5	N	SM	None	Main stem splits @3m into 2x stems	Good	Fair	20+	C1	2.6	22.0	-
T175	Maple (Norway)	On	7.0	1	Yes	200	3.5-2.5-2.5-2.5	2.5	2.5	NW	SM	None	Main stem splits @2.5m into 3x stems	Good	Fair	20+	C1	2.4	18.0	-
T176	Maple (Norway)	On	6.0	1	Yes	200	3.5-3.0-2.5-3.0	2.5	2.0	N	SM	None	Main stem splits @2.5m into 3x stems	Good	Fair	20+	C1	2.4	18.0	-
T177	Lime (Common)	On	7.0	1	Yes	200	2.5-3.0-2.5-2.5	2.0	0.0	None	SM	None	Main stem splits @1m into 3; dia. est. @0.5m	Good	Fair	20+	C1	2.4	18.0	-
T178	Maple (Norway)	On	5.0	1	Yes	150	3.0-3.0-3.0-3.0	2.5	2.0	E	SM	None	Typical for age & species	Good	Fair	20+	C1	1.8	10.0	-
T179	Oak (English)	On	8.0	1	Yes	220	3.5-3.0-3.0-3.0	2.5	2.5	NW	SM	None	Main stem splits @3m into 4x stems	Good	Fair	20+	C1	2.6	22.0	-
T180	Chestnut (Horse)	On	9.0	1	Yes	300	3.0-3.0-3.0-2.5	2.5	2.5	W	Y	None	Ditch to N; typical for age & species	Good	Fair	20+	C1	3.6	41.0	-
T181	Chestnut (Horse)	On	8.0	1	Yes	200	2.0-1.5-1.5-1.5	2.5	1.5	S	Y	None	Ditch to N; typical for age & species; not plotted on topo	Good	Fair	20+	C1	2.4	18.0	-
T182	Beech (Common)	On	6.0	1	Yes	120	2.0-2.0-1.5-1.0	1.5	1.5	SW	Y	None	Ditch to N; typical for age & species	Good	Fair	20+	C1	1.5	7.0	-
T183	Ash (Common)	On	13.0	1	Yes	450	5.0-5.0-5.0-6.0	2.5	2.5	W	SM	None	Typical for age & species	Good	Fair	20+	B1	5.4	92.0	-
T184	Oak (English)	On	8.0	1	None	330	5.0-5.0-4.5-4.0	1.5	2.0	W	SM	None	No significant defects	Good	Good	40+	B1	3.9	49.0	-
T185	Ash (Common)	On	6.0	1	Yes	220	4.0-4.0-4.0-2.0	2.0	1.5	S	SM	None	No significant defects. Ditch to east	Good	Good	20+	B1	2.6	22.0	-
T186	Ash (Common)	On	6.0	2	Yes	330	5.0-4.0-4.0-3.0	2.0	2.0	W	SM	None	Twin stem at base. Ditch to east	Good	Good	20+	B1	3.9	49.0	-
T187	Ash (Common)	On	10.0	1	Yes	280	5.0-4.0-5.0-4.0	2.0	2.5	W	SM	None	Ditch to south. Possible early signs of ash dieback in crown	Fair	Good	10+	C1	3.3	35.0	-
T188	Ash (Common)	On	8.0	1	Yes	250	3.0-4.0-4.0-4.0	2.0	2.5	W	SM	None	Ditch to north. Signs of ash dieback in crown	Fair	Good	10+	C1	3.0	28.0	-



Ref	Species	On/off site	Height (m)	No. of stems	Est diam?	Calc. / actual stem dia. (mm)	Crown radii (m) N-E-S-W	Av. low crown height (m)	1st branch ht (m)	1st branch dir.	Life stage	Special importance	General observations	Health & vitality	Structural condition	Estimated remaining contribution (Years)	BS 5837 Category	RPA radius (m)	RPA m <sup>2</sup>	Veteran / ancient tree buffer(m)
T189	Ash (Common)	On	8.0	1	Yes	280	4.0-4.0-4.0-4.0	2.0	2.0	NW	SM	None	Ditch to south	Good	Good	20+	B1	3.3	35.0	-
T190	Ash (Common)	On	11.0	1	Yes	320	5.0-5.0-5.0-5.0	2.0	2.5	W	EM	None	No significant defects	Good	Good	20+	B1	3.8	46.0	-
T191	Ash (Common)	On	9.0	1	Yes	320	5.0-5.0-4.0-5.0	2.0	2.0	E	SM	None	Shallow ditch to south	Good	Good	20+	B1	3.8	46.0	-
T192	Ash (Common)	On	9.0	1	Yes	270	5.0-5.0-3.0-5.0	2.0	3.0	E	SM	None	Shallow ditch to south	Good	Good	20+	B1	3.2	33.0	-
T193	Ash (Common)	On	9.0	1	Yes	270	5.0-5.0-2.5-5.0	2.0	3.0	W	SM	None	Shallow ditch to south	Good	Good	20+	B1	3.2	33.0	-
T194	Elm (English)	On	10.0	1	Yes	400	2.5-5.0-3.0-4.0	1.5	1.5	E	EM	None	Dead stem has been leant against the main stem; good vigour throughout crown	Good	Fair	20+	B1	4.8	72.0	-
T195	Ash (Common)	On	8.0	1	Yes	500	5.0-5.0-4.0-5.0	2.5	2.5	W	M	None	Signs of ash dieback in crown. Inonotus hispidus west at 2m. Decay and open cavity in stem from 2m to top of tree. Habitat potential	Fair	Fair	10+	C3	6.0	113.0	-
T196	Ash (Common)	On	9.0	2	Yes	180	2.0-2.5-2.0-2.0	3.0	0.0	None	SM	None	Twin stemmed forming a cohesive crown	Fair	Fair	20+	C1	2.2	15.0	-
T197	Ash (Common)	On	12.0	1	Yes	800	6.0-6.0-5.0-6.0	2.5	0.0	None	M	None	Decayed mature bole with SM re-gen forming a new crown; visible woodpecker activity; hollowing & decaying timber volume to main stem; good habitat value	Fair	Fair	20+	B3	9.6	290.0	-
T198	Ash (Common)	On	8.0	1	Yes	280	3.0-3.0-3.0-3.0	2.5	2.0	S	SM	None	Signs of ash dieback in crown. Asymmetric lower crown over track to north	Fair	Good	10+	C1	3.3	35.0	-
T199	Ash (Common)	On	13.0	2	Yes	450	5.0-7.0-5.0-6.0	3.0	0.0	None	SM	None	Twin stemmed forming a cohesive crown	Good	Fair	20+	C1	5.4	92.0	-
T200	Ash (Common)	On	9.0	1	Yes	250	3.5-3.0-3.0-3.0	3.0	2.5	N	SM	None	Main stem splits @2.5m into 3 stems	Good	Fair	20+	C1	3.0	28.0	-
T201	Ash (Common)	On	9.0	1	Yes	300	4.0-3.0-2.0-3.0	2.5	2.0	W	SM	None	Ditch to south. Signs of ash dieback in crown	Fair	Good	10+	C1	3.6	41.0	-
T202	Ash (Common)	On	8.0	1	Yes	350	3.0-3.0-3.0-3.0	3.0	3.0	W	SM	None	Main stem splits @3m into 2 stems	Good	Fair	20+	C1	4.2	55.0	-
T203	Oak (English)	On	11.0	1	Yes	400	6.0-6.0-5.0-6.0	2.0	2.5	E	EM	None	Ditch to south	Good	Good	40+	B1	4.8	72.0	-
T204	Ash (Common)	On	9.0	2	Yes	290	3.5-3.0-3.0-3.0	1.5	0.0	None	SM	None	Twin stemmed forming a cohesive crown	Good	Fair	20+	C1	3.5	38.0	-



Ref	Species	On/off site	Height (m)	No. of stems	Est diam?	Calc. / actual stem dia. (mm)	Crown radii (m) N-E-S-W	Av. low crown height (m)	1st branch ht (m)	1st branch dir.	Life stage	Special importance	General observations	Health & vitality	Structural condition	Estimated remaining contribution (Years)	BS 5837 Category	RPA radius (m)	RPA m <sup>2</sup>	Veteran / ancient tree buffer(m)
T205	Ash (Common)	On	8.0	3	Yes	320	4.0-3.0-3.0-3.0	1.5	0.0	None	SM	None	Tri stemmed forming a cohesive crown	Good	Fair	20+	C1	3.8	46.0	-
T206	Ash (Common)	On	9.0	1	Yes	250	4.5-3.5-3.5-3.5	2.0	2.0	N	SM	None	Main stem splits @2m into 3 limbs	Good	Fair	20+	C1	3.0	28.0	-
T207	Ash (Common)	On	9.0	1	Yes	350	3.0-4.0-3.5-4.0	2.5	3.0	NW	SM	None	Main stem splits @3m into 3 limbs	Good	Fair	20+	C1	4.2	55.0	-
T208	Oak (English)	On	8.0	1	Yes	380	4.0-4.0-4.0-4.0	2.5	2.0	S	SM	None	Main stem splits @3m into several limbs forming a cohesive crown	Good	Fair	20+	C1	4.5	65.0	-
T209	Oak (English)	On	10.0	1	Yes	400	5.0-4.0-4.5-4.0	2.5	2.0	NE	SM	None	Main stem splits @2 - 3m into 5 limbs forming a cohesive crown	Good	Fair	20+	C1	4.8	72.0	-
T210	Oak (English)	On	10.0	1	Yes	400	6.0-5.0-5.0-4.5	2.5	2.0	S	SM	None	Main stem splits @2.5m into 4 limbs forming a cohesive crown	Good	Fair	20+	C1	4.8	72.0	-
T211	Ash (Common)	On	7.0	1	Yes	300	5.0-4.0-3.0-3.0	2.5	2.5	NE	SM	None	Ditch to south. Early signs of ash dieback	Fair	Good	10+	C1	3.6	41.0	-
T212	Ash (Common)	On	10.0	1	Yes	350	5.0-5.0-5.0-5.0	2.0	3.0	W	SM	None	Ditch to south	Good	Good	20+	B1	4.2	55.0	-
T213	Ash (Common)	On	10.0	2	Yes	400	3.5-3.0-3.5-4.0	3.0	0.0	None	SM	None	Sub dominant stem to E; causing rubbing of stems & a hindrance to good crown development of both the stem & parent tree	Good	Fair	20+	C1	4.8	72.0	-
T214	Ash (Common)	On	9.0	1	Yes	300	3.5-3.5-3.0-3.0	3.0	0.0	None	SM	None	Twin stemmed from 1m forming a cohesive crown; dia. est. @ 0.25m	Good	Fair	20+	C1	3.6	41.0	-
T215	Ash (Common)	On	9.0	1	Yes	300	5.0-5.0-3.0-5.0	2.0	2.5	W	SM	None	Ditch to south	Good	Good	20+	B1	3.6	41.0	-
T216	Maple (Field)	On	5.0	2	Yes	250	4.0-3.0-2.0-3.0	2.0	2.0	W	SM	None	Ditch to south. Twin stem at 0.5m	Good	Fair	20+	B1	3.0	28.0	-
T217	Ash (Common)	On	9.0	1	None	300	5.0-5.0-4.0-4.0	2.0	2.0	S	SM	None	Ditch to south. Pruning wounds on stem	Good	Good	20+	B1	3.6	41.0	-
T218	Ash (Common)	On	10.0	1	None	300	3.0-5.0-4.0-3.0	2.0	2.0	E	SM	None	Tear out wound to north over track	Good	Good	20+	B1	3.6	41.0	-



Ref	Species	On/off site	Height (m)	No. of stems	Est diam?	Calc. / actual stem dia. (mm)	Crown radii (m) N-E-S-W	Av. low crown height (m)	1st branch ht (m)	1st branch dir.	Life stage	Special importance	General observations	Health & vitality	Structural condition	Estimated remaining contribution (Years)	BS 5837 Category	RPA radius (m)	RPA m <sup>2</sup>	Veteran / ancient tree buffer(m)
T219	Elm (English)	On	9.0	1	Yes	300	3.5-3.0-3.0-3.0	2.5	0.0	N	EM	None	Sub dominant stem to N which is causing rubbing of stems & a hindrance to good crown development of both the stem & parent tree; good vigour throughout crown	Good	Fair	20+	B1	3.6	41.0	-
T220	Ash (Common)	On	6.0	1	None	200	3.0-3.0-2.0-3.0	2.0	2.0	E	SM	None	Ditch to south	Fair	Good	10+	C1	2.4	18.0	-
T221	Ash (Common)	On	8.0	1	None	200	4.0-4.0-3.0-4.0	2.5	2.5	E	SM	None	Possible early signs of ash dieback. Ditch to south	Fair	Good	10+	C1	2.4	18.0	-
T222	Ash (Common)	On	8.0	1	None	300	4.0-4.0-4.0-4.0	2.5	2.5	E	SM	None	Tear out wound in branch north over track. Possible early signs of ash dieback	Fair	Good	10+	C1	3.6	41.0	-
T223	Ash (Common)	On	10.0	1	None	300	4.0-4.0-4.0-4.0	2.5	2.5	E	SM	None	No significant defects	Good	Good	20+	B1	3.6	41.0	-
T224	Ash (Common)	On	8.0	1	Yes	280	4.0-3.0-2.0-4.0	2.5	2.5	W	SM	None	Ditch to south. Early signs of ash dieback	Fair	Fair	10+	C1	3.3	35.0	-
T225	Ash (Common)	On	8.0	2	Yes	220	4.0-2.0-4.0-3.0	2.0	2.5	S	SM	None	Twin stem at base. Early signs of ash dieback. Gaps in crown due to pruning	Fair	Fair	10+	C1	2.6	22.0	-
T226	Ash (Common)	On	8.0	2	Yes	280	5.0-3.0-5.0-4.0	2.0	2.5	W	SM	None	Twin stem at base. Early signs of ash dieback. Gaps in crown due to pruning	Fair	Fair	10+	C1	3.3	35.0	-
T227	Ash (Common)	On	8.0	1	Yes	300	5.0-4.0-5.0-4.0	2.0	2.5	N	SM	None	Hedge row tree	Good	Good	20+	B1	3.6	41.0	-
T228	Ash (Common)	On	7.0	1	Yes	250	3.0-3.0-3.0-3.0	2.0	2.0	S	SM	None	Hedge row tree. Some deadwood in crown	Fair	Fair	10+	C1	3.0	28.0	-
T229	Ash (Common)	On	16.0	1	Yes	700	7.0-6.0-7.0-6.5	3.5	2.5	S	M	None	Large area of bark damage & visible cavity to S of stem; low vigour throughout crown with moderate sized deadwood in upper crown; visible woodpecker activity & small twiggly dieback throughout crown; good habitat value	Fair	Fair	10+	C3	8.4	222.0	-
T230	Ash (Common)	On	9.0	1	Yes	500	6.0-5.0-5.0-4.0	3.5	3.5	N	EM	None	Large area of bark damage & visible cavity to E of stem; large pruning wound to E of stem @4m; low vigour throughout crown with small twiggly dieback; good habitat value	Fair	Fair	20+	C3	6.0	113.0	-



Ref	Species	On/off site	Height (m)	No. of stems	Est diam?	Calc. / actual stem dia. (mm)	Crown radii (m) N-E-S-W	Av. low crown height (m)	1st branch ht (m)	1st branch dir.	Life stage	Special importance	General observations	Health & vitality	Structural condition	Estimated remaining contribution (Years)	BS 5837 Category	RPA radius (m)	RPA m <sup>2</sup>	Veteran / ancient tree buffer(m)
T231	Ash (Common)	On	16.0	1	None	600	6.0-7.0-6.0-6.0	2.0	3.0	SW	M	None	Field boundary ditch to south	Good	Good	20+	B1	7.2	163.0	-
T232	Ash (Common)	On	9.0	1	Yes	350	4.0-4.0-3.5-3.0	3.5	2.5	E	SM	None	Typical for age & species	Good	Fair	20+	C1	4.2	55.0	-
T233	Ash (Common)	On	8.0	1	Yes	300	3.5-3.0-2.5-2.5	3.5	2.5	N	SM	None	Typical for age & species	Good	Fair	20+	C1	3.6	41.0	-
T234	Oak (English)	On	16.0	1	Yes	900	7.5-7.0-7.0-8.0	3.5	2.0	S	M	None	Main stem splits @3.5m into 4 scaffold limbs; historical storm damage to S @6.5m + associated damage & vigorous re-gen around wound; small sized deadwood throughout mid crown; access track to E	Good	Fair	40+	A1	10.8	366.0	-
T235	Ash (Common)	On	8.0	1	Yes	700	3.5-3.5-3.5-3.5	3.0	0.0	None	M	None	Decayed mature bole with SM re-gen forming a new crown; visible hollowing to main stem; good habitat value	Fair	Fair	20+	B3	8.4	222.0	-
T236	Ash (Common)	On	9.0	1	Yes	250	3.0-3.0-3.0-3.0	1.5	1.5	E	EM	None	Field boundary ditch to north	Fair	Fair	10+	C1	3.0	28.0	-
T237	Ash (Common)	On	14.0	1	Yes	650	6.5-5.5-5.0-5.0	3.0	3.5	SW	M	None	Main stem splits @5.5m into 3; visible woodpecker activity to S of stem @6m; lack of vigour with small to moderate sized deadwood throughout crown; hung-up deadwood to W of crown @7m; good habitat value	Fair	Fair	20+	B3	7.8	191.0	-
T238	Hawthorn	On	8.0	2	Yes	490	3.0-2.0-3.0-2.5	1.0	0.5	E	LM	None	Field boundary ditch to north. Twin stem at base. Ivy clad stems. Cavities in stems. Declining vitality	Fair	Fair	10+	C3	5.9	109.0	-
T239	Hawthorn	On	10.0	1	Yes	250	2.0-3.0-2.0-1.0	0.0	1.0	E	EM	None	Field boundary ditch to north. Dense ivy clad stem and crown impacting vitality	Poor	Fair	10+	C1	3.0	28.0	-
T240	Ash (Common)	On	12.0	1	Yes	800	5.0-8.0-5.0-5.0	2.0	3.0	SW	M	None	Field boundary ditch to north. Dense ivy on stem.	Fair	Fair	20+	B1	9.6	290.0	-
T241	Ash (Common)	On	13.0	1	None	400	5.0-2.0-2.0-5.0	3.0	3.0	S	EM	None	Field boundary ditch to north. Ivy clad stem. Poorly pruned branch stubs south	Fair	Fair	10+	C1	4.8	72.0	-
T242	Ash (Common)	On	14.0	1	Yes	750	6.0-6.0-3.0-5.0	2.0	3.0	S	M	None	Field boundary ditch to north and west. Ivy clad stem	Good	Fair	20+	B1	9.0	254.0	-
T243	Willow (Crack)	On	13.0	6	Yes	370	6.0-4.0-3.0-5.0	0.0	0.0	N	LM	None	Field boundary ditch to north. Partially failed stems	Good	Fair	10+	C1	4.4	62.0	-

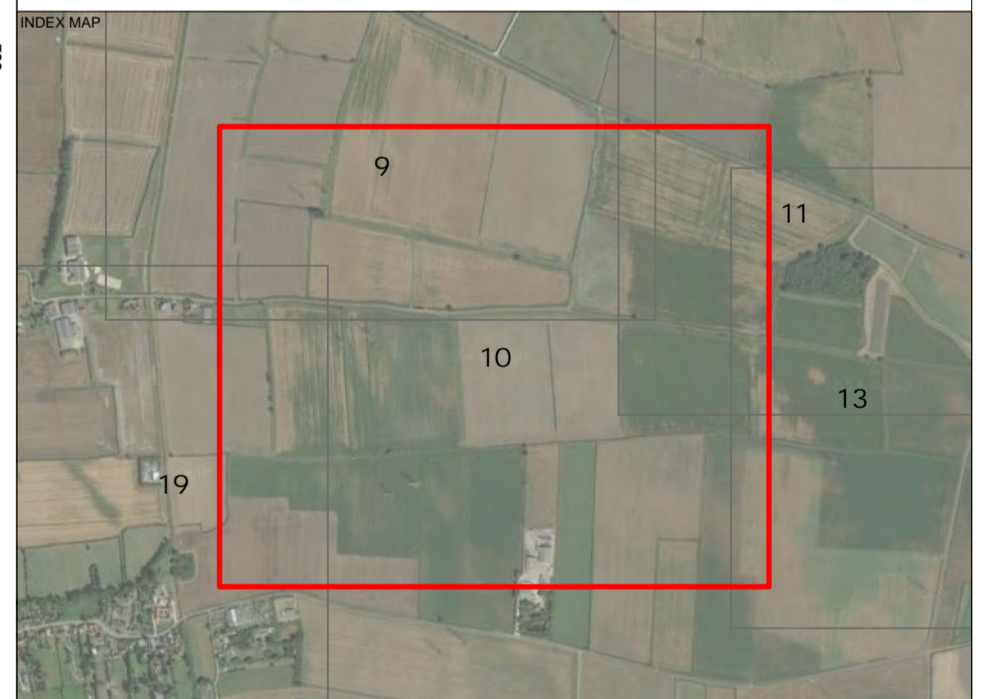




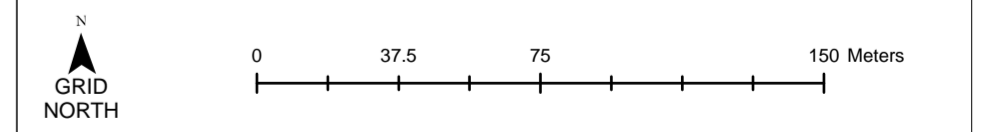
- KEY**
- Category A Tree - High quality (Retention highly desirable)
  - Category A - Hedgerow, Group, Woodland - High quality (Retention highly desirable)
  - Category B Tree - Moderate quality (Retention desirable)
  - Category B - Hedgerow, Group, Woodland - Moderate quality (Retention desirable)
  - Category C Tree - Low quality (May be retained but should not constrain development)
  - Category C - Hedgerow, Group, Woodland - Low quality (May be retained but should not constrain development)
  - Category U Tree - Very low quality (Mostly unsuitable for retention)
  - Category U - Hedgerow, Group, Woodland - Very low quality (Mostly unsuitable for retention)
  - Root Protection Area (RPA) - Layout design tool indicating the minimum area around a tree deemed to contain sufficient roots and soil volume to maintain the tree's viability
  - Shrub mass/offsite tree/out of scope (OOS)
  - Tree/Group/Hedgerow not on topographical survey. Location given is an estimate
  - Ancient Tree / Woodland or Veteran Trees
  - Ancient tree/woodland or Veteran tree: Important trees that require special consideration
  - Ancient tree/woodland or Veteran tree buffer: As per published standing advice from Natural England and the Forestry Commission
  - Statutory Protection
  - Tree Preservation Order (TPO): Trees under statutory protection. No tree works to be undertaken without specific consent or by relevant exception. The site may be within a designated Conservation Area which restricts tree works. Please see attached advice and guidance.
  - Existing gateway or field access
  - Target Note

Label	Description
OOS 001	Offsite ash, 8m tall
OOS 002	Offsite ash, 9m tall
OOS 003	Offsite ash, 9m tall
OOS 004	Offsite ash, 9m tall
OOS 005	Offsite ash, 8m tall
OOS 006	Collapsed dead tree 12m into site
OOS 007	Scrub mature ash - 7m tall
OOS 008	Offsite railway field maple, 3m tall
OOS 009	Heavily decayed ash stump, felled @ 1.5m, approx. dia. 850mm, small crown formed by young re-gen, not posted on top
OOS 010	Young dead stem
OOS 011	Bramble, hawthorn felled out of-escape hedging
OOS 012	Bramble, hawthorn, blackthorn felled out of-escape hedging
OOS 013	Saplings with tree protection measures
OOS 014	Saplings with tree protection measures
OOS 015	Sub 75mm predominantly blackthorn
OOS 016	Sub 75mm basal regrowth: crack willow, common ash, field maple, elder
OOS 017	Sub 75mm basal regrowth: crack willow, common ash, field maple, elder, hawthorn
OOS 018	Off-site adjacent to railway side, self established young thorn & maple
OOS 019	Off-site adjacent to railway side, self established young thorn & dogrose
OOS 020	Scrub - willow, laurel, sapling hawthorn
OOS 021	Area of scrub - elder, bramble, sapling hawthorn mix - 2m tall

Label	Description
TN1	Public survey access
TN2	Oak trees within the hedgerow are set back from site redline beyond RPA's
TN3	Oak trees within the hedgerow are set back from site redline beyond RPA's
TN4	Existing compacted earth and stone track



Note: The original of this drawing was produced in colour – a monochrome copy should not be relied upon. This drawing should be interpreted with reference to the accompanying tree schedule and written advice



PROJECT TITLE	Steeple (5343)		
DRAWING TITLE	Tree Survey Plan		
SCALE	Scale: 1:2,000 @ A1	DRAWING NUMBER	BHA_5343_01
DRAWN BY	APPROVED BY	REVISION	SHEET
TH	TH	10 of 19	DATE 14/05/2024
COORDINATE SYSTEM / DATUM British National Grid / Newlyn Datum (AOD)			
CLIENT	RES		
CREDITS	Crown copyright. All rights reserved. 2024 Ordnance Licence number 0100642864. Ordnance Survey Copyright Licence number 100054267.		

**Barton Hyett Associates**  
Arboricultural Consultants

Tel: 01386 576161  
Address: Office 5E, Deer Park Business Centre,  
Eckington, Peshore, Worcestershire, WR10 3DN

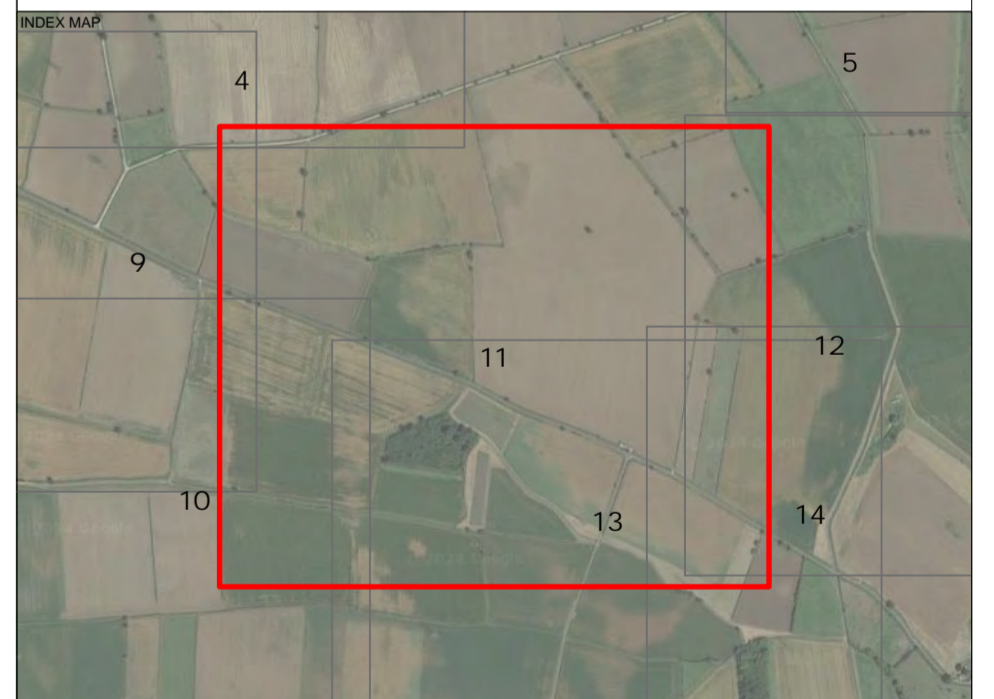




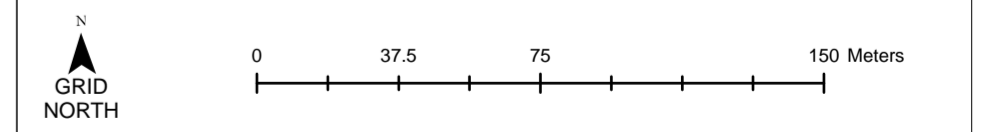
- KEY**
- Category A Tree - High quality (Retention highly desirable)
  - Category A - Hedgerow, Group, Woodland - High quality (Retention highly desirable)
  - Category B Tree - Moderate quality (Retention desirable)
  - Category B - Hedgerow, Group, Woodland - Moderate quality (Retention desirable)
  - Category C Tree - Low quality (May be retained but should not constrain development)
  - Category C - Hedgerow, Group, Woodland - Low quality (May be retained but should not constrain development)
  - Category U Tree - Very low quality (Mostly unsuitable for retention)
  - Category U - Hedgerow, Group, Woodland - Very low quality (Mostly unsuitable for retention)
  - Root Protection Area (RPA) - Layout design tool indicating the minimum area around a tree deemed to contain sufficient roots and soil volume to maintain the tree's viability
  - Shrub mass/offsite tree/out of scope (OOS)
  - Tree/Group/Hedgerow not on topographical survey. Location given is an estimate
  - Ancient Tree / Woodland or Veteran Trees**
  - Ancient tree/woodland or Veteran tree: Important trees that require special consideration
  - Ancient tree/woodland or Veteran tree buffer: As per published standing advice from Natural England and the Forestry Commission
  - Statutory Protection**
  - Tree Preservation Order (TPO): Trees under statutory protection. No tree works to be undertaken without specific consent or by relevant exception. The site may be within a designated Conservation Area which restricts tree works. Please see attached advice and guidance.
  - Existing gateway or field access
  - Target Note

Label	Description
OOS 001	Offsite ash, 8m tall
OOS 002	Offsite ash, 9m tall
OOS 003	Offsite ash, 9m tall
OOS 004	Offsite ash, 9m tall
OOS 005	Offsite ash, 8m tall
OOS 006	Collapsed dead tree 12m into site
OOS 007	Small mature ash - 7m tall
OOS 008	Offsite railway field maple, 3m tall
OOS 009	Heavily decayed ash stump, felled @ 1.5m, approx. dia. 850mm, small crown formed by young re-gen, not posted on top
OOS 010	Young dead stem
OOS 011	Bramble, Hawthorn felled out-of-scope hedging
OOS 012	Bramble, Hawthorn, Blackthorn felled out-of-scope hedging
OOS 013	Saplings with tree protection measures.
OOS 014	Saplings with tree protection measures.
OOS 015	Sub 75mm predominantly blackthorn
OOS 016	Sub 75mm basal regrowth: crack willow, common ash, field maple, elder
OOS 017	Sub 75mm basal regrowth: crack willow, common ash, field maple, elder, hawthorn
OOS 018	Off-site adjacent to railway side, self established young thorn & maple
OOS 019	Off-site adjacent to railway side, self established young thorn & dogrose
OOS 020	Small - willow, laurel, sapling hawthorn
OOS 021	Area of scrub - elder, bramble, sapling hawthorn max - 2m tall

Label	Description
TN1	Public survey access
TN2	Oak trees within the hedgerow are set back from site redline beyond RPAs
TN3	Oak trees within the hedgerow are set back from site redline beyond RPAs
TN4	Existing compacted earth and stone track



Note: The original of this drawing was produced in colour – a monochrome copy should not be relied upon. This drawing should be interpreted with reference to the accompanying tree schedule and written advice



PROJECT TITLE	Steeple (5343)		
DRAWING TITLE	Tree Survey Plan		
SCALE	Scale: 1:2,000 @ A1	DRAWING NUMBER	BHA_5343_01
DRAWN BY	TS	APPROVED BY	TH
REVISION	11 of 19	DATE	14/05/2024
COORDINATE SYSTEM / DATUM	British National Grid / Newlyn Datum (AOD)		
CLIENT	RES		
CREDITS	Crown copyright. All rights reserved. 2104 Ordnance Licence number 010061064. Ordnance Survey Copyright Licence number 100054267.		

**Barton Hyett Associates**  
Arboricultural Consultants

Tel: 01386 576161  
Address: Office 5E, Deer Park Business Centre,  
Eckington, Peshore, Worcestershire, WR10 3DN

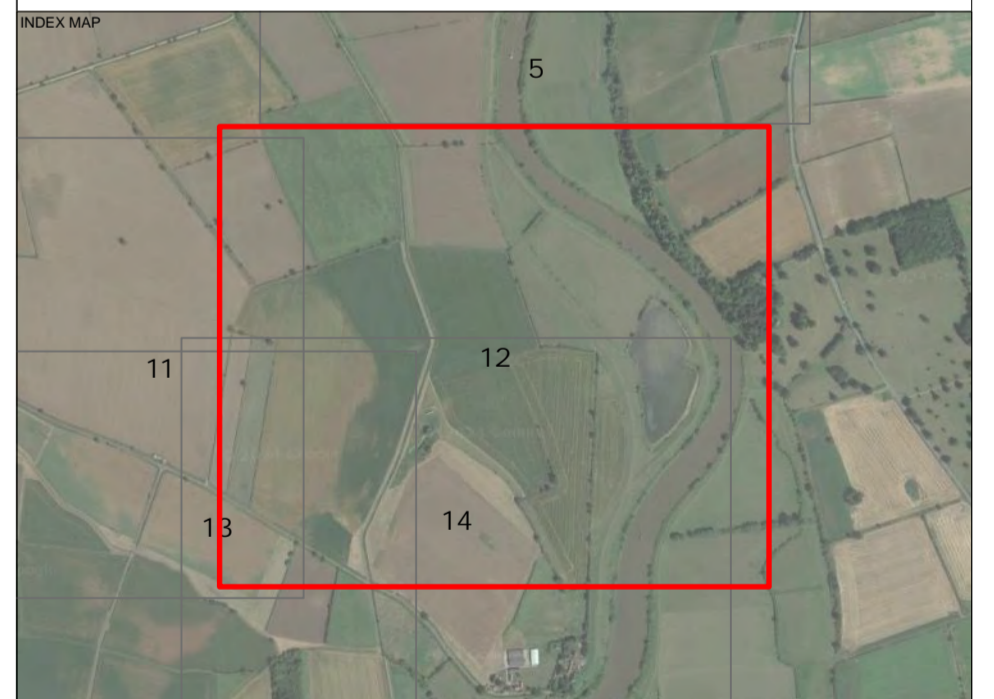




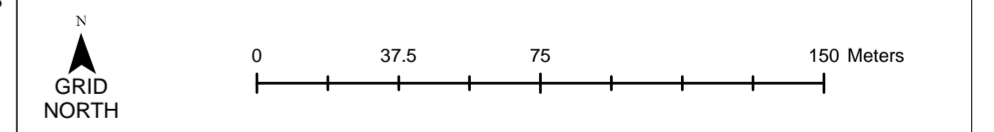
- KEY**
- Category A Tree - High quality (Retention highly desirable)
  - Category A - Hedgerow, Group, Woodland - High quality (Retention highly desirable)
  - Category B Tree - Moderate quality (Retention desirable)
  - Category B - Hedgerow, Group, Woodland - Moderate quality (Retention desirable)
  - Category C Tree - Low quality (May be retained but should not constrain development)
  - Category C - Hedgerow, Group, Woodland - Low quality (May be retained but should not constrain development)
  - Category U Tree - Very low quality (Mostly unsuitable for retention)
  - Category U - Hedgerow, Group, Woodland - Very low quality (Mostly unsuitable for retention)
  - Root Protection Area (RPA) - Layout design tool indicating the minimum area around a tree deemed to contain sufficient roots and soil volume to maintain the tree's viability
  - Shrub mass/offsite tree/out of scope (OOS)
  - Tree/Group/Hedgerow not on topographical survey. Location given is an estimate
  - Ancient Tree / Woodland or Veteran Trees**
  - Ancient tree/woodland or Veteran tree: Important trees that require special consideration
  - Ancient tree/woodland or Veteran tree buffer: As per published standing advice from Natural England and the Forestry Commission
  - Statutory Protection**
  - Tree Preservation Order (TPO): Trees under statutory protection. No tree works to be undertaken without specific consent or by relevant exception. The site may be within a designated Conservation Area which restricts tree works. Please see attached advice and guidance.
  - Existing gateway or field access
  - Target Note

Label	Description
OOS 001	Offsite ash, 8m tall
OOS 002	Offsite ash, 9m tall
OOS 003	Offsite ash, 9m tall
OOS 004	Offsite ash, 8m tall
OOS 005	Offsite ash, 8m tall
OOS 006	Collapsed dead tree 12m into site
OOS 007	Semi mature ash - 7m tall
OOS 008	Offsite railway field maple, 3m tall
OOS 009	Heavily decayed ash stump, felled @ 1.5m, approx. dia. 850mm, small crown formed by young re-gen, not posted on top
OOS 010	Young dead stem
OOS 011	Bramble, hawthorn felled out-of-scope hedging
OOS 012	Bramble, hawthorn, blackthorn felled out-of-scope hedging
OOS 013	Saplings with tree protection measures.
OOS 014	Saplings with tree protection measures.
OOS 015	Sub 75mm predominantly blackthorn
OOS 016	Sub 75mm basal regrowth: crack willow, common ash, field maple, elder
OOS 017	Sub 75mm basal regrowth: crack willow, common ash, field maple, elder, hawthorn
OOS 018	Off-site adjacent to railway side, self established young thorn & maple
OOS 019	Off-site adjacent to railway side, self established young thorn & dogrose
OOS 020	Spash - willow, laurel, sapling hawthorn
OOS 021	Area of scrub - elder, bramble, sapling hawthorn mix - 2m tall

Label	Description
TW1	Public survey access
TN2	Oak trees within the hedgerow are set back from site redline beyond RPA's
TN3	Oak trees within the hedgerow are set back from site redline beyond RPA's
TN4	Existing compacted earth and stone track



Note: The original of this drawing was produced in colour – a monochrome copy should not be relied upon. This drawing should be interpreted with reference to the accompanying tree schedule and written advice



PROJECT TITLE		Steeple (5343)	
DRAWING TITLE		Tree Survey Plan	
SCALE	Scale: 1:2,000 @ A1	DRAWING NUMBER	BHA_5343_01
DRAWN BY	APPROVED BY	REVISION	SHEET
TH	TH	12 of 19	DATE
COORDINATE SYSTEM / DATUM			
British National Grid / Newlyn Datum (AOD)			
CLIENT			
RES			
CREDITS			
Crown copyright. All rights reserved. 2024 Ordnance Licence number 0100642664. Ordnance Survey Copyright Licence number 100054267.			

**Barton Hyett Associates**  
Arboricultural Consultants

Tel: 01386 576161  
Address: Office 5E, Deer Park Business Centre,  
Eckington, Peshore, Worcestershire, WR10 3DN