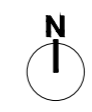


- Key:
- Approximate Proposed Development Boundary
  - Construction Traffic Route
  - Western Land Parcel
  - Eastern Land Parcel
  - Bio Diversity Mitigation Land Use



A 21/11/2024 RED LINE UPDATED, ANNOTATIONS ADDED			JAN/CB	
REV	DATE	DESCRIPTION	REVISED BY	APPROVED BY

## PROPOSED DEVELOPMENT LOCATION AND ROUTING PLAN

### STEEPLE SOLAR FARM, STURTON LE STEEPLE

CLIENT: RES LIMITED STATUS: INDICATIVE

DATE: 10/10/2024 SCALE: NTS DRAWN/CHECKED BY: LT/CB APPROVED BY: KE

JOB No: P22-1144 DRAWING No: FIGURE 13.1 REVISION No: A

