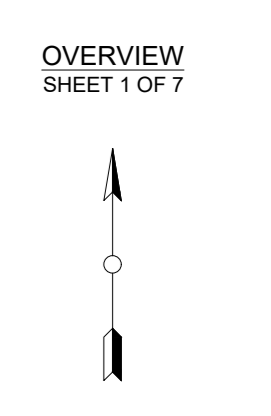
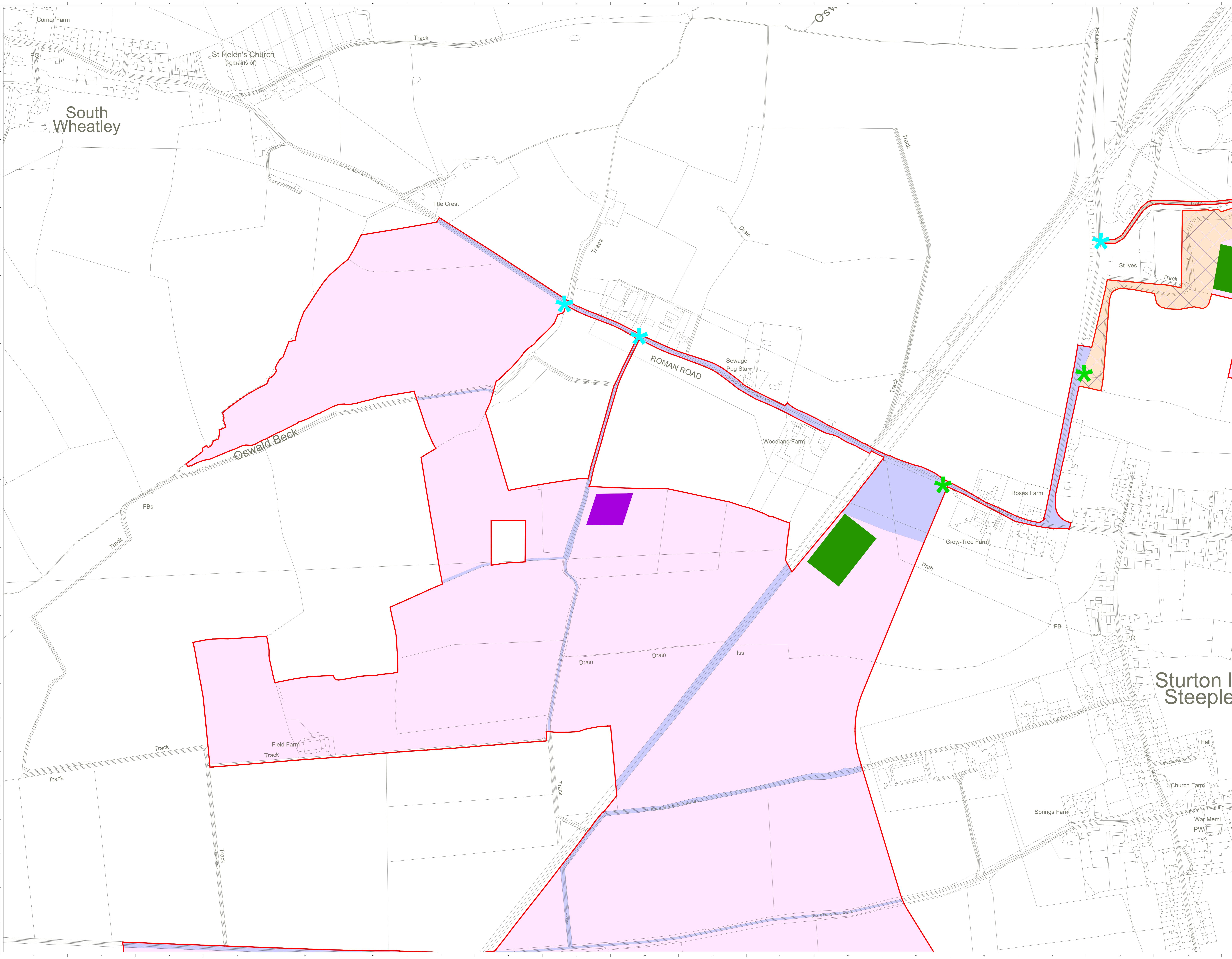


- KEY:**
- SITE BOUNDARY (OUTSIDE EDGE OF LINE DENOTES BOUNDARY)
 - AREA FOR SOLAR PANELS AND ASSOCIATED DEVELOPMENT
 - CABLE INFRASTRUCTURE
 - SUBSTATION, BESS AND ASSOCIATED INFRASTRUCTURE
 - BIO DIVERSITY MITIGATION
 - BIO DIVERSITY MITIGATION AND CABLE INFRASTRUCTURE
 - RESERVE SITE ACCESS CORRIDOR IF SUBSEQUENTLY NEEDED
 - SITE ACCESS CORRIDOR AND CABLE INFRASTRUCTURE
 - ACCESS TO WEST BURTON POWER STATION
 - PRIMARY CONSTRUCTION COMPOUND
 - SECONDARY CONSTRUCTION COMPOUND
 - PRIMARY ACCESS POINT
 - INTERNAL SITE NODE



2	FC	JR	MS	2024-10-04	Final design (Final boundary update)
1	FC	JR	MS	2024-11-15	Site boundary and owners update
0	FC	JR	MS	2024-11-05	Final issue
ISSUE	DRAWN	CHECK	DATE	REVISION	NOTES
PURPOSE		COORDINATES		OSGB 1936	
SCALE		@ AD		N/A	
LAYOUT DWG		LAYOUT NO		N/A	
PROJECT TITLE					
STEPPLE SOLAR FARM					
DRAWING TITLE					
CONSTRUCTION PHASE INDICATIVE PARAMETERS PLAN					
RES DRAWING NUMBER					
04954-RES-LAY-DR-LE-024					
THIS DRAWING IS THE PROPERTY OF RIVERSIDE ENERGY CONSULTANTS LTD. REPRODUCTION IN WHOLE OR IN PART WITHOUT PERMISSION.					
					3

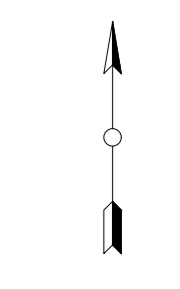


- SITE BOUNDARY (OUTSIDE EDGE OF LINE DEVIATES BOUNDARY)
- AREA FOR SOLAR PANELS AND ASSOCIATED DEVELOPMENT
- CABLE INFRASTRUCTURE
- SUBSTATION, BESS AND ASSOCIATED INFRASTRUCTURE
- BIO DIVERSITY MITIGATION AND CABLE INFRASTRUCTURE
- RESERVE SITE ACCESS CORRIDOR IF SUBSEQUENTLY NEEDED
- SITE ACCESS CORRIDOR AND CABLE INFRASTRUCTURE
- ACCESS TO WEST BURTON POWER STATION
- PRIMARY CONSTRUCTION COMPOUND
- SECONDARY CONSTRUCTION COMPOUND
- * PRIMARY ACCESS POINT
- * INTERNAL SITE NODE



SITE LOCATION - NOT TO SCALE

SHEET 2 OF 7

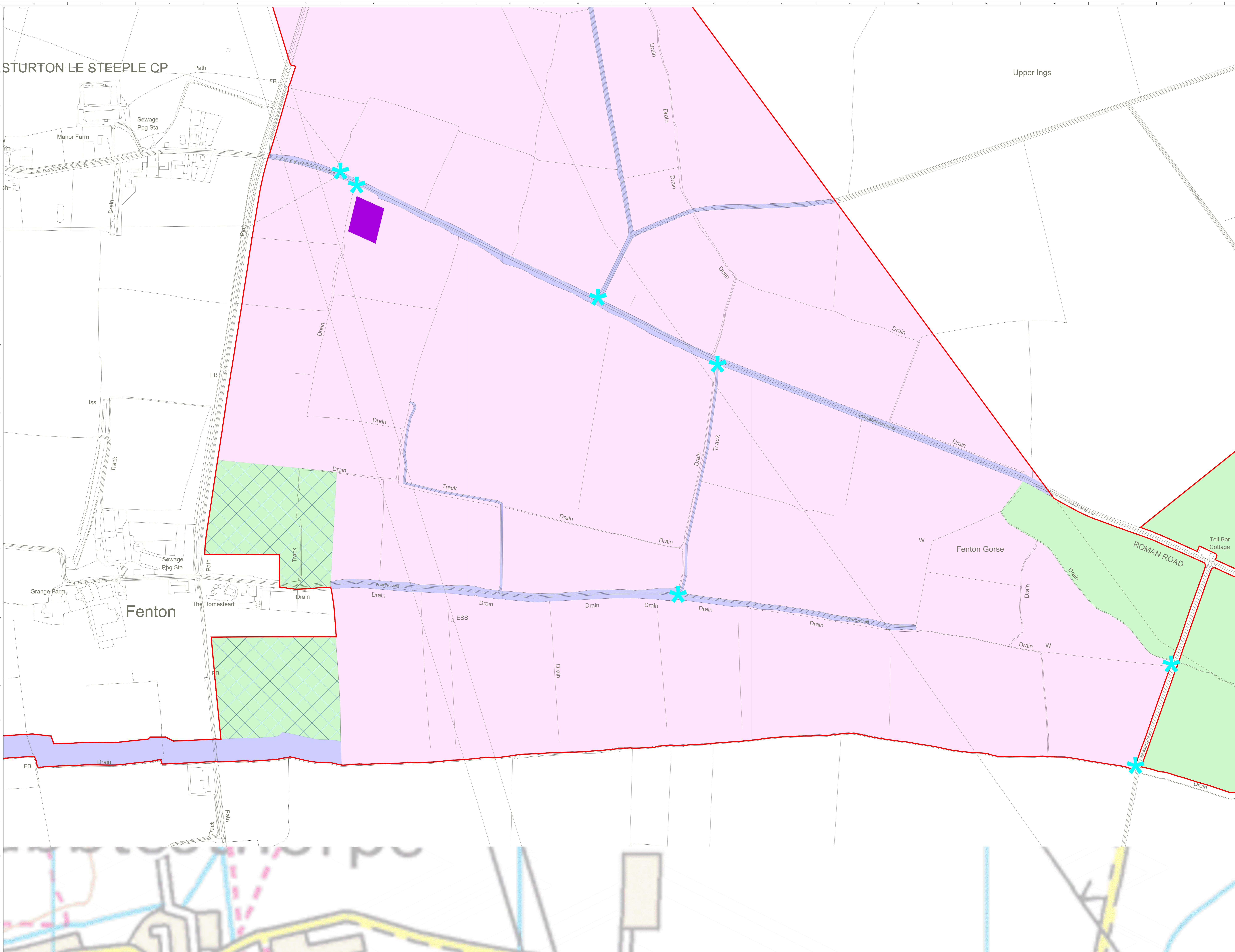


1	JG	JG	JG	JG	2024-10-04	Boundary and access update
2	JG	JG	JG	JG	2024-11-15	Site boundary and access update
3	JG	JG	JG	JG	2024-11-05	Final issue
ISSUE DRAWING: CHG2 / DATE: 2024-11-05 / REVISION NOTES:						
PURPOSE: PRELIMINARY		COORDINATES: OSGB 1936				
SCALE: 1:2,500	@ AD	DATUM: N/A				
LAYOUT DWG: N/A	LAYOUT NO: N/A					
PROJECT TITLE: STEEPLE SOLAR FARM						
DRAWING TITLE: CONSTRUCTION PHASE INDICATIVE PARAMETERS PLAN						
RES DRAWING NUMBER: 04954-RES-LAY-DR-LE-024						REV: 3
THIS DRAWING IS THE PROPERTY OF RES GROUP LIMITED. NO REPRODUCTION MAY BE MADE IN WHOLE OR IN PART WITHOUT PERMISSION.						

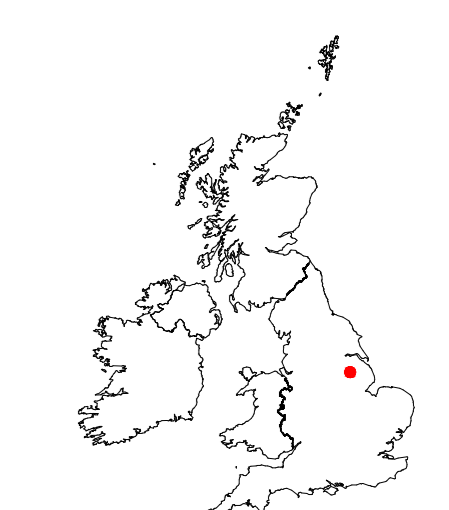


STURTON LE STEEPLE CP

Upper Ings

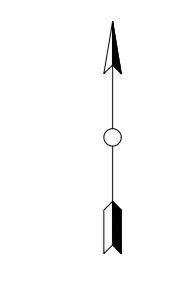


- SITE BOUNDARY (OUTSIDE EDGE OF LINE DEVIOTES BOUNDARY)
- AREA FOR SOLAR PANELS AND ASSOCIATED DEVELOPMENT
- CABLE INFRASTRUCTURE
- SUBSTATION, BESS AND ASSOCIATED INFRASTRUCTURE
- BIO DIVERSITY MITIGATION
- BIO DIVERSITY MITIGATION AND CABLE INFRASTRUCTURE
- RESERVE SITE ACCESS CORRIDOR IF SUBSEQUENTLY NEEDED
- SITE ACCESS CORRIDOR AND CABLE INFRASTRUCTURE
- ACCESS TO WEST BURTON POWER STATION
- PRIMARY CONSTRUCTION COMPOUND
- SECONDARY CONSTRUCTION COMPOUND
- * PRIMARY ACCESS POINT
- * INTERNAL SITE NODE



SITE LOCATION - NOT TO SCALE

SHEET 6 OF 7



REV	NO	DATE	BY	CHKD	APPD	DESCRIPTION
1	1	2024-10-04	MS			Final design and boundary update
2	1	2024-11-15	MS			Site boundary and access update
3	1	2024-11-05	MS			Final issue
ISSUE DRAWING CHECK DATE REVISION NOTES						
PURPOSE			COORDINATES			
PRELIMINARY			OSGB 1936			
SCALE	1:2,500	@ AD	DATUM	N/A		
LAYOUT DWG	N/A	LAYOUT NO	N/A			
PROJECT TITLE						
STEEPLE SOLAR FARM						
DRAWING TITLE						
CONSTRUCTION PHASE INDICATIVE PARAMETERS PLAN						
RES DRAWING NUMBER						
04954-RES-LAY-DR-LE-024						REV
3						3
THIS DRAWING IS THE PROPERTY OF RES GROUP LIMITED AND NO REPRODUCTION MAY BE MADE IN WHOLE OR IN PART WITHOUT PERMISSION						



