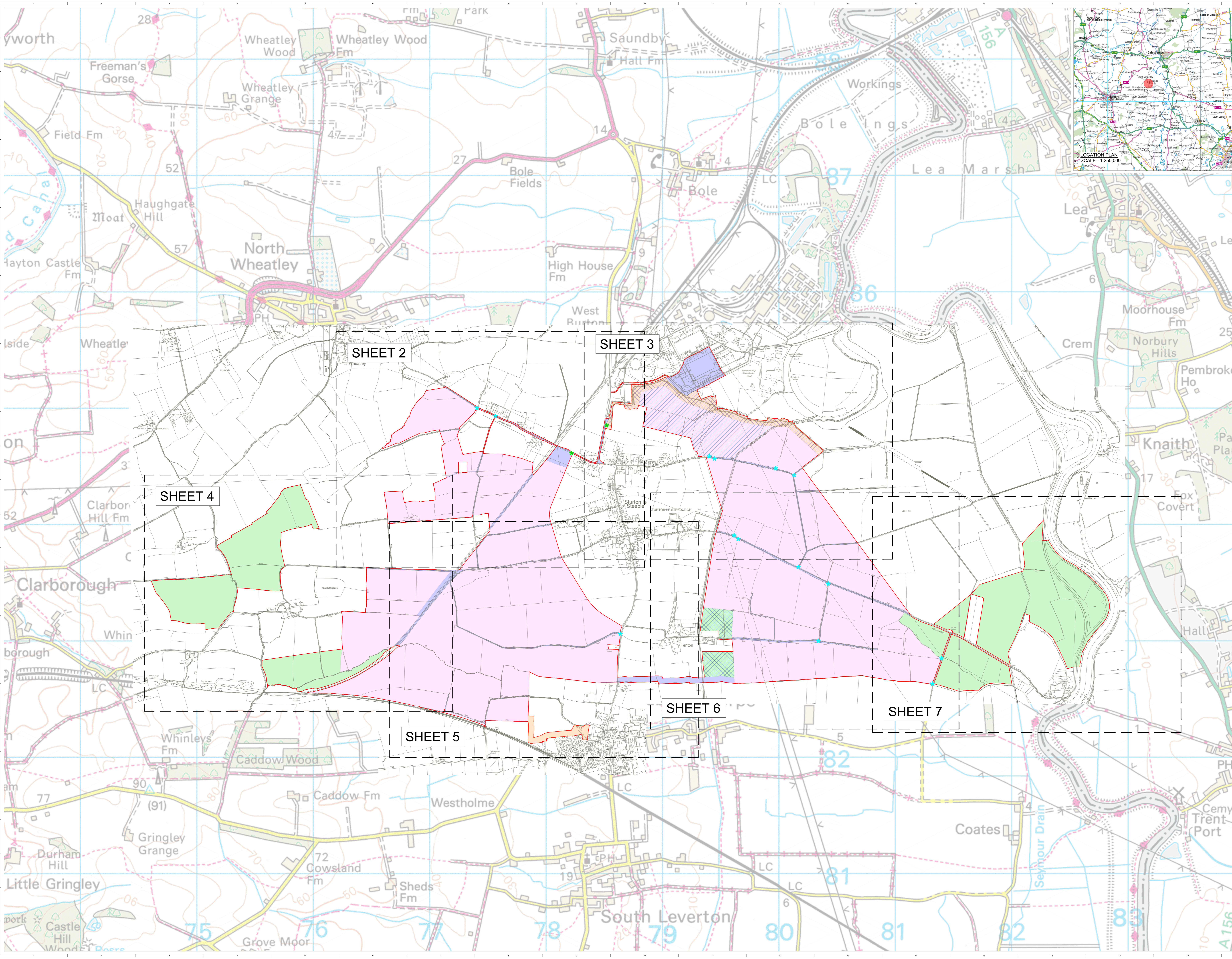
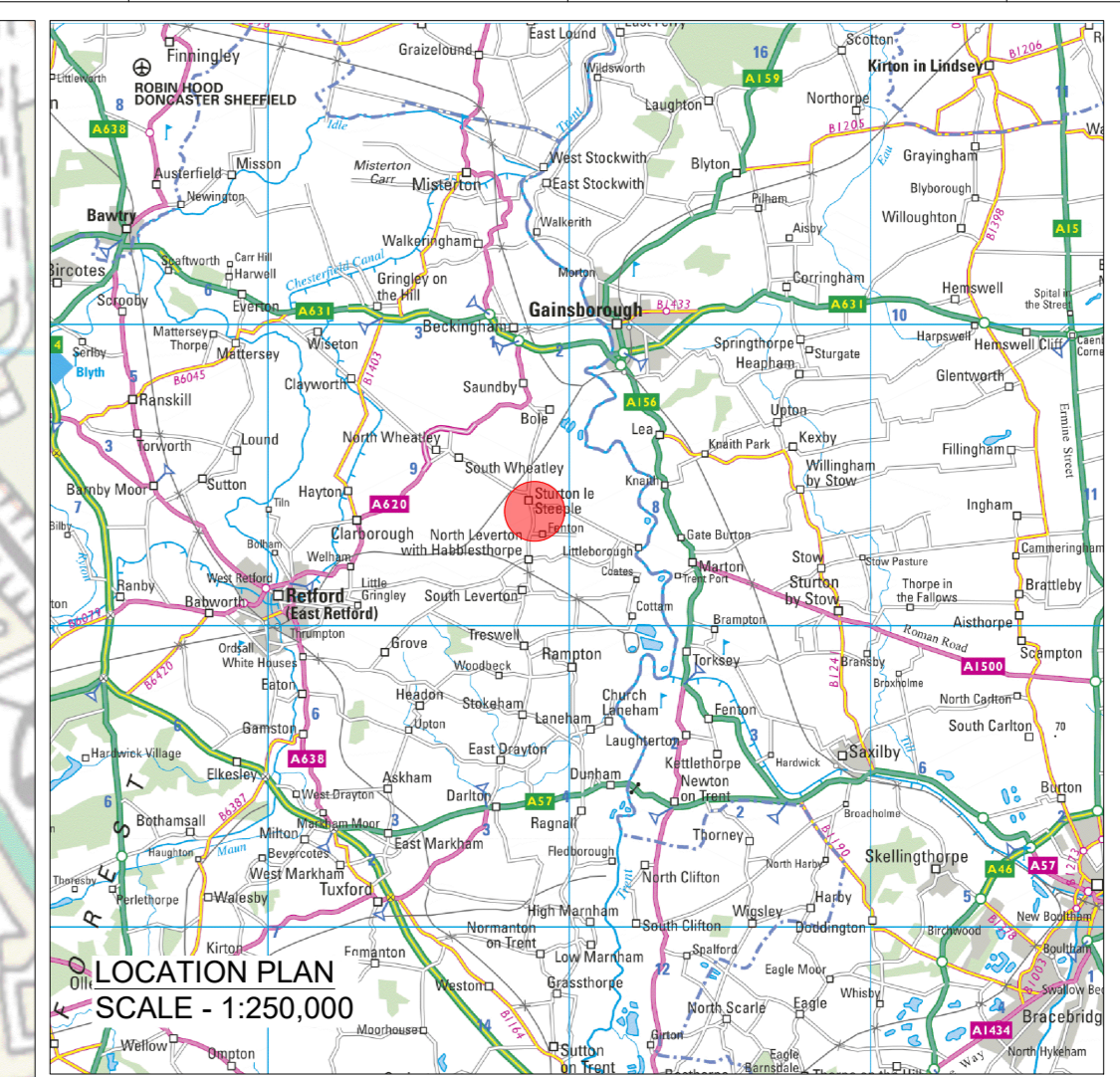


- KEY:**
- SITE BOUNDARY (OUTSIDE EDGE OF LINE DENOTES BOUNDARY)
 - AREA FOR SOLAR PANELS AND ASSOCIATED DEVELOPMENT
 - CABLE INFRASTRUCTURE
 - SUBSTATION, BESS AND ASSOCIATED INFRASTRUCTURE
 - BIO DIVERSITY MITIGATION
 - BIO DIVERSITY MITIGATION AND CABLE INFRASTRUCTURE
 - RESERVE SITE ACCESS CORRIDOR IF SUBSEQUENTLY NEEDED
 - SITE ACCESS CORRIDOR AND CABLE INFRASTRUCTURE
 - ACCESS TO WEST BURTON POWER STATION
 - PRIMARY ACCESS POINT
 - INTERNAL SITE NODE



SHEET 2

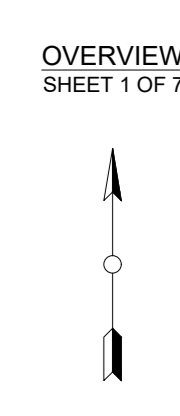
SHEET 3

SHEET 4

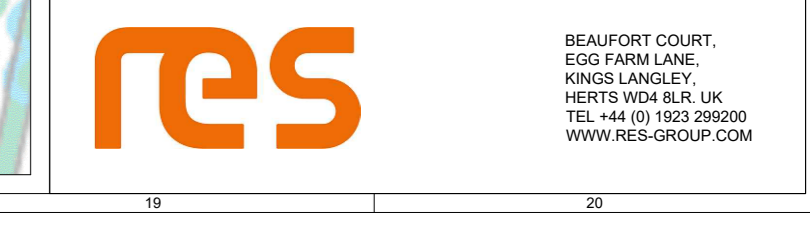
SHEET 5

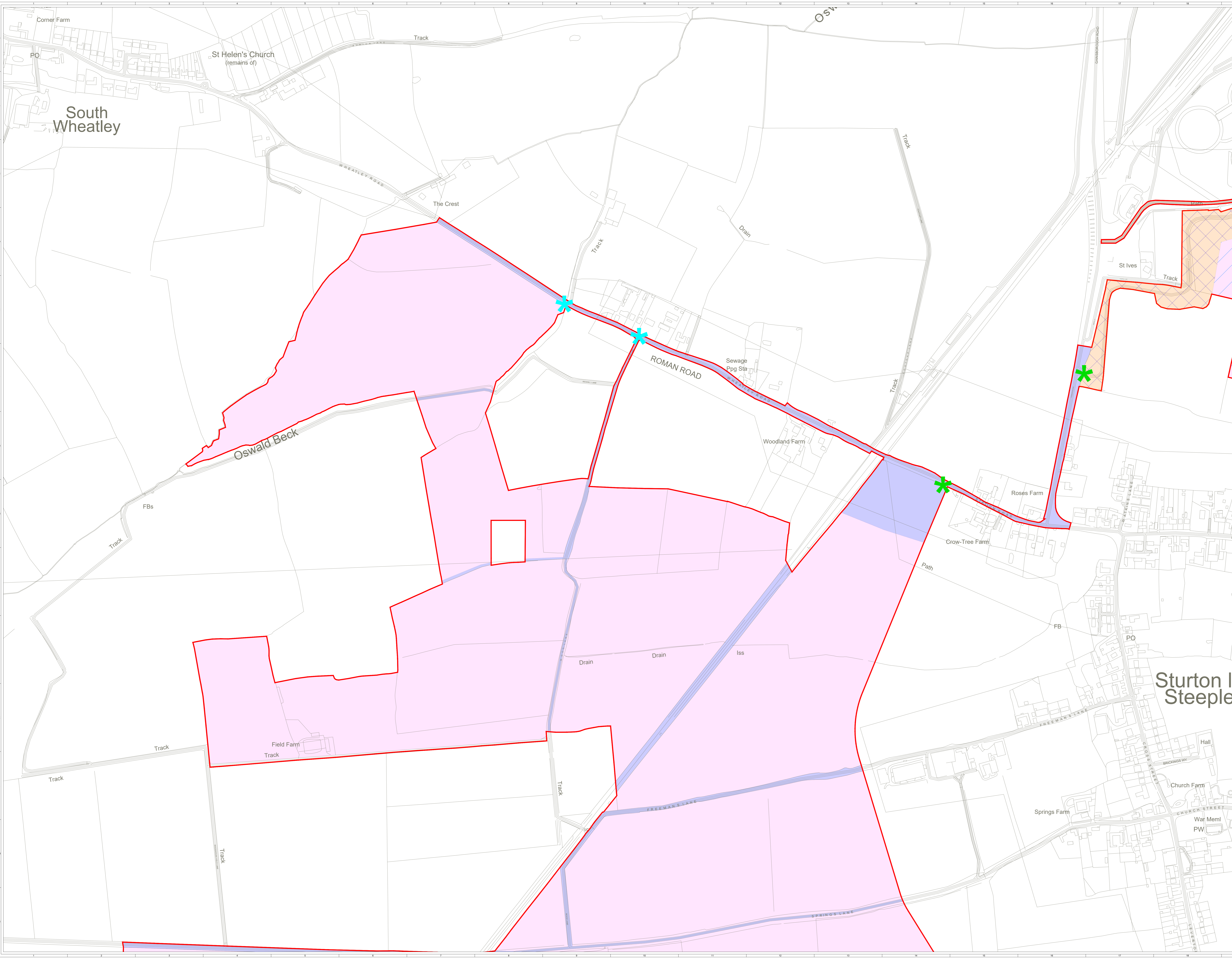
SHEET 6

SHEET 7



2	FC	JR	MS	2024-10-04	Final design and site boundary update
1	FC	JR	MS	2024-11-15	Site boundary and owners update
0	FC	JR	MS	2024-11-05	Final issue
ISSUE	DRAWN	CHECK	DATE	REVISION	NOTES
PURPOSE	PRELIMINARY	DATE	OSGB 1936		
SCALE	1:10,000	@ AD	DATUM	N/A	
LAYOUT DWG	N/A		LAYOUT NO	N/A	
PROJECT TITLE	STEEPLE SOLAR FARM				
DRAWING TITLE	OPERATION PHASE INDICATIVE PARAMETERS PLAN				
RES DRAWING NUMBER	04954-RES-LAY-DR-LE-025				REV 3
THIS DRAWING IS THE PROPERTY OF RESOURCES ENERGY CONSULTANTS LTD. REPRODUCTION OR USE IN WHOLE OR IN PART WITHOUT PERMISSION.					



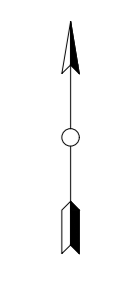


- SITE BOUNDARY (OUTSIDE EDGE OF LINE DENOTES BOUNDARY)
- AREA FOR SOLAR PANELS AND ASSOCIATED DEVELOPMENT
- CABLE INFRASTRUCTURE
- SUBSTATION, BESS AND ASSOCIATED INFRASTRUCTURE
- BIO DIVERSITY MITIGATION AND CABLE INFRASTRUCTURE
- RESERVE SITE ACCESS CORRIDOR IF SUBSEQUENTLY NEEDED
- SITE ACCESS CORRIDOR AND CABLE INFRASTRUCTURE
- ACCESS TO WEST BURTON POWER STATION
- * PRIMARY ACCESS POINT
- * INTERNAL SITE NODE



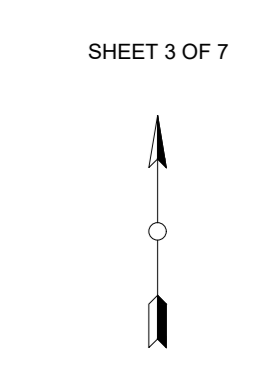
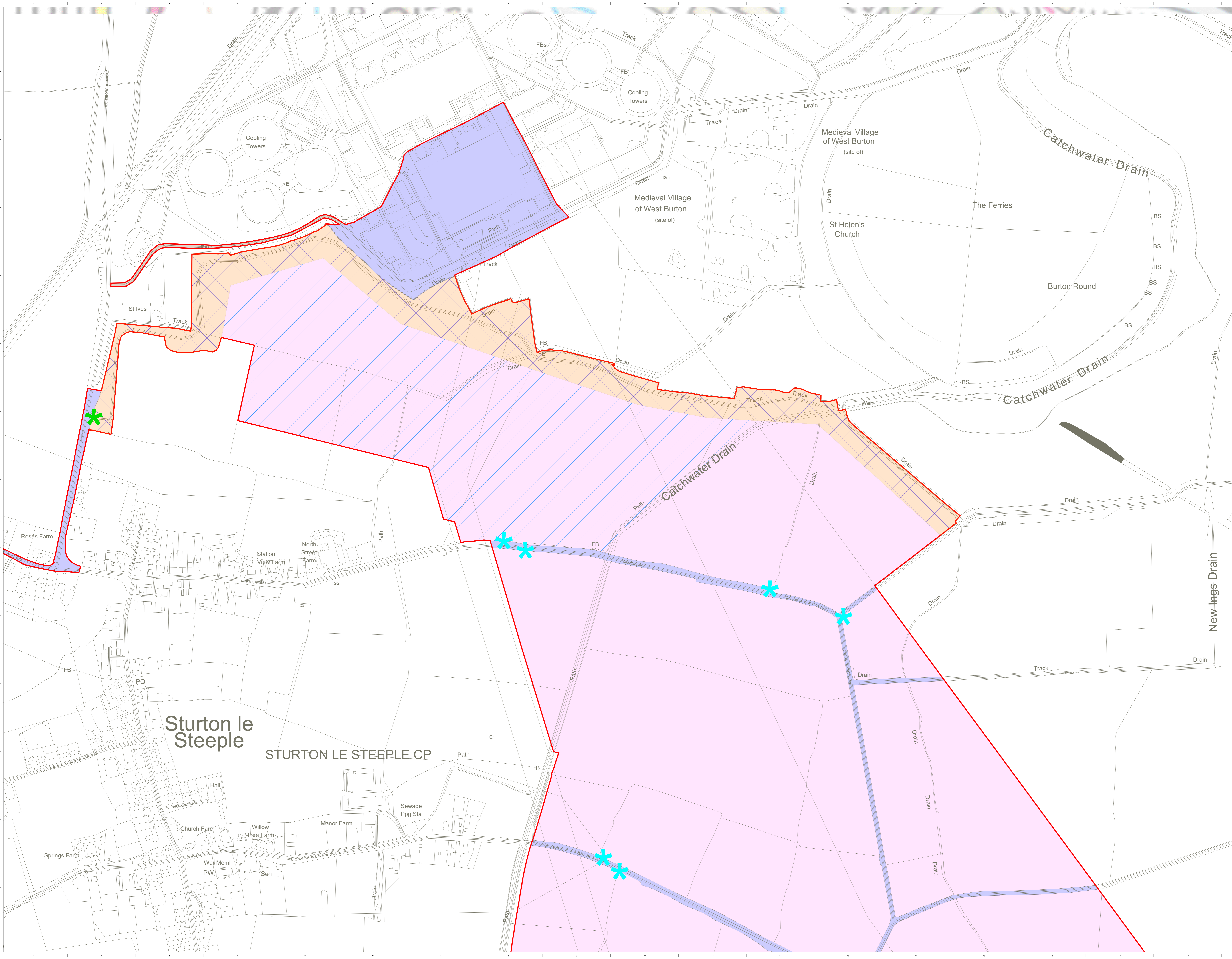
SITE LOCATION - NOT TO SCALE

SHEET 2 OF 7



1	FG	JH	VMS	2024-10-04	Southern access track boundary update
2	FG	JH	VMS	2024-11-15	Site boundary and access update
3	FG	JH	VMS	2024-11-05	Final issue
ISSUE DRAWING: CHG2: 2024: 0015: DATE: REVISION NOTES:					
PURPOSE		COORDINATES		OSGB 1936	
SCALE		DATUM		N/A	
LAYOUT DWG		LAYOUT NO.		N/A	
PROJECT TITLE					
STEEPLE SOLAR FARM					
OPERATION PHASE					
INDICATIVE PARAMETERS PLAN					
RES DRAWING NUMBER					REV
04954-RES-LAY-DR-LE-025					3
THIS DRAWING IS THE PROPERTY OF RES GROUP AND IS UNLAWFULLY LOANED, REPRODUCED OR COPIED WITHOUT PERMISSION.					

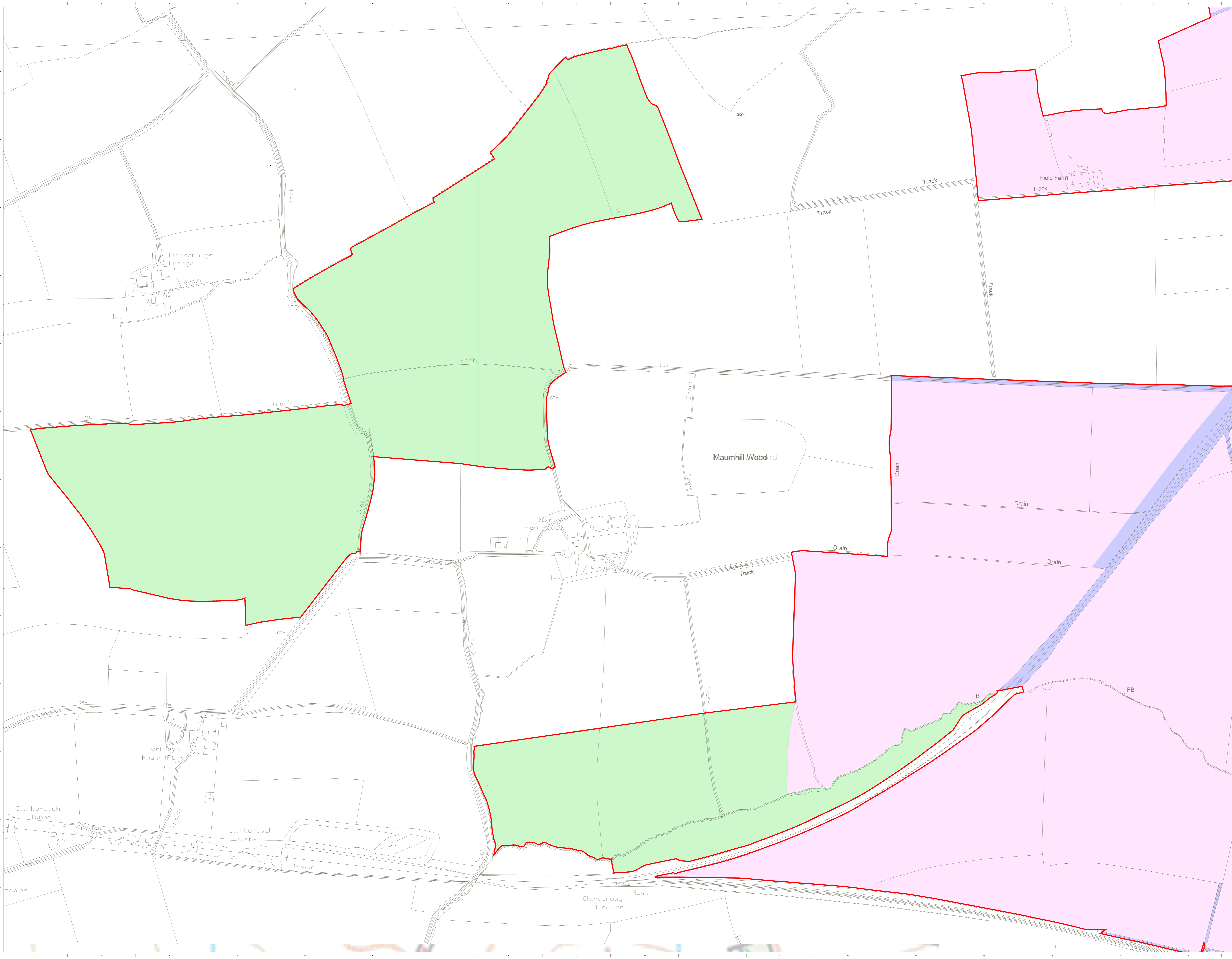
- ▬ SITE BOUNDARY (OUTSIDE EDGE OF LINE DENOTES BOUNDARY)
- AREA FOR SOLAR PANELS AND ASSOCIATED DEVELOPMENT
- CABLE INFRASTRUCTURE
- SUBSTATION, BESS AND ASSOCIATED INFRASTRUCTURE
- BIO DIVERSITY MITIGATION
- BIO DIVERSITY MITIGATION AND CABLE INFRASTRUCTURE
- RESERVE SITE ACCESS CORRIDOR IF SUBSEQUENTLY NEEDED
- SITE ACCESS CORRIDOR AND CABLE INFRASTRUCTURE
- ACCESS TO WEST BURTON POWER STATION
- ✱ PRIMARY ACCESS POINT
- ✱ INTERNAL SITE NODE



1	PL	PL	URS	2024-10-04	Final boundary and owners address
2	PL	URS	URS	2024-11-15	Site boundary and owners address
3	PL	URS	URS	2024-11-05	Final issue
ISSUE DRAWING		CHG	DATE	REVISION NOTES	
PURPOSE		PRELIMINARY		COORDINATES	
SCALE	1:2,500	DATUM	OSGB 1936		
LAYOUT DWG	N/A	LAYOUT NO.	N/A		
PROJECT TITLE					
STEEPLE SOLAR FARM					
DRAWING TITLE					
OPERATION PHASE INDICATIVE PARAMETERS PLAN					
RES DRAWING NUMBER					
04954-RES-LAY-DR-LE-025					
REV					
3					

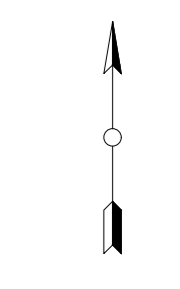


- ▬ SITE BOUNDARY (OUTSIDE EDGE OF LINE DENOTES BOUNDARY)
- AREA FOR SOLAR PANELS AND ASSOCIATED DEVELOPMENT
- CABLE INFRASTRUCTURE
- SUBSTATION, BESS AND ASSOCIATED INFRASTRUCTURE
- BIO DIVERSITY MITIGATION
- BIO DIVERSITY MITIGATION AND CABLE INFRASTRUCTURE
- RESERVE SITE ACCESS CORRIDOR IF SUBSEQUENTLY NEEDED
- SITE ACCESS CORRIDOR AND CABLE INFRASTRUCTURE
- ACCESS TO WEST BURTON POWER STATION
- ★ PRIMARY ACCESS POINT
- ★ INTERNAL SITE NODE



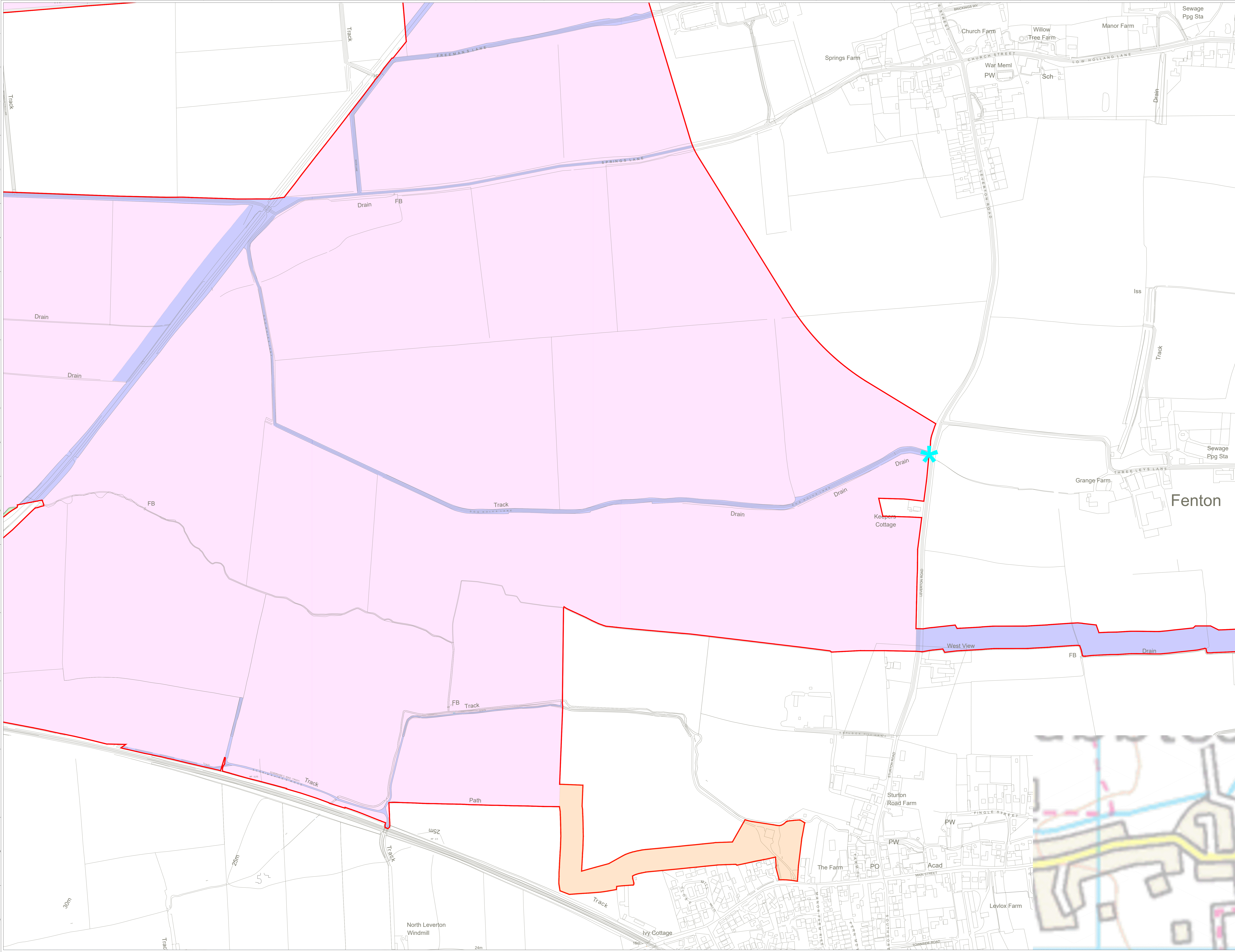
SITE LOCATION - NOT TO SCALE

SHEET 4 OF 7



1	FG	JR	MS	2024-10-04	Final design and boundary work
2	FG	JR	MS	2024-11-15	Site boundary and access update
3	FG	JR	MS	2024-11-05	Final issue
ISSUE DRAWING CHECK DATE DATE REVISION NOTES					
PURPOSE		PRELIMINARY	COORDINATES	OSGB 1936	
SCALE	1:2,500	@ AD	DATUM	N/A	
LAYOUT DWG	N/A	LAYOUT NO.	N/A		
PROJECT TITLE					
STEEPLE SOLAR FARM					
DRAWING TITLE					
OPERATION PHASE INDICATIVE PARAMETERS PLAN					
RES DRAWING NUMBER					
04954-RES-LAY-DR-LE-025					
REV 3					
THIS DRAWING IS THE PROPERTY OF RESOLVING ENERGY SYSTEMS LIMITED AND REPRODUCTION MAY BE MADE IN WHOLE OR IN PART WITHOUT PERMISSION					



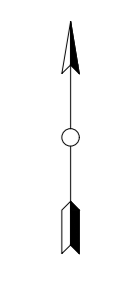


- ▬ SITE BOUNDARY (OUTSIDE EDGE OF LINE DENOTES BOUNDARY)
- ▭ AREA FOR SOLAR PANELS AND ASSOCIATED DEVELOPMENT
- ▬ CABLE INFRASTRUCTURE
- ▬▬▬ SUBSTATION, BESS AND ASSOCIATED INFRASTRUCTURE
- ▭ BIO DIVERSITY MITIGATION
- ▬▬▬ BIO DIVERSITY MITIGATION AND CABLE INFRASTRUCTURE
- ▭ RESERVE SITE ACCESS CORRIDOR IF SUBSEQUENTLY NEEDED
- ▬▬▬ SITE ACCESS CORRIDOR AND CABLE INFRASTRUCTURE
- ▭ ACCESS TO WEST BURTON POWER STATION
- ★ PRIMARY ACCESS POINT
- ★ INTERNAL SITE NODE



SITE LOCATION - NOT TO SCALE

SHEET 5 OF 7



REV	DATE	DESCRIPTION
1	2024-10-04	Final design and approval
2	2024-11-15	Site boundary and access update
3	2024-11-15	Final issue

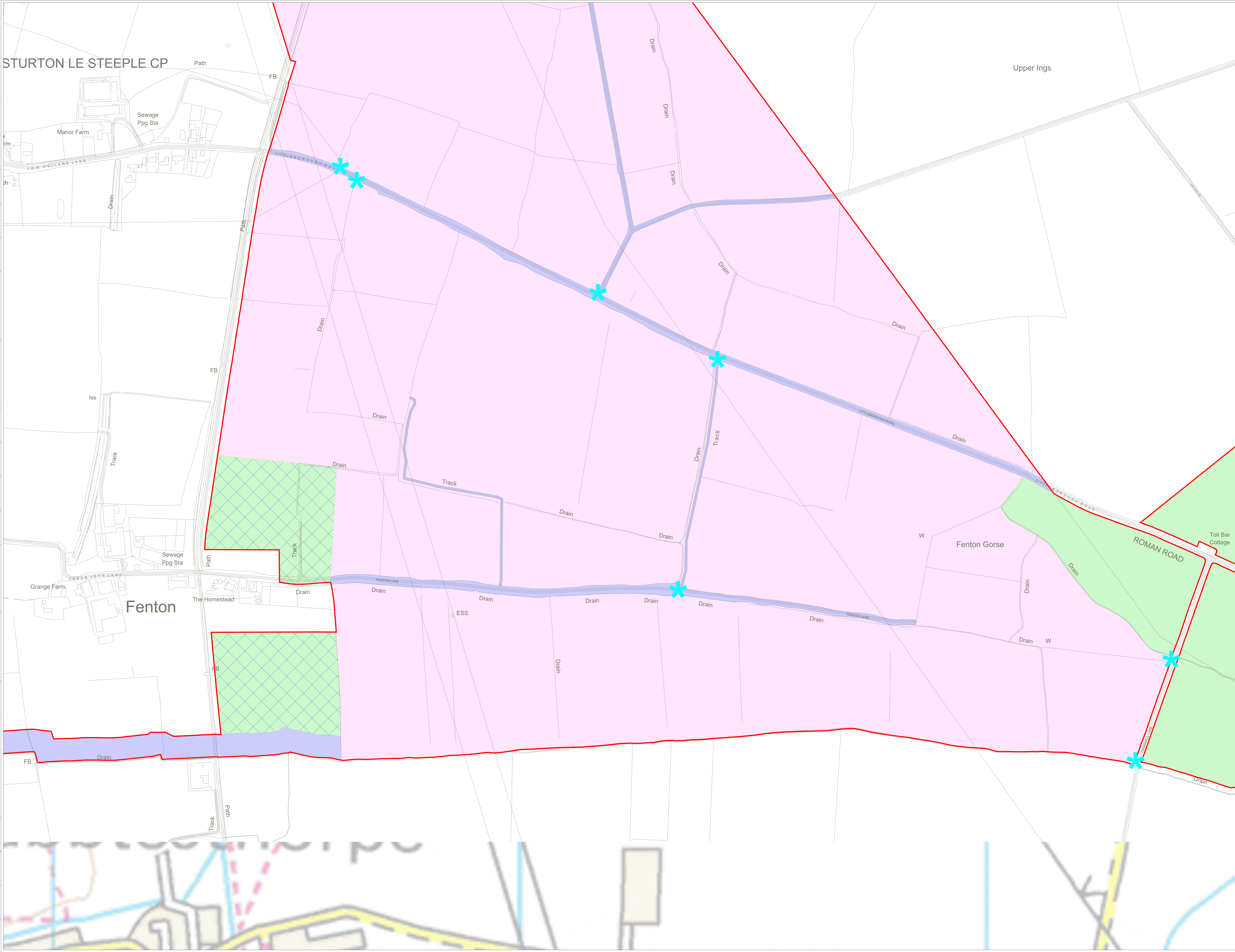
ISSUE	DATE	DESCRIPTION
1	2024-10-04	Final design and approval
2	2024-11-15	Site boundary and access update
3	2024-11-15	Final issue

PURPOSE	PRELIMINARY	COORDINATES	OSGB 1936
SCALE	1:2,500	DATUM	N/A
LAYOUT DWG	N/A	LAYOUT NO.	N/A
PROJECT TITLE	STEEPLE SOLAR FARM		
DRAWING TITLE	OPERATION PHASE INDICATIVE PARAMETERS PLAN		
RES DRAWING NUMBER	04954-RES-LAY-DR-LE-025	REV	3

THIS DRAWING IS THE PROPERTY OF RES GROUP LIMITED. UNLESS OTHERWISE STATED, REPRODUCTION IN WHOLE OR IN PART WITHOUT PERMISSION.



- SITE BOUNDARY (OUTSIDE EDGE OF LINE DEVIOTES BOUNDARY)
- AREA FOR SOLAR PANELS AND ASSOCIATED DEVELOPMENT
- CABLE INFRASTRUCTURE
- SUBSTATION, BESS AND ASSOCIATED INFRASTRUCTURE
- BIO DIVERSITY MITIGATION AND CABLE INFRASTRUCTURE
- RESERVE SITE ACCESS CORRIDOR IF SUBSEQUENTLY NEEDED
- SITE ACCESS CORRIDOR AND CABLE INFRASTRUCTURE
- ACCESS TO WEST BURTON POWER STATION
- * PRIMARY ACCESS POINT
- * INTERNAL SITE NODE



STURTON LE STEEPLE CP

Upper Ings

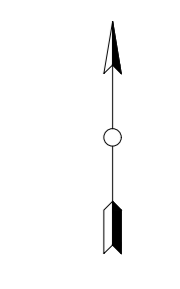
Fenton

Fenton Gorse

ROMAN ROAD

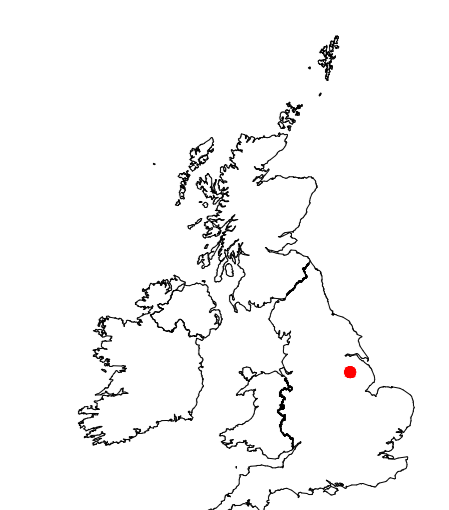
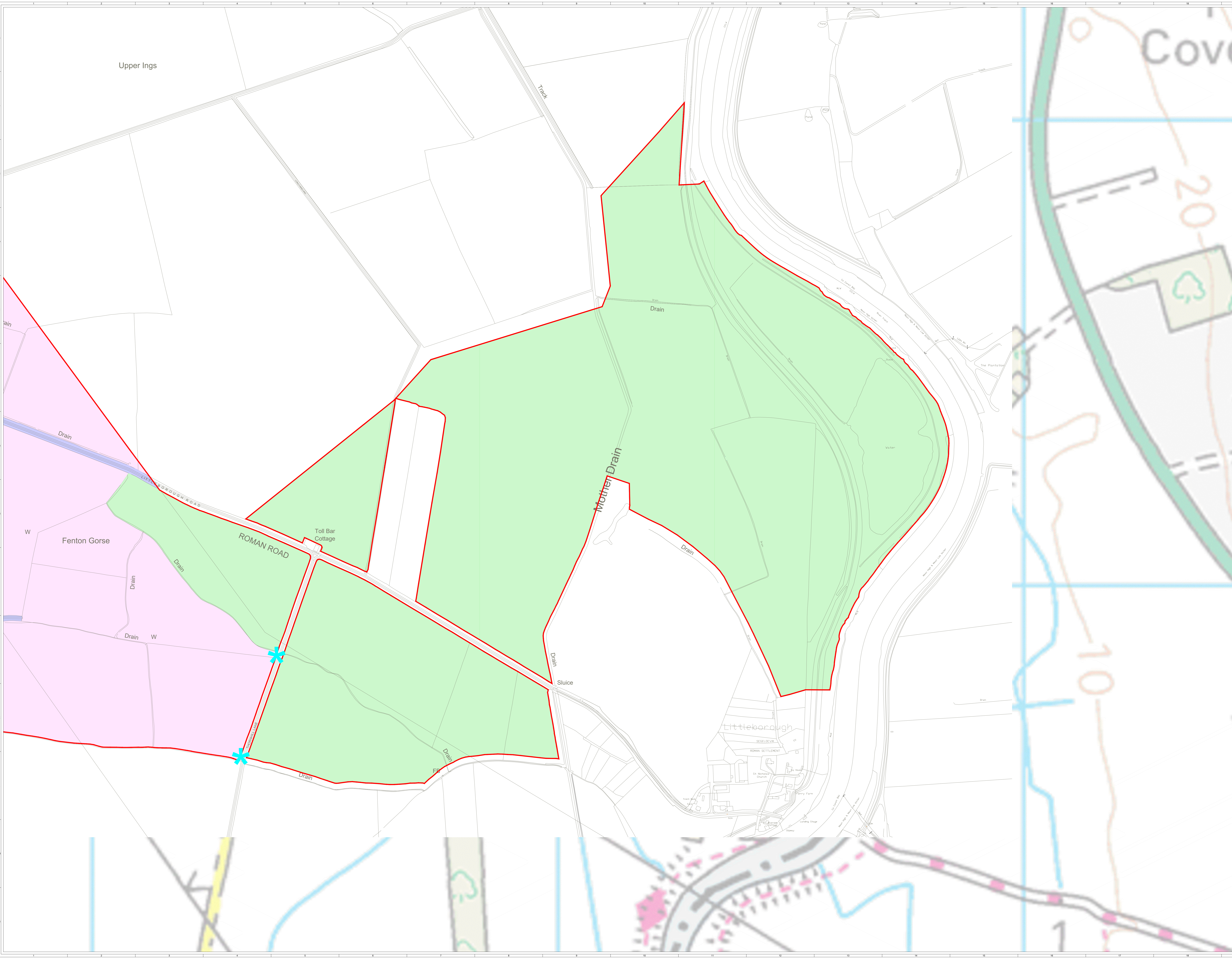


SHEET 6 OF 7



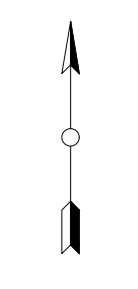
1	JG	JH	JH	JH	2024-10-04	Boundary and access	Boundary and access
2	JG	JH	JH	JH	2024-11-15	Site boundary and access	Access
3	JG	JH	JH	JH	2024-11-15	Final	Final
ISSUE: DRAWING: CHG2: 2024: 11:15: DATE: REVISIONS: NOTES:							
PURPOSE: PRELIMINARY				COORDINATES: OSGB 1936			
SCALE: 1:2,500		@ AD		DATUM: N/A		N/A	
LAYOUT: N/A		LAYOUT: N/A		LAYOUT: N/A		LAYOUT: N/A	
PROJECT TITLE: STEEPLE SOLAR FARM							
DRAWING TITLE: OPERATION PHASE INDICATIVE PARAMETERS PLAN							
RES DRAWING NUMBER: 04954-RES-LAY-DR-LE-025							REV: 3
THIS DRAWING IS THE PROPERTY OF RES GROUP LIMITED AND NO REPRODUCTION MAY BE MADE IN WHOLE OR IN PART WITHOUT PERMISSION.							
				RES GROUP COURT, EGG FARM LANE, HAGLEY, WOLVERHAMPTON, WEST MICHES, TEL: +44 (0) 192 280000 WWW.RES-GROUP.COM			

- ▬ SITE BOUNDARY (OUTSIDE EDGE OF LINE DEVIATES BOUNDARY)
- AREA FOR SOLAR PANELS AND ASSOCIATED DEVELOPMENT
- CABLE INFRASTRUCTURE
- SUBSTATION, BESS AND ASSOCIATED INFRASTRUCTURE
- BIO DIVERSITY MITIGATION
- BIO DIVERSITY MITIGATION AND CABLE INFRASTRUCTURE
- RESERVE SITE ACCESS CORRIDOR IF SUBSEQUENTLY NEEDED
- SITE ACCESS CORRIDOR AND CABLE INFRASTRUCTURE
- ACCESS TO WEST BURTON POWER STATION
- ★ PRIMARY ACCESS POINT
- ★ INTERNAL SITE NODE



SITE LOCATION - NOT TO SCALE

SHEET 7 OF 7



1	1	1	1	2024-10-04	Final design and construction
2	1	1	1	2024-11-15	Site boundary and access roads
3	1	1	1	2024-11-05	Final issue
ISSUE	DATE	BY	DATE	REVISIONS	NOTES
PURPOSE: PRELIMINARY OSGB 1936					
SCALE:	1:2,500	@ A0	DATUM:	N/A	
LAYOUT DWG:	N/A	LAYOUT NO:	N/A		
PROJECT TITLE: STEEPLE SOLAR FARM					
DRAWING TITLE: OPERATION PHASE INDICATIVE PARAMETERS PLAN					
RES DRAWING NUMBER:	04954-RES-LAY-DR-LE-025				REV: 3
THIS DRAWING IS THE PROPERTY OF RES GROUP LIMITED. NO REPRODUCTION MAY BE MADE IN WHOLE OR IN PART WITHOUT PERMISSION.					

